

Rhonda Whiting
Chair
Montana

Bruce A. Measure
Montana

James A. Yost
Idaho

W. Bill Booth
Idaho



Bill Bradbury
Vice-Chair
Oregon

Henry Lorenzen
Oregon

Tom Karier
Washington

Phil Rockefeller
Washington

November 27, 2012

MEMORANDUM

TO: Fish and Wildlife Committee

FROM: Council Member Rockefeller

SUBJECT: Update on the PNWER Winter Meeting

The Pacific Northwest Economic Region (PNWER) is a public-private partnership of the states, provinces and territories of the Northwest United States and Western Canada. November 14th – 17th PNWER held their Winter Meeting in Coeur d'Alene. More than 100 legislators were in attendance during the week to discuss key issues regarding the regional economy, including sessions on energy and invasive species.

Member Rockefeller and Member Booth attended the meeting and participated in a regional discussion of zebra and quagga mussel prevention efforts. Member Rockefeller will give a brief overview of the panel presentation and potential action items resulting from the meeting such as:

1. Coordination of a regional meeting of potential stakeholders whose assets are put at risk if mussels colonize the Basin.
2. Creation of a regional team of state and provincial reps associated with prevention/detection/decontamination to develop agreed protocols that could be adopted and followed by the four Northwest states and BC.

Please find attached a copy of the presentation given by Member Rockefeller, Representative Eric Anderson of Idaho, Amy Ferriter of Idaho Department of Agriculture and Gail Wallin of the Invasive Species Council of BC.

Zebra and Quagga Mussels A Threat to Our Region

Representative Eric Anderson, Idaho, PNWER Invasive Species Workgroup Chair

Amy Ferriter, Invasive Species Coordinator, ISDA

Council Member Phil Rockefeller, NW Power & Conservation Council

Gail Wallin, Executive Director, Invasive Species Council of British Columbia

Mark Systma, Portland State University; PNWER Invasive Species Workgroup Chair

Megan Levy, Invasive Species Workgroup Coordinator, PNWER





The
Columbia
River Basin
and the
Pacific
Northwest
are at great
risk.

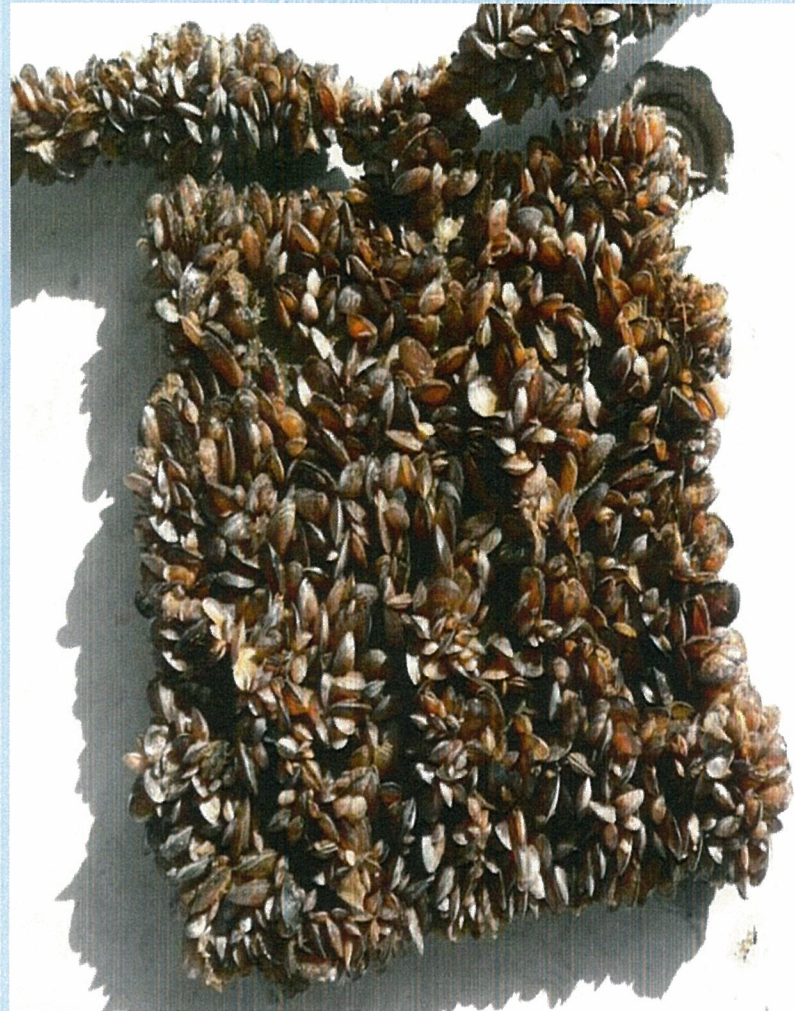


U.S.-Canada Zebra/Quagga Distribution 1989-2012

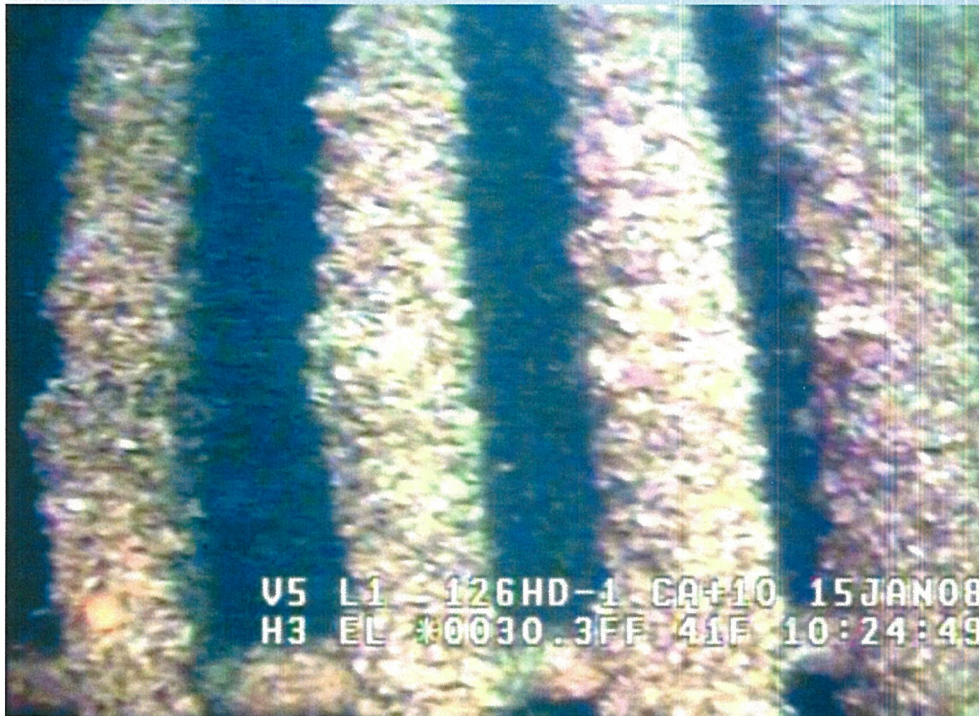


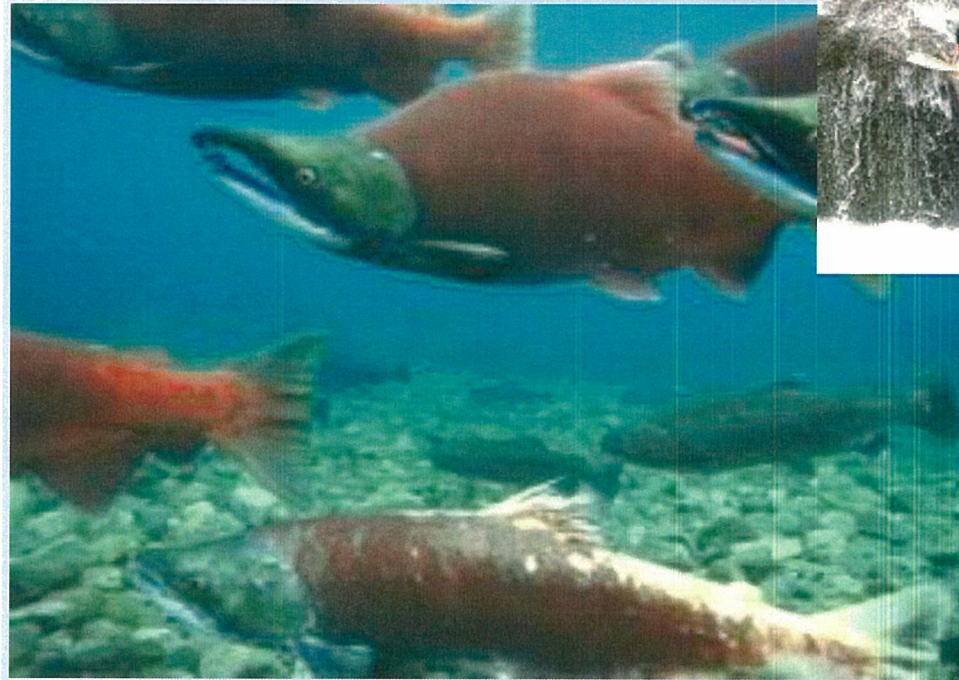
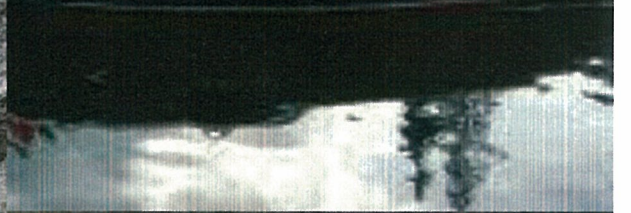
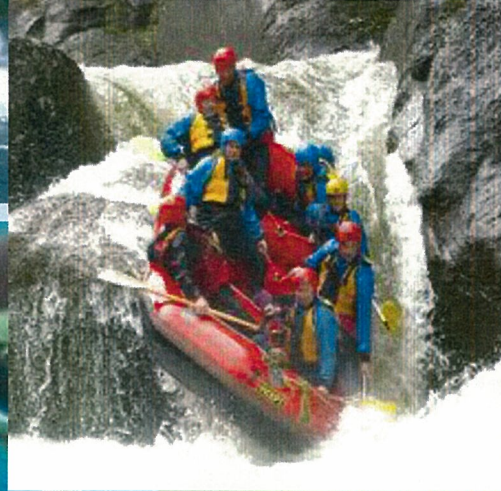
Parker Dam

Plates were in the water for 6 weeks



Parker Dam – February 2008

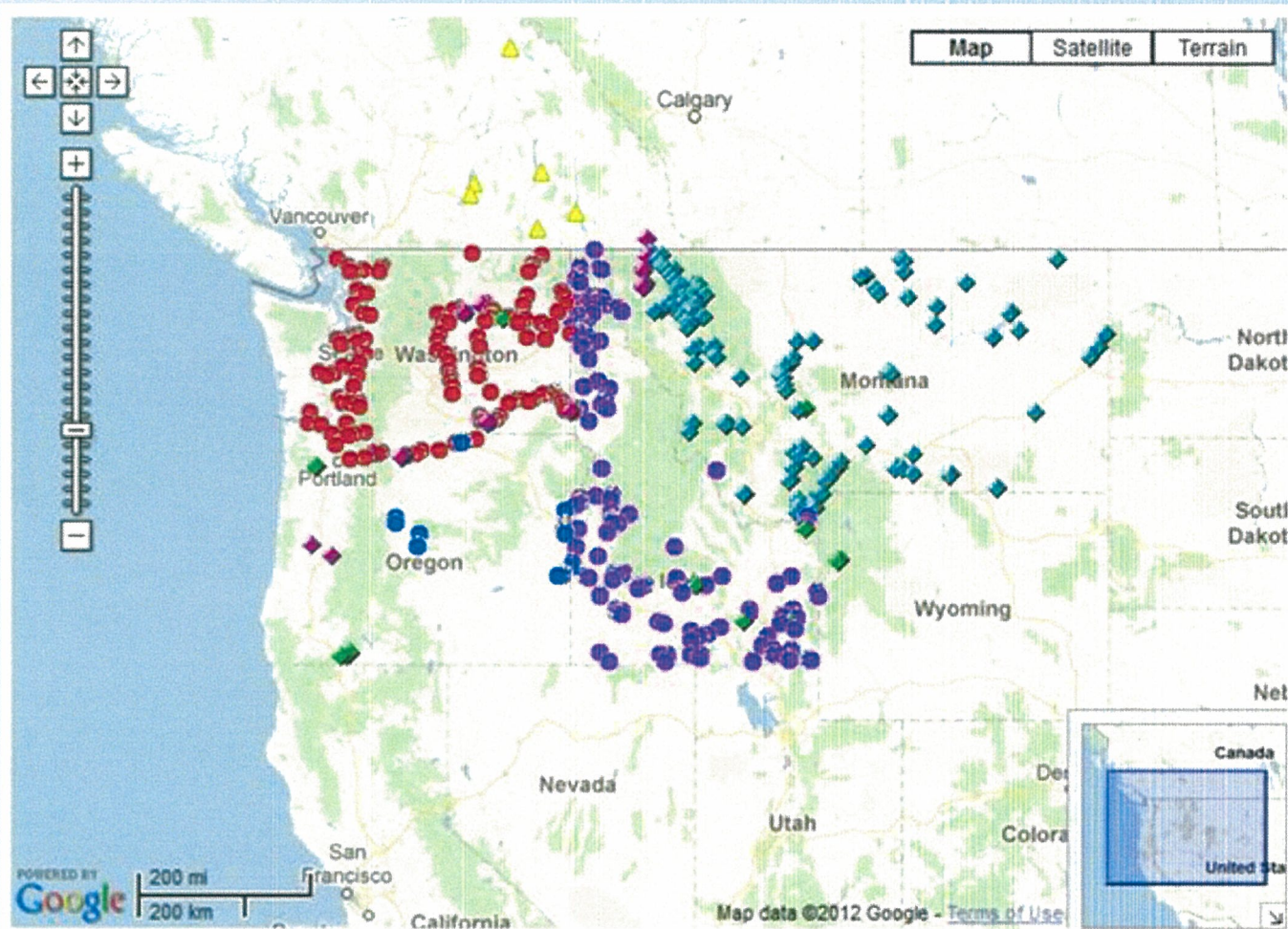




PNWER is the last uninfested region of North America.



Monitoring



Contributing Agencies

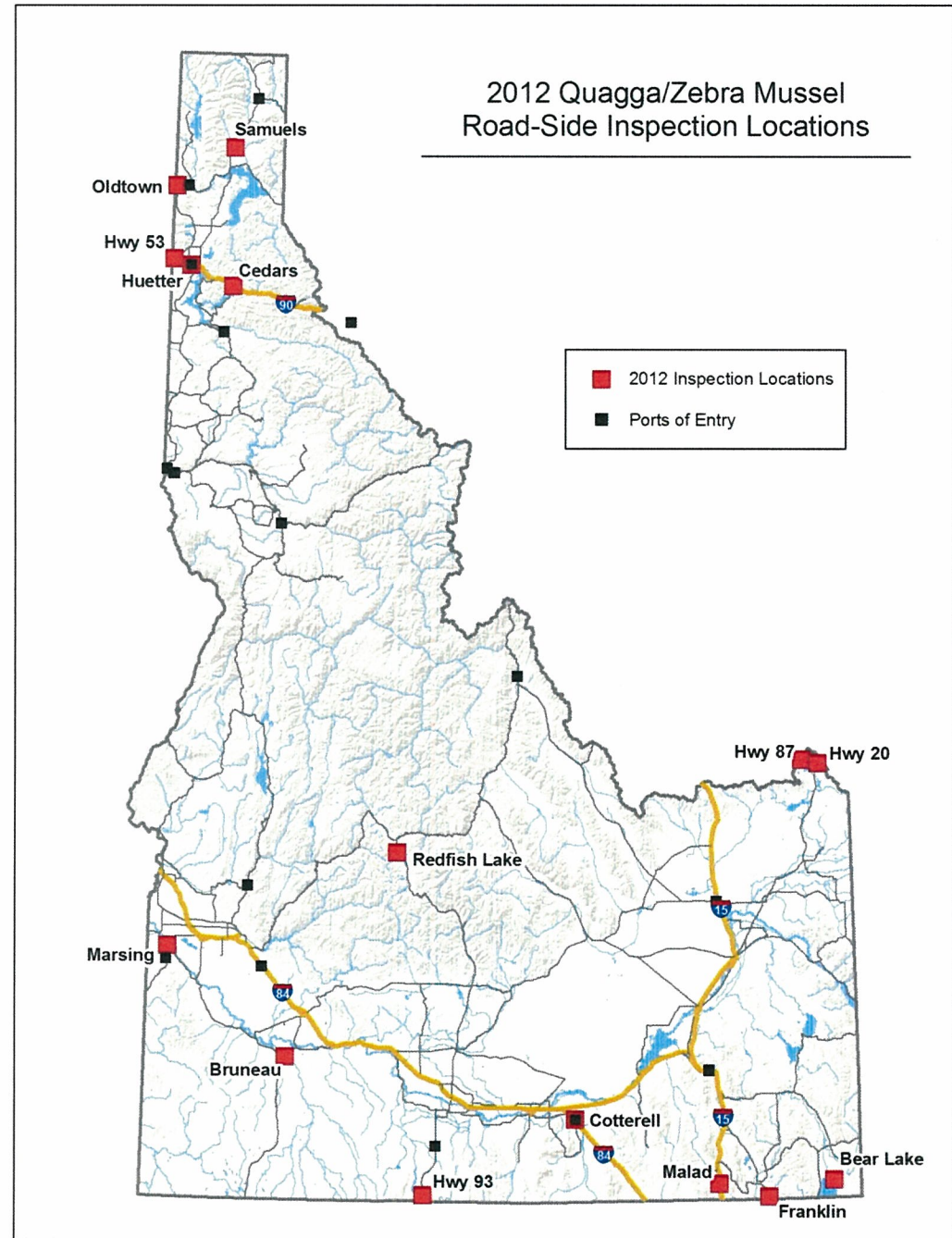
- ◆ BOR = Bureau of Reclamation
- IDA = Idaho Department of Agriculture
- PSU = Portland State University
- ◆ USACE = U.S. Army Corps of Engineers
- ◆ USGS = U.S. Geological Survey
- WDFW = Washington Department of Fish and Wildlife
- ◆ MFWP = Montana Fish, Wildlife, and Parks
- ▲ BCME = British Columbia Ministry of the Environment
- ODFW = Oregon Department of Fish and Wildlife



Pacific Northwest - Prevention

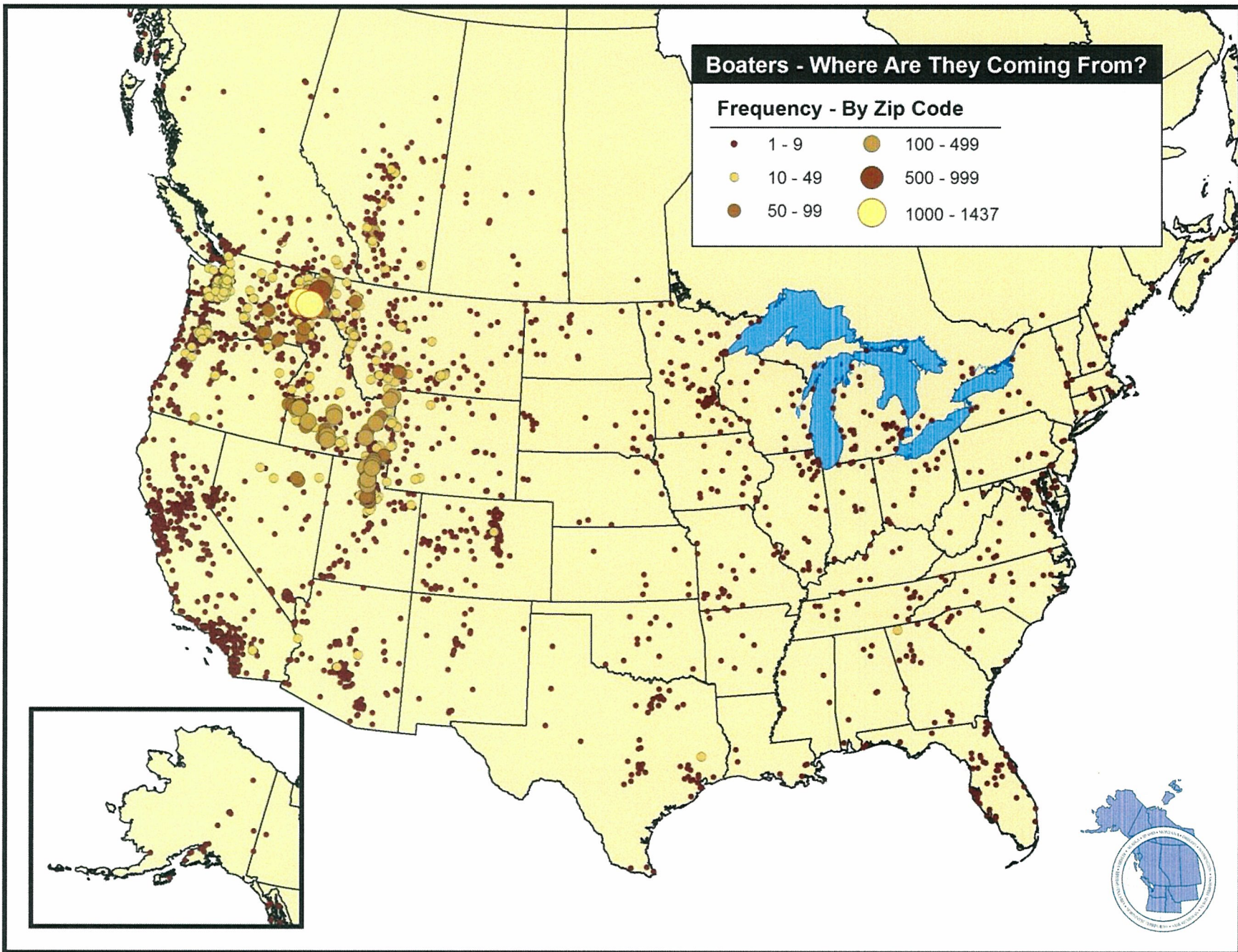
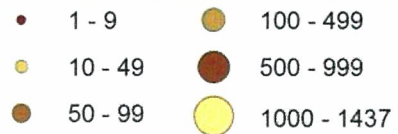


- Idaho:
15 Agriculture inspection stations at the state line that operate seasonally
- + 11 Ports of Entry (POEs) also inspect commercially hauled watercraft year round.

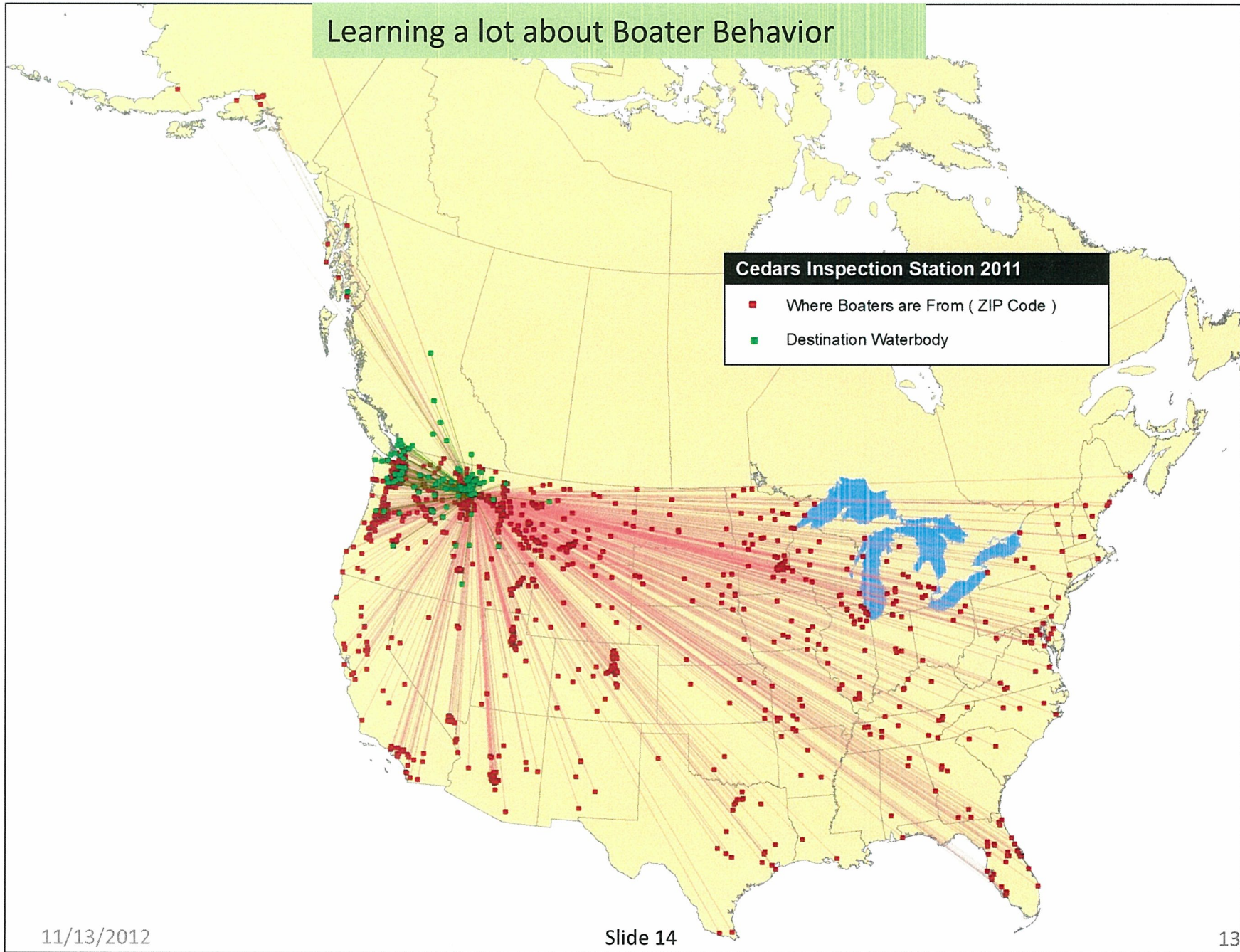


Boaters - Where Are They Coming From?

Frequency - By Zip Code



Learning a lot about Boater Behavior



Idaho's Invasive Species Passport

00504



INVASIVESPECIES.IDAHO.CO
1-877-336-8676

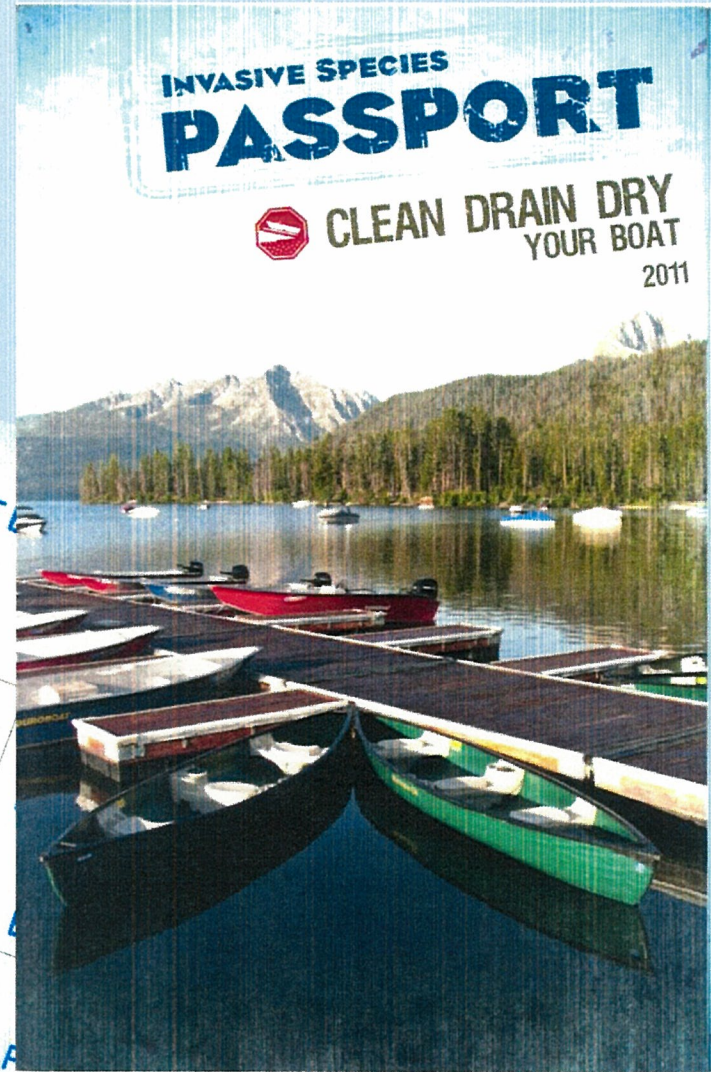
INSPECTED
APR 02 2011
BRUNEAU

INSPECTED
MAY 15 2011
SAMUELS

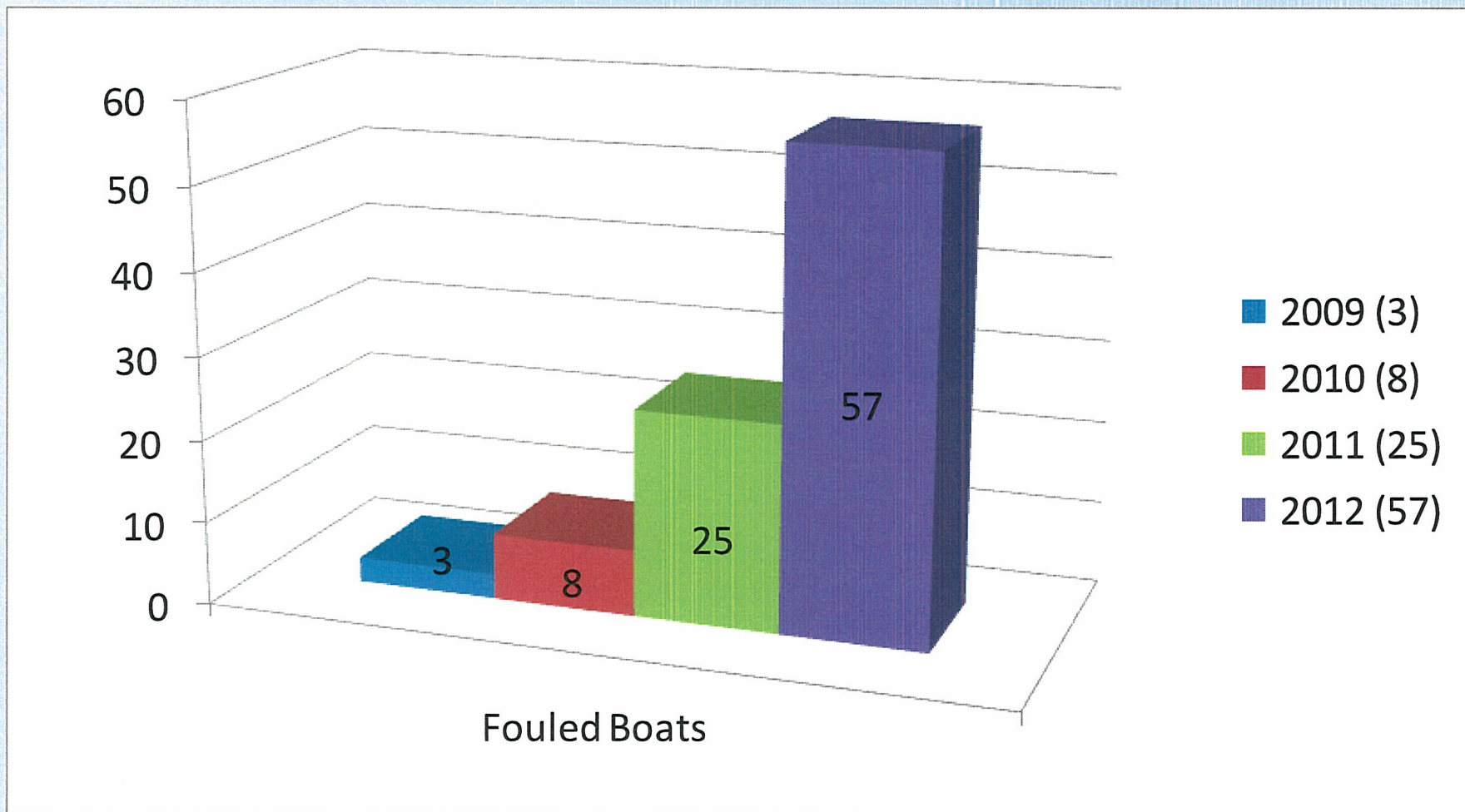
INSPECTED
MAY 27 2011
HENRY'S LAKE #1

INSPECTED
MAY 27 2011
HENRY'S LAKE #2

INSPECTED
JUL 01 2011
RED FISH

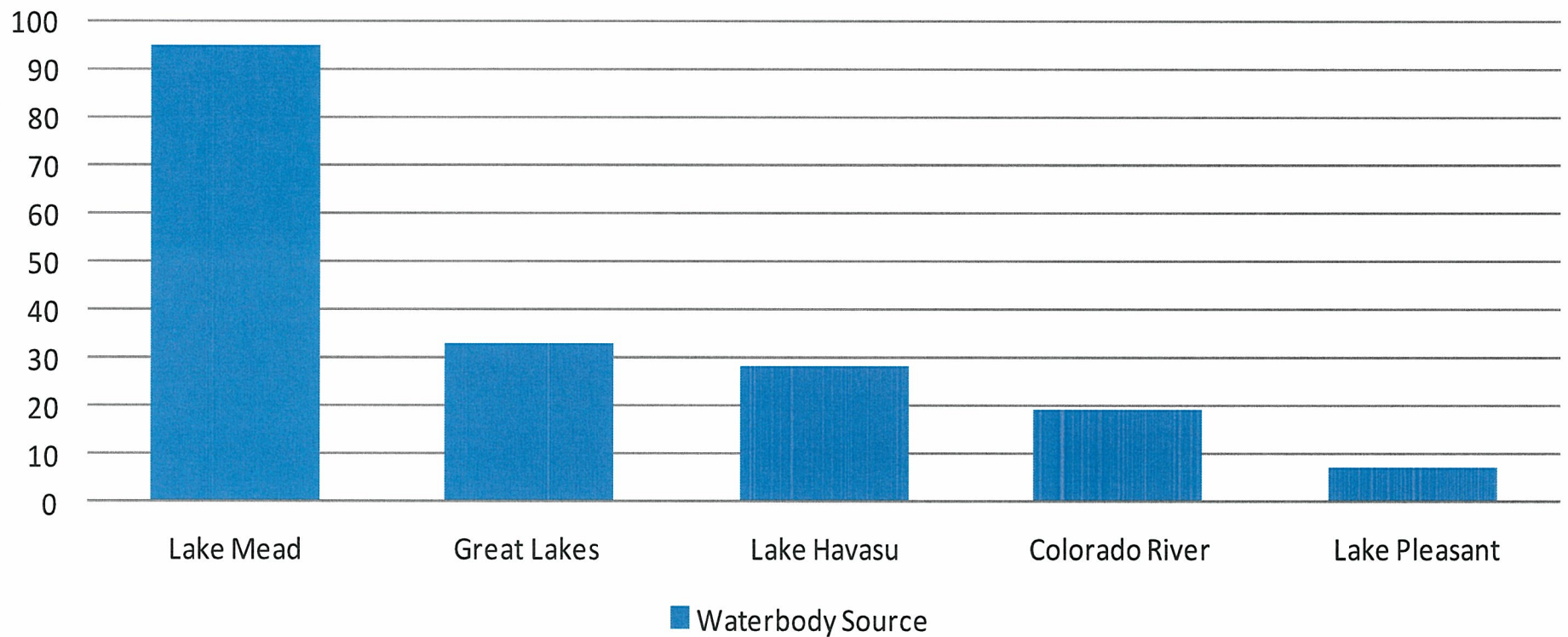


93 mussel-fouled boats intercepted in Idaho to date



Intercepted Contaminated Watercraft by Source (through July 2012)

For states of CA,OR, ID, MT, WA, WY, UT, CO
N= 200





*Invasive Species Council
of British Columbia*

Invasive Species Council of BC

**2012 Economic Leadership
Forum November 14-17, 2012**

Coeur d'Alene, Idaho

Photo: D Petryshen



*Invasive Species Council
of British Columbia*

Bringing Parties Together ... changing behaviours!

- Local/Regional governments
- Provincial and Federal governments
- Local weed/species committees
- First Nations
- Non-governmental
- Industry (forestry, utilities, mining, agriculture)





*Invasive Species Council
of British Columbia*

Rapid Response...

working together

**July 5th, 2012 Quagga
Mussels confirmed on a boat
in interior lake of BC**

- Idaho Alert to BC
- BC Government responds
- Federal government involved
 - ISCBC assisted



**BRITISH
COLUMBIA**

Ministry of Environment

Ministry of Forests, Lands and
Natural Resource Operations



Fisheries and Oceans
Canada

Pêches et Océans
Canada



*Invasive Species Council
of British Columbia*

July 7th: Key partners from across
Pacific Northwest Economic Region
helped guide decontamination

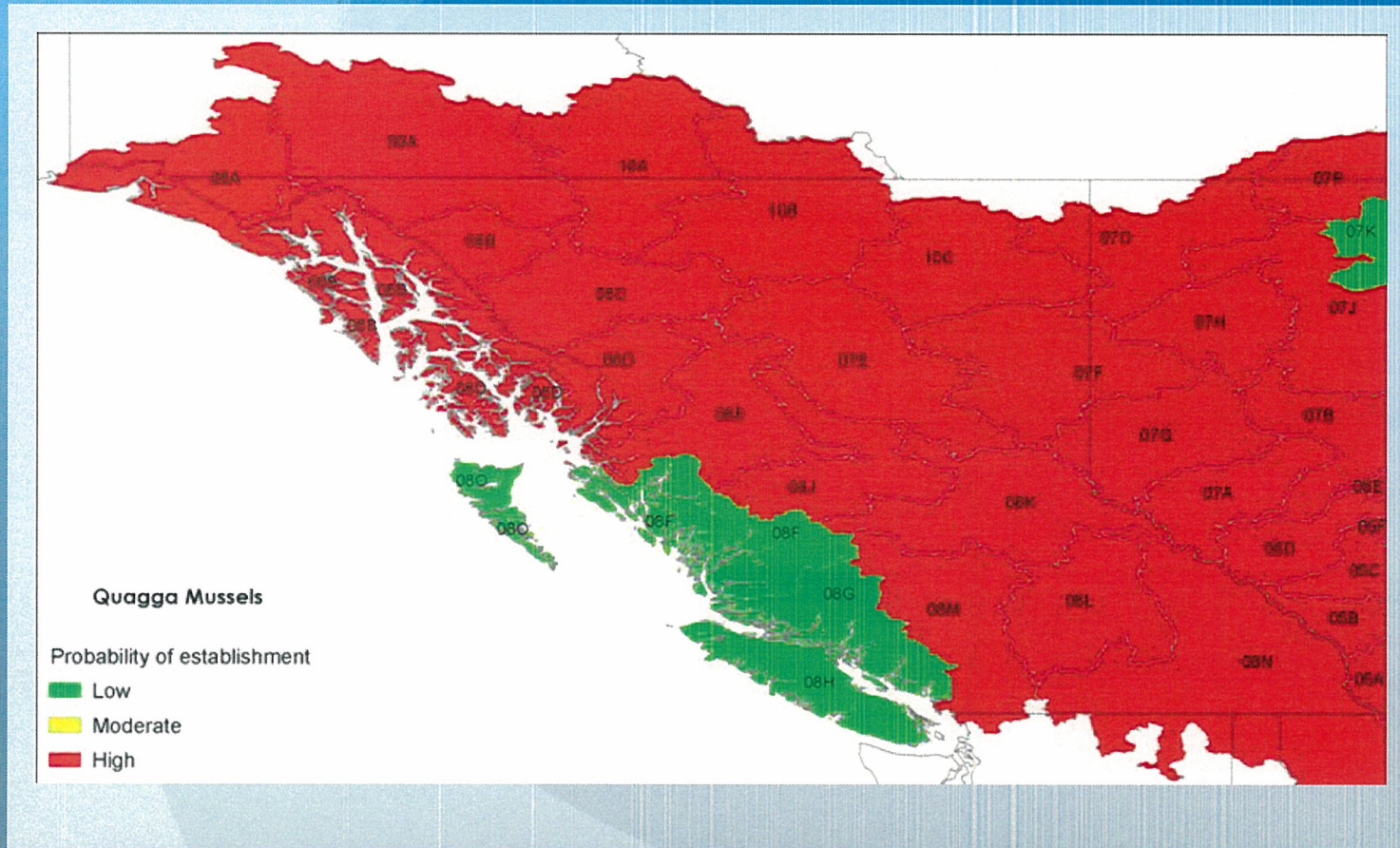


Sat.: Washington, Idaho, Oregon
Sun: Travel and equipment in place



*Invasive Species Council
of British Columbia*

Quagga Mussel Risk of Establishment





*Invasive Species Council
of British Columbia*

ISCBC: Clean, Drain, Dry

- Boater survey
- Boat inspection
- Boater commitment
- Boater prompts





*Invasive Species Council
of British Columbia*

Pending Next Steps

STOP Aquatic Invasive Species!

HERE'S HOW...

INSPECT your boats, trailers, and recreational or fishing gear.

CLEAN, DRAIN & DRY all water, mud, plants and animals.

NEVER transport water, bait, fish or aquatic plants & animals.

NEVER dispose of or release aquarium, food market or exotic plants & animals into lakes, rivers and wetlands.

Aquatic Invasive Species threaten Canadian waters
Prevention is the best defence!

FOR INFORMATION ON AQUATIC INVASIVE SPECIES
visit www.pfi-mmpc.gc.ca

INSPECT CLEAN DRAIN & DRY

INSPECTEZ NETTOYEZ VIDEZ & SÉCHEZ

ARRÊTEZ les espèces aquatiques envahissantes!

VOICI COMMENT...

INSPECTEZ vos bateaux, remorques et engins de pêche récréative.

NETTOYEZ, VIDEZ & SÉCHEZ toute l'eau, la boue, les plantes et les animaux.

NE JAMAIS transporter d'eau, d'appâts, de poissons ou de plantes et d'animaux aquatiques.

NE JAMAIS jeter de plantes ni d'animaux exotiques d'aquarium ou du marché d'alimentation dans les lacs, les rivières et milieux humides.

Les espèces aquatiques envahissantes menacent les eaux du Canada
La prévention est la meilleure défense!

POUR DE PLUS AMPLES RENSEIGNEMENTS SUR LES ESPÈCES AQUATIQUES ENVAHISSANTES, visitez www.pfi-mmpc.gc.ca

Fisheries and Oceans Canada / Pêches et Océans Canada
Canada Border Services Agency / Agence des services frontaliers du Canada
Canada

Water Samples

Alive or dead?

New Regulations:
Controlled Alien
Species Regulation (BC)

Aquatic Invasive
Species Regulation
(Fisheries Act)

Other Actions:

- Signage at Canadian Borders??
- Training for Border staff- what to look for??
- Voluntary/mandatory boat inspections??



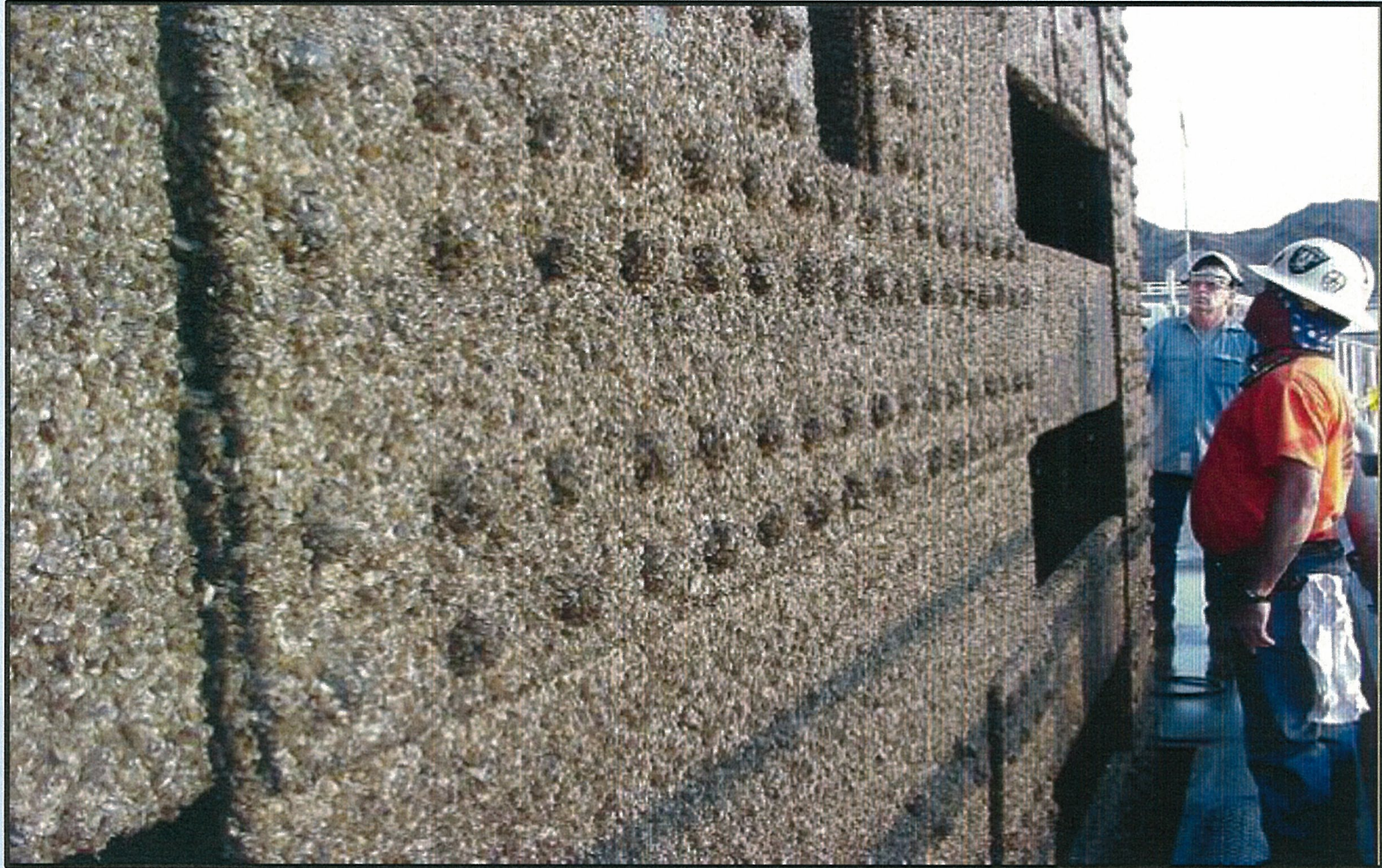
*Invasive Species Council
of British Columbia*

Next Step! Collaboration and Coordination

- Border inspection or controlling
- Collaboration across PNWER for early alerts
- BC Response capability
- BC/Alberta joint partnership on prevention and outreach



Threat to the Region



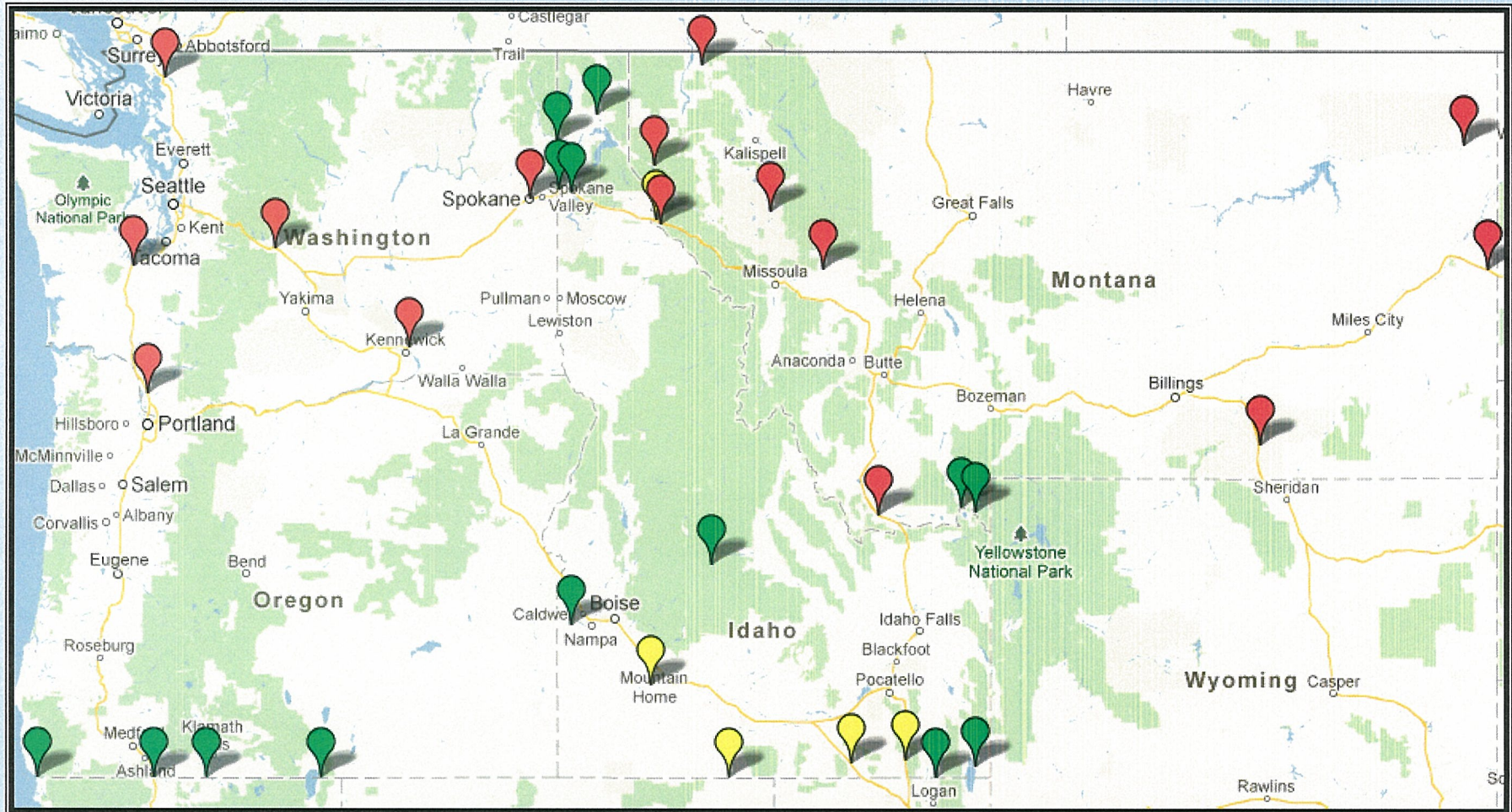
Potential Costs of Invasive Mussels in the Columbia River Basin

Type of Cost	Estimated Cost Per Year
Hydropower main cooling system, trashracks, intakes, other water supply	\$16 M FCRPS plus \$5 M others
Hydropower spillway gates, piers, apron, stilling basins	\$3 M to \$10 M, FCRPS
Hatchery water supply	\$3 M for 20 facilities
Costs to other facilities/property, especially water supply, including navigation, waterfront, boats and marinas	tens to hundreds of millions
Fish passage facilities, bypass screens, fish ladders, gatewells	\$1.95 M screens, \$1.1 M ladders, \$1.0 M gatewells

* 2010 IEAB report *The Economic Risk Associated with the Potential Establishment of Zebra and Quagga Mussels in the Columbia River Basin*



Regional Coordination



Gaps and Needs

- U.S. Lacey Act and Other Relevant Regulations.
- Consistency Among State and Provincial Inspection Programs (i.e. a PNW Passport System).
- Address High Risk “Point Source” Waters.



THANK YOU!

Representative Eric Anderson, Idaho, PNWER Invasive Species Workgroup Chair

Amy Ferriter, Invasive Species Coordinator, ISDA

Council Member Phil Rockefeller, NW Power & Conservation Council

Gail Wallin, Executive Director, Invasive Species Council of British Columbia

Mark Systma, Portland State University; PNWER Invasive Species Workgroup Chair

Megan Levy, Invasive Species Workgroup Coordinator, PNWER

