

Joan M. Dukes
Chair
Oregon

Bruce A. Measure
Montana

James A. Yost
Idaho

W. Bill Booth
Idaho



Rhonda Whiting
Vice-Chair
Montana

Bill Bradbury
Oregon

Tom Karier
Washington

Phil Rockefeller
Washington

June 27, 2012

MEMORANDUM

TO: Council Members

FROM: Jeff Allen, Idaho Policy Analyst

SUBJECT: Upper Salmon Basin Watershed Program

2012 marks the 20th Anniversary of the Upper Salmon Basin Watershed Program. Officially designated as the Lemhi River Model Watershed Program in June of 1992, its establishment closely followed the listing of Snake River Spring/Summer Run Chinook Salmon as Threatened under the Endangered Species Act in April of that same year. Several years before the Model Watershed Program, Lemhi ranchers had already organized and began to develop a salmon restoration plan. Irrigators hoped that they could head off future federal mandates by being proactive and developing a subbasin plan to enhance fish passage. The fledgling Watershed Program harnessed the energy of these ongoing efforts in the Lemhi and expanded the geographic scope of the restoration to include the Pahsimeroi and East Fork Salmon River Basins. Later, the entire Upper Salmon River Basin was included and the name was eventually changed to the Upper Salmon Basin Watershed Program.

With funding from the Bonneville Power Administration and support from area irrigators and numerous state and federal agencies, the program became a nationally recognized model for community-inspired collaboration. In 2003, the Watershed Program received The Conservation Project of the Year Award from the Bureau of Land Management and the U.S. Forest Service. Although the work that was started is not finished, we continue to honor the commitment that we made two decades ago to provide service to the community and to the resource.

w:\kc\ww\july 2012.docx



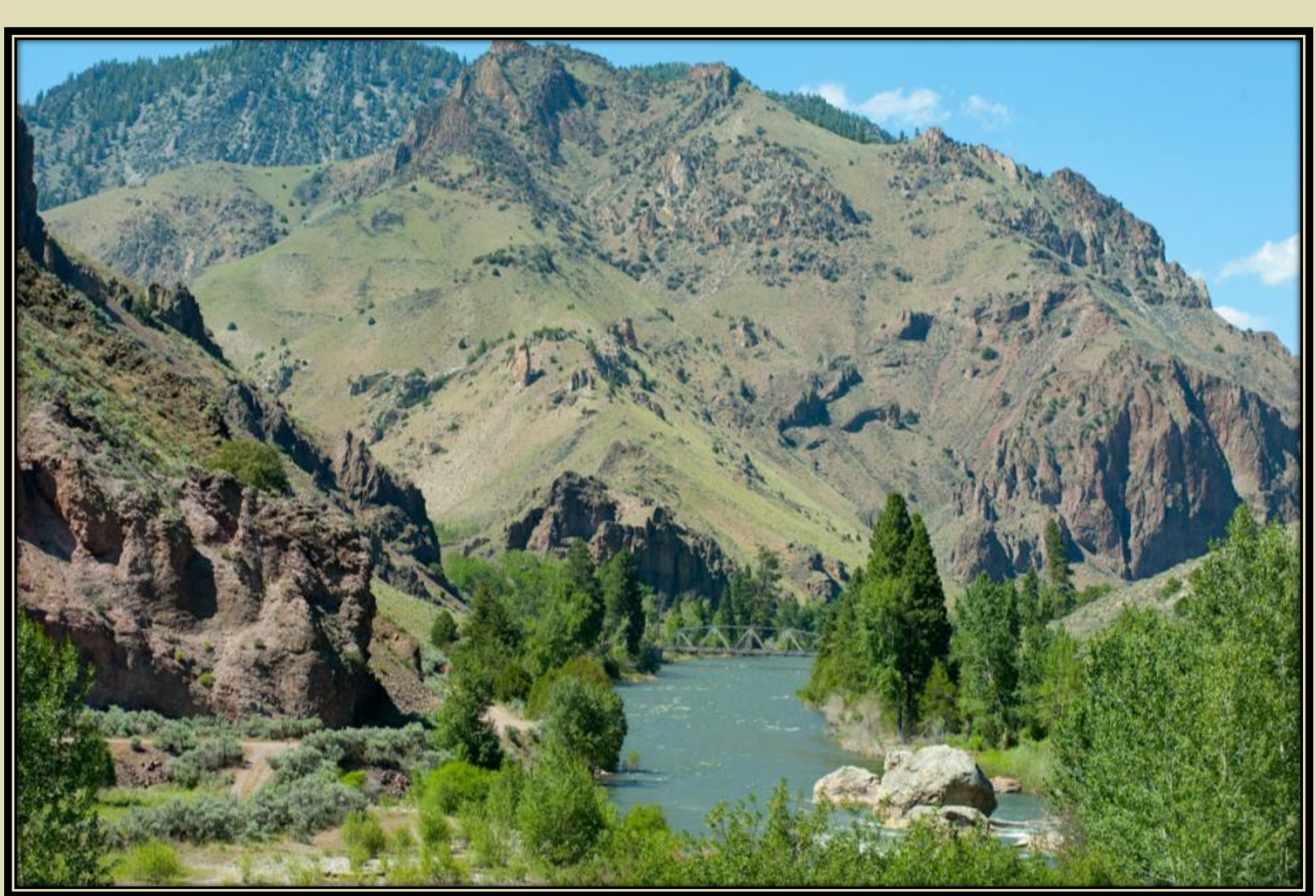
MISSION

Protect and restore the region's significant fish habitats through a partnership approach that respects agriculture and improves our way of life.

Homegrown, Common-Sense Conservation



*From the Mouth of the Middle Fork to the Headwaters of the
Salmon River*



Salmon River – Rattlesnake Creek

Who We Are

- Founded in 1992 under the Northwest Power and Conservation Council's Columbia River Basin Fish and Wildlife Program
- Landowners + local, state, federal partners
- Administered by the Idaho Governor's Office of Species Conservation



Homegrown, Common-Sense Conservation

USBWP Advisory Committee

*Provide oversight, guidance and direction to the Watershed Program.
A forum for multiple interests to communicate and collaborate.*

V. Don Olson, Chairman and Lemhi Rancher

Bruce Mulkey, Lemhi Rancher

Tom Curet, Idaho Department of Fish and Game

Kristin Troy, Idaho Adventures (Recreation)

Jude Trapani, Bureau of Land Management

Shannon Williams, Lemhi County Extension Agent

Mark Olson, Natural Resources Conservation Service

Sarah Baker, Custer County Extension Agent

Mark Davidson, The Nature Conservancy

Trish Downton, Custer County landowner

Kevin Hoffman Chairman, Lemhi Soil and Water Conservation District



Homegrown, Common-Sense Conservation

USBWP Technical Team



Objectives:

- Propose, evaluate and rank projects for biological merit
- Provide guidance regarding planning, funding and implementation
- Coordinate with USBWP Advisory Committee

Cooperation and Partnership Based on Trust

- Develop restoration projects w/ landowners
- Seek + manage major funding
- Assist with environmental compliance
- Construction oversight
- Report outcomes



Tech Team Tour Big Timber Creek

Salmon, Idaho





Community Based Conservation

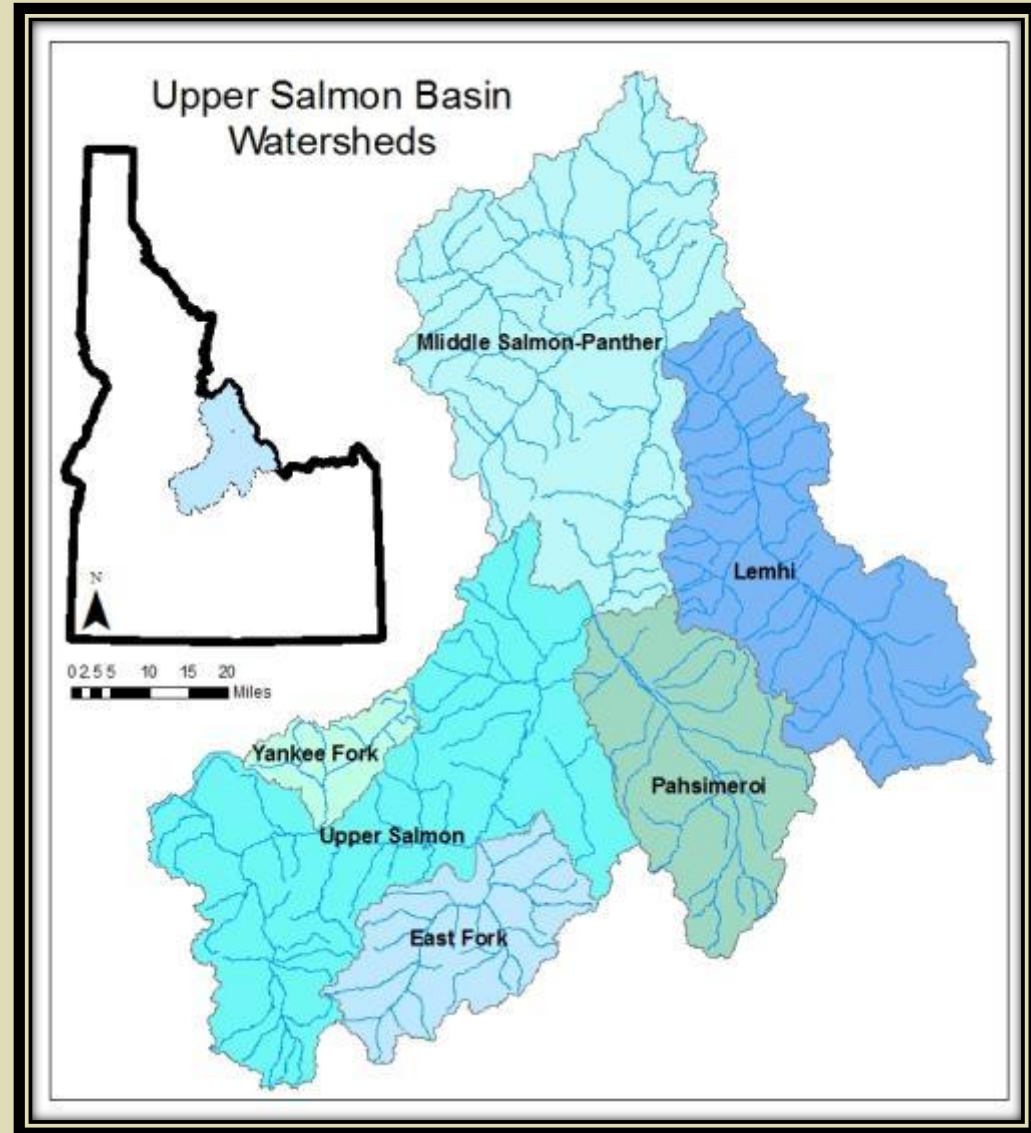


"I think what we've done was good for the river, good for the fish and good for us." -Dick Baker, Sr.

Upper Salmon Basin Watersheds

Subbasins:

- **Upper Salmon** (1,547,982)
 - East Fork (353,340)
 - Yankee Fork (121,600)
- **Middle Salmon-Panther** (1,163,102)
- **Lemhi** (803,204)
- **Pahsimeroi** (528,973)
- **4 ½ Million Acres**



A Healthier, More Resilient Watershed

- Riparian habitat restoration
- Instream habitat improvement
- Fish-migration barrier removal
- Instream flow enhancement
- Irrigation diversion fish-screening



East Fork Salmon River



*“It’s been a great thing for us, a great thing for everyone. There was a rightness to the deal.”
-Glenn Elzinga*



“Landowners get tunnel vision sometimes, like biologists do. We can’t see anything but cows, and biologists can’t see anything but fish. In this relationship, we’ve had to teach one another.”

Bruce Mulkey, Lemhi Rancher & Founding Member USBWP Advisory Committee



Protect the Best, Restore the Rest

Upper Lemhi River: 8 mile corridor fence, installed 1998



East Fork Salmon River
Riparian Fencing
2000



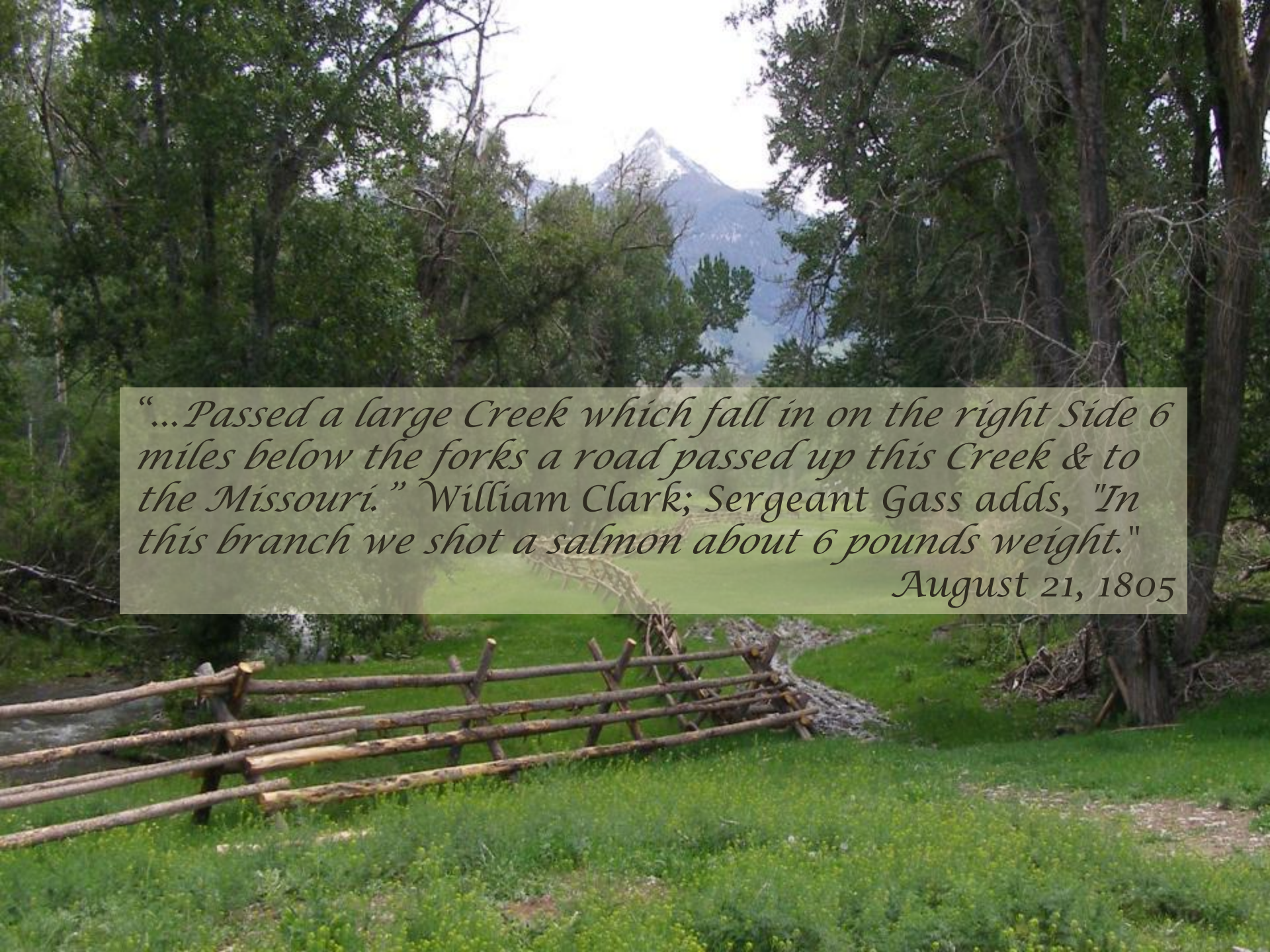
East Fork Salmon River
Riparian Fencing
2009

Wallace Creek 2010



Wallace Creek 2011





“...Passed a large Creek which fall in on the right Side 6 miles below the forks a road passed up this Creek & to the Missouri.” William Clark; Sergeant Gass adds, “In this branch we shot a salmon about 6 pounds weight.”

August 21, 1805



Carmen Creek Culvert Replacement Parmenter Road





Carmen Creek Culvert Replacement Archie Lane



**Carmen Creek Culvert
Replacement – Archie Lane**

Turning Limiting Factors into Habitat Actions

Water Quantity



Channel Structure



Barriers



Habitat Quantity



Riparian Condition



Construction Oversight



Lemhi Soil and Water Conservation District

Lemhi Little Springs Creek

Water Quantity

<u>Date</u>	<u>Flow (cfs)</u>
08/24/2011	14.6
08/25/2011	14.5
08/26/2011	14.5
08/27/2011	14.5
08/28/2011	14.5
08/29/2011	14.3
08/30/2011	14.0
08/31/2011	14.1



Innovations in Design

Lower Lemhi Side-Channel Enhancement



NRCS design to prevent fish entrapment

Our Partners



- Bonneville Power Administration
- Columbia Basin Water Transactions Program
- Custer Soil and Water Conservation District
- Idaho Department of Environmental Quality
- Idaho Department of Fish and Game
- Idaho Department of Water Resources
- Idaho Governor's Office of Species Conservation
- Idaho Soil and Water Conservation Commission
- Idaho Water Resource Board
- Lemhi Regional Land Trust
- Lemhi Soil and Water Conservation District
- National Marine Fisheries Service
- Natural Resources Conservation Service
- Northwest Power and Conservation Council
- Shoshone-Bannock Tribes
- The Nature Conservancy
- Trout Unlimited
- U.S. Army Corps of Engineers
- U.S. Bureau of Land Management
- U.S. Bureau of Reclamation
- U.S. Fish and Wildlife Service
- U.S. Forest Service





Our Staff

Hans Koenig, Project Manager

Allen Bradbury, Project Planner

Abbie Gongloff, Project Planner

Breann Westfall, Project Planner

Questions?





Fishing on the Salmon River

Upper Salmon Basin Watershed Program

955 Riverfront Drive, Suite B

Salmon, ID 83467

www.modelwatershed.org

208-756-6322

Homegrown, Common-Sense Conservation



Upper Salmon Basin
WATERSHED PROGRAM