

Joan M. Dukes
Chair
Oregon

Bruce A. Measure
Montana

James A. Yost
Idaho

W. Bill Booth
Idaho



Rhonda Whiting
Vice-Chair
Montana

Bill Bradbury
Oregon

Tom Karier
Washington

Phil Rockefeller
Washington

April 26, 2012

MEMORANDUM

TO: Chair Dukes and members of the Council

FROM: Tony Grover, Fish and Wildlife Division Director

SUBJECT: Panel discussion on the status of Condit Dam decommissioning and White Salmon River restoration

Todd Olson of PacifiCorp, Bill Sharp of the Yakama Nation, and Margaret Neuman of the Mid-Columbia Regional Fisheries Enhancement Group will discuss the status of Condit Dam decommissioning and plans and prospects for restoration of the White Salmon River ecosystem. There will be a tour of the nearby dam and vicinity immediately following the Council meeting.

Condit Dam Decommissioning

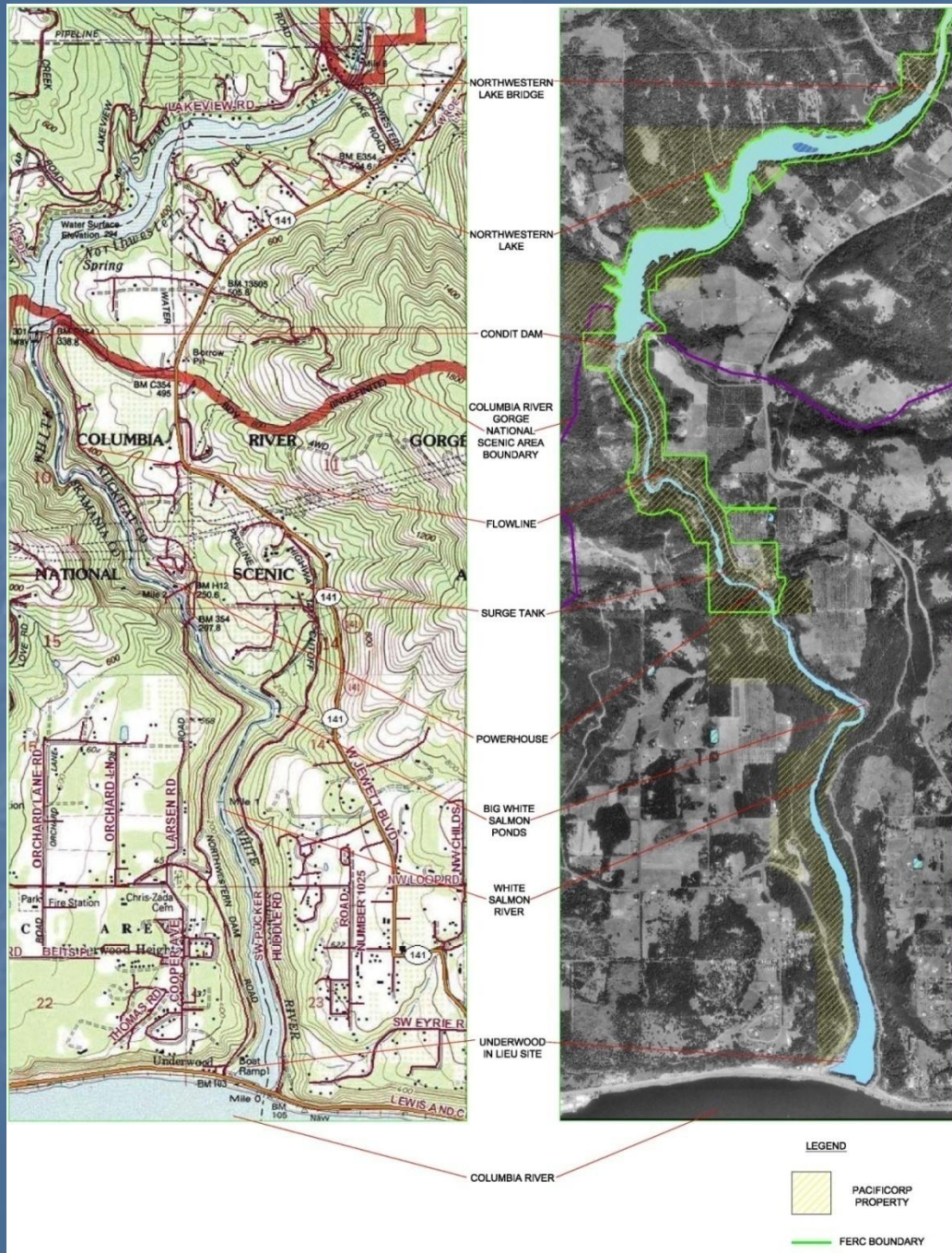
Presentation to Northwest Power
and Conservation Council

May 9, 2012

Project Overview

- Project is located near White Salmon, WA
 - 45-miles east of Portland, OR
- 3 miles upstream of the Columbia River
- Only man-made impoundment between Mt. Adams and the Columbia River
- Only one Columbia mainstem dam (Bonneville) between mouth of White Salmon River and Pacific Ocean

Project Location



Chronology of Major Events – Part 1

- | | |
|-------------------|--|
| December 1988 | Initiate studies and compile information to write the application |
| December 1991 | PacifiCorp filed an application for a new FERC license |
| April & June 1994 | U.S. Fish and Wildlife Service and NOAA Fisheries place fish passage conditions on the new FERC license |
| October 1996 | FERC issues final Environmental Impact Statement (EIS) with mandatory conditions; cost is \$30 million |
| November 1996 | PacifiCorp considers the new license to be uneconomical for its customers, it will cost more to build the fish passage and operate than to buy project replacement power from someone else |

Settlement Agreement Process

- Rather than reject the FERC license and face years of litigation, PacifiCorp decided to initiate technical and settlement discussions with the intervenors.
- Dam removal became the focus of these discussions, but *the company would only continue if the costs were significantly less than the cost of installing fish passage facilities.*
- After nearly three years of negotiations among a very diverse group of interests, the Settlement Agreement was signed.
- Originally the project was to be removed in 2006, but date was extended to 2008 due to the extended time and increased costs for new permitting.

Parties To The Settlement Agreement

PacifiCorp

American River

American Whitewater Affiliation

Columbia Gorge Audubon Society

Columbia Gorge Coalition

Federation of Fly Fishers

Friends of the Earth

Washington Department of Fish
and Wildlife

Washington Wilderness Coalition

Columbia River United

Friends of the Columbia Gorge

Trout Unlimited

Columbia River Intertribal Fish
Commission

Yakama Nation

National Marine Fisheries Service

Friends of the White Salmon
River

U. S. Forest Service

U. S. Department of the Interior

Washington Department of
Ecology

Rivers Council of Washington

Washington Trout

The Mountaineers

The Sierra Club

Chronology of Major Events - Part 2

January 1997	PacifiCorp initiated settlement discussions with the interveners
September 1999	Settlement agreement signed with Federal and State agencies, environmental and tribal support with cost cap (approx. \$28.5m in 2010\$)
July 2000	FERC began National Environmental Protection Act (NEPA) process
May 2002	FERC issued their Final Supplemental Final Environmental Impact Statement endorsing dam removal
September 2002	U.S. Fish & Wildlife Service issued Biological Opinion
July 2004	Filed application for Sections 404 and 10 permits with the U.S. Army Corps of Engineers
February 2005	Settlement agreement amendment signed
September 2005	Department of Ecology released State Environmental Policy Act (SEPA) Draft Supplemental Environmental Impact Statement
November 2005	U.S. Fish & Wildlife Service filed supplement to Biological Opinion
October 2006	NOAA Fisheries issued Biological Opinion
January 2010	Department of Ecology releases SEPA Environmental Impact Statement
October 2011	Department of Ecology releases Clean Water Act 401 Certificate
December 2010	FERC issues Surrender Order
January 2011	PacifiCorp requests rehearing of Surrender Order
April 2011	FERC issues Final Order on Rehearing
April 2011	U.S. Army Corps of Engineers issues 404 Permit
August 2011	Decommissioning of dam begins; dam breach in October 2011

Pre-breach Activities

- Northwestern Lake Bridge stabilization
- City of White Salmon waterline relocation
- Dredging in front of drain tunnel
- Tunneling
- Fish salvage downstream of dam

Northwestern Lake Bridge

Summer 2011



Northwestern Lake Bridge

Summer 2011



City of White Salmon Waterline



Big White Pond Weir Install



Fish salvage at the dam... in the beginning



Fish salvage ... by the end



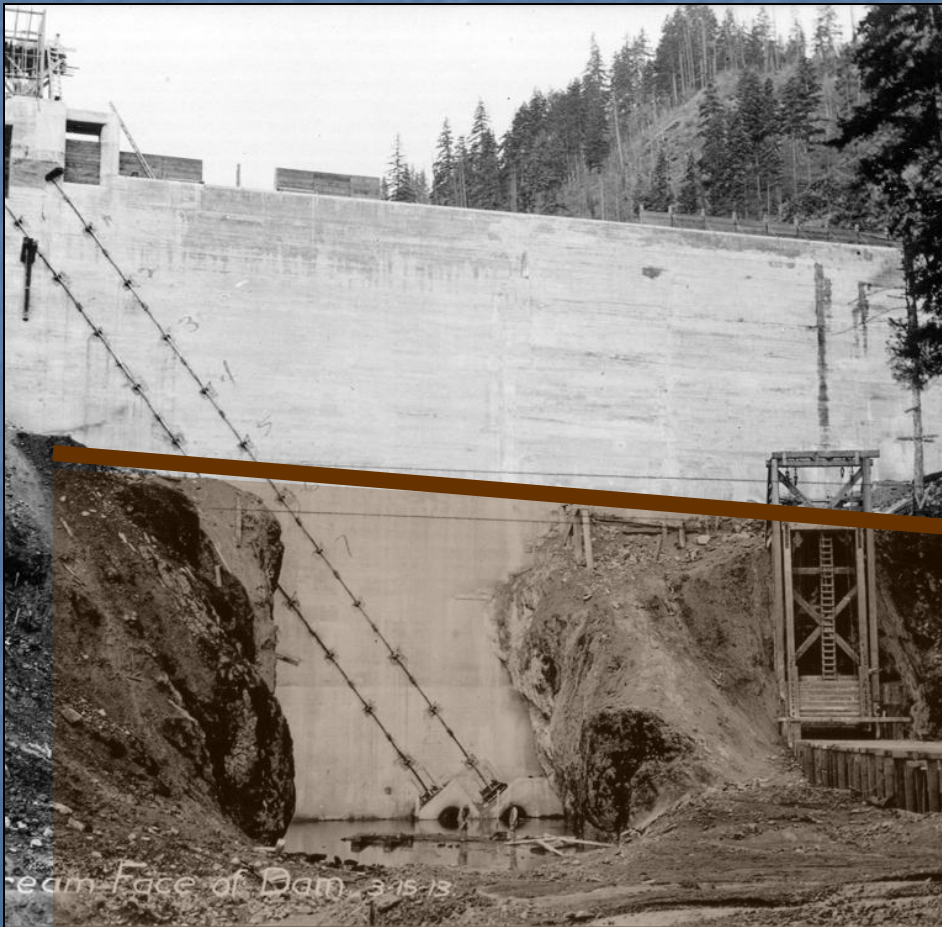
Tunneling Begins



Tunnel – Outside & Inside



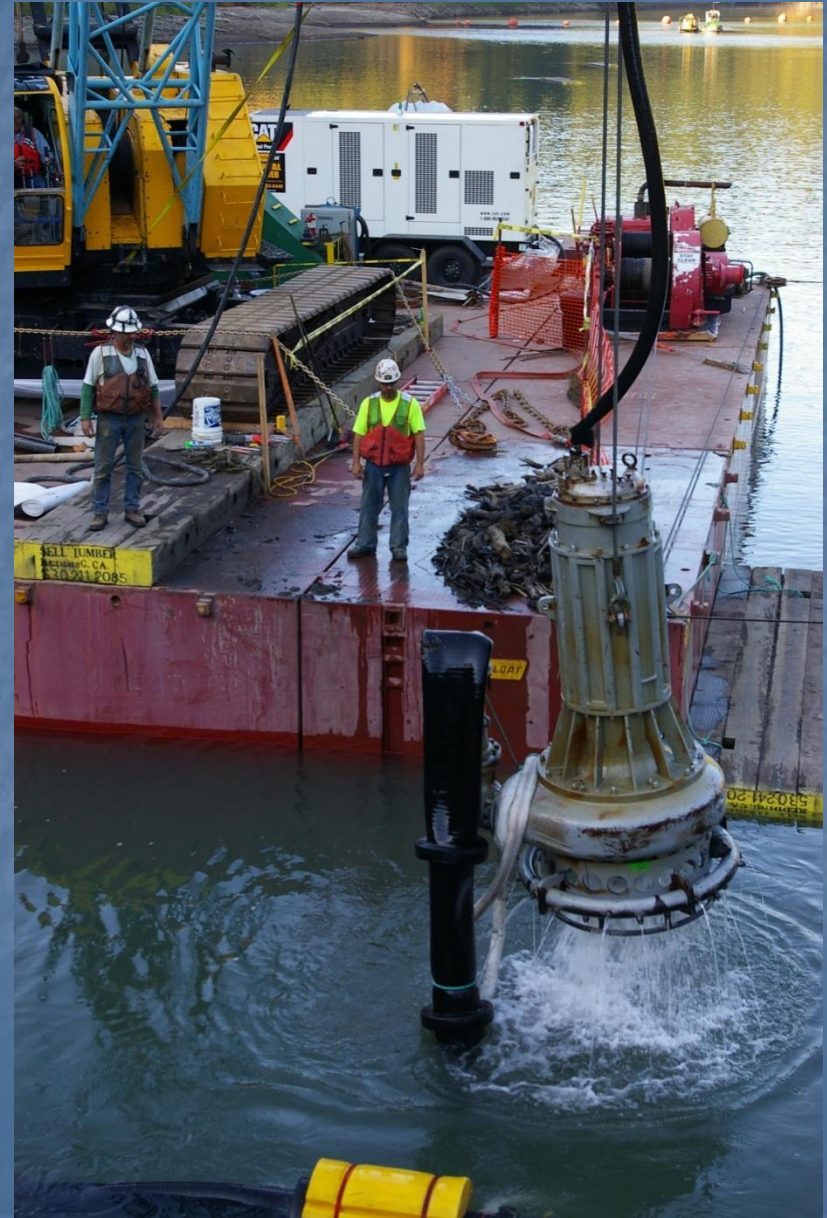
Sediment depth - dredging



Key Element:

- Estimate of 2.4 million cubic yards sediment

Dredging sediment - looking for one of the original cofferdams and woody debris



Breach day – October 26, 2011

Reservoir Before



Breach day – October 26, 2011

Reservoir After



Post Breach

Public Safety



Post Breach

Public Safety



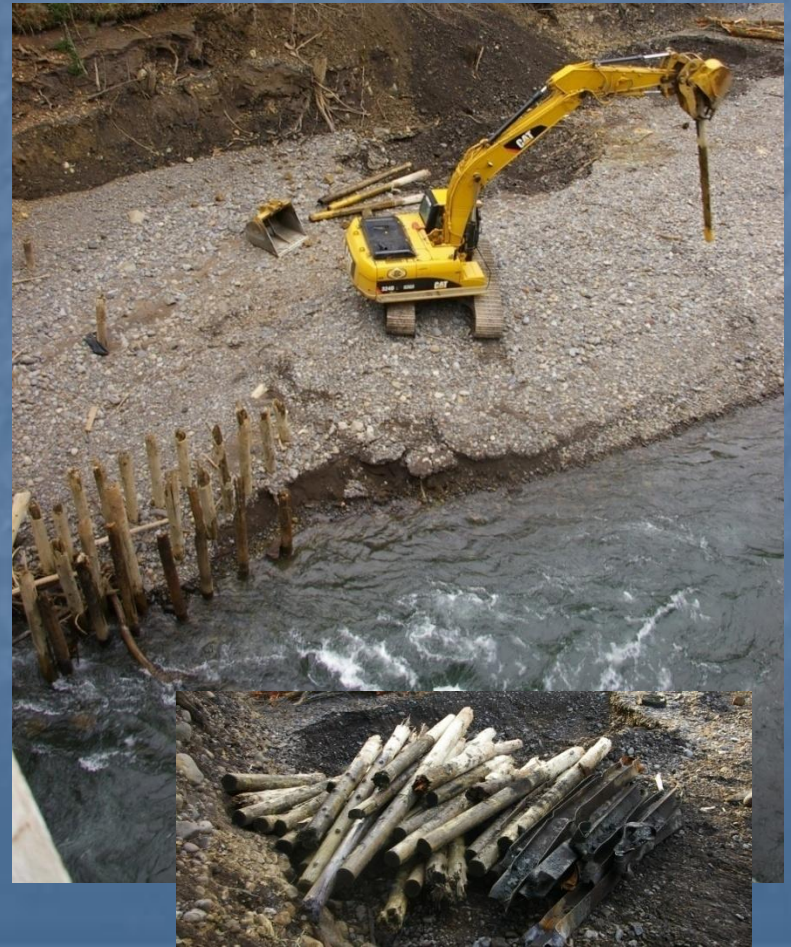
Post Breach

Old cofferdam



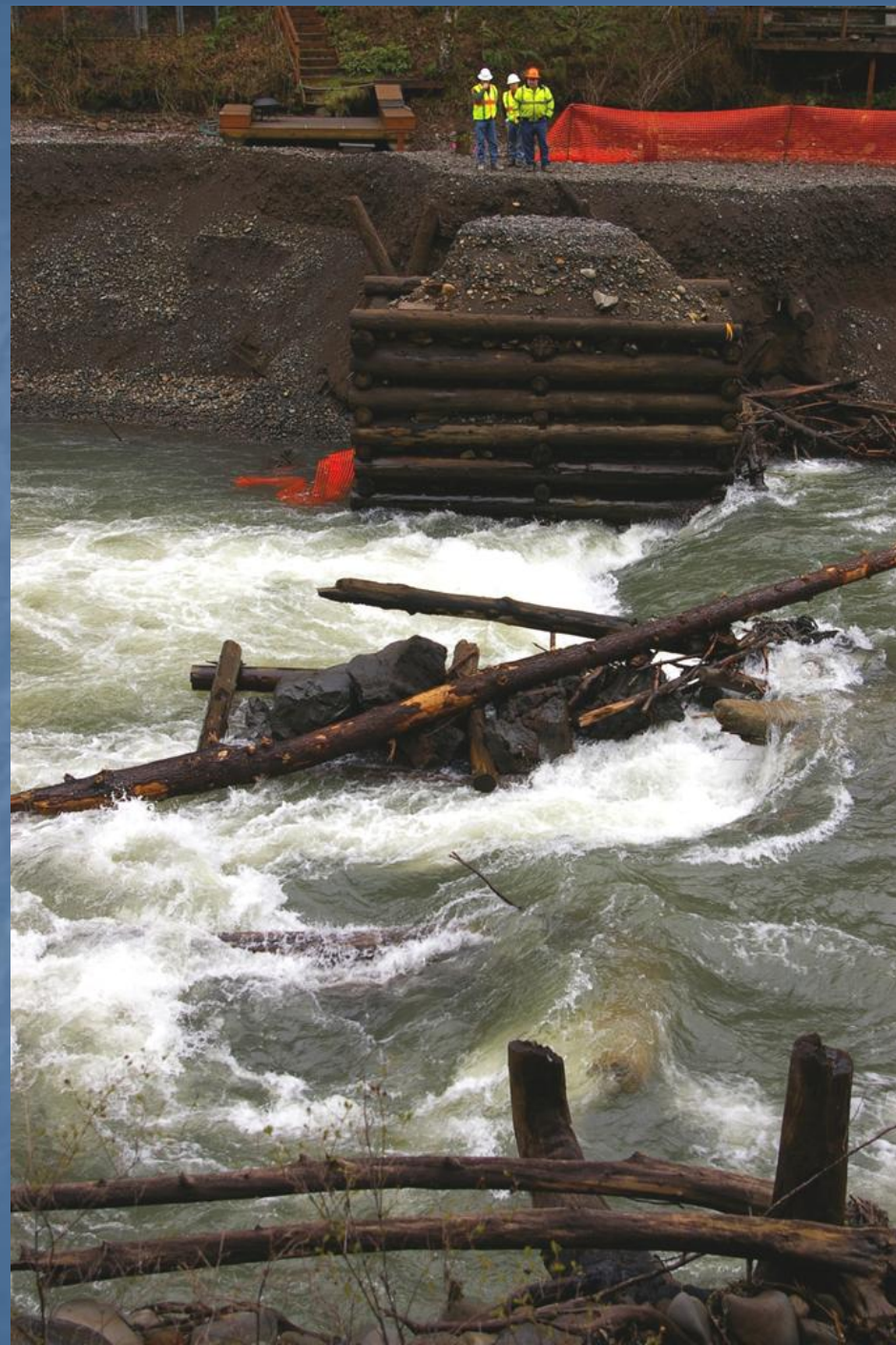
Post Breach Activities

Public Safety – wood pilings at
Northwestern Lake Bridge



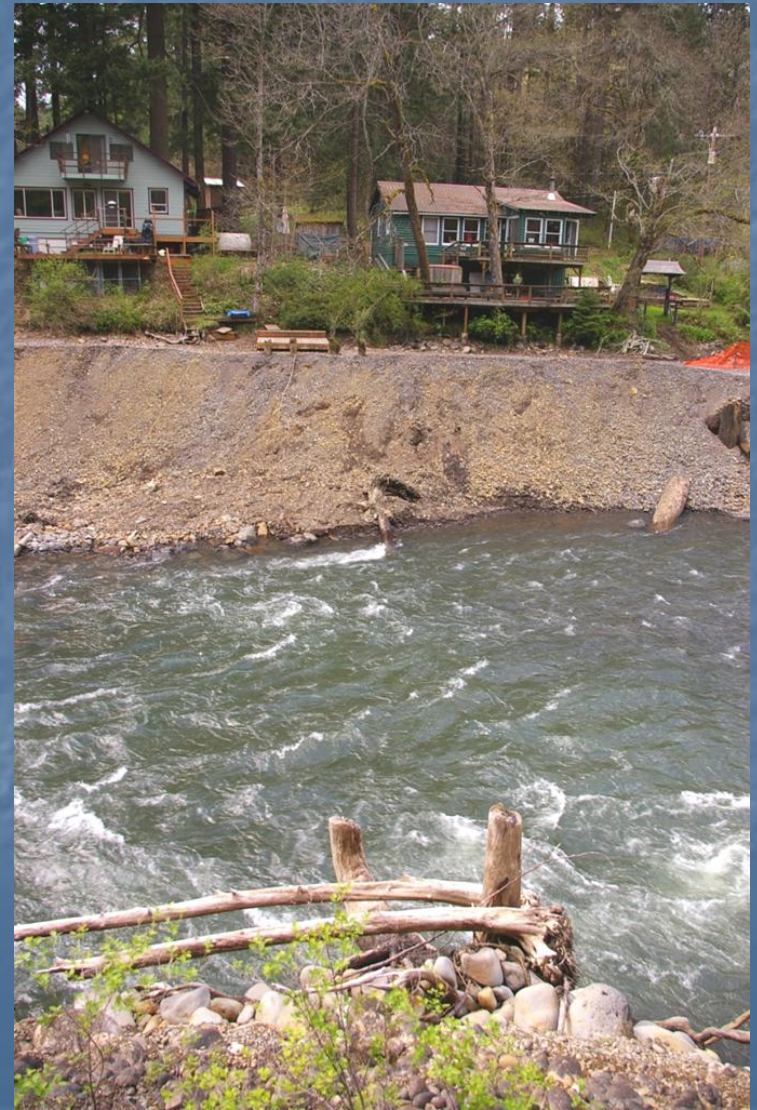
Post Breach Activities

Public Safety – pre-1912
bridge



Post Breach Activities

Public Safety – pre-1912 bridge removed



Post Breach Activities

Demolition - Flowline



Post Breach Activities

Demolition – Surge Tank



Post Breach Activities Demolition - Dam



Post Breach Activities

Demolition - Dam



Post Breach Activities

Sediment management – the former reservoir



Post Breach Activities

Sediment management – the former reservoir



Post Breach Activities

Sediment management – the former reservoir



Post Breach Activities

Cofferddam Removal – build access



Post Breach Activities

Cofferdam Removal



Post Breach Activities

Cofferdam Removal



Post Breach Activities

Cofferdam Removal



Post Breach Activities

NW Bridge – Eastside bridge riprapping



Post Breach Activities

NW Bridge – Westside bridge riprap



Northwestern Park Temporary Boat Take-out



Post Breach Activities

Mouth of White Salmon River - breach day



Post Breach Activities

Mouth of White Salmon River - mid-January 2012



Post Breach Activities

Mouth of White Salmon River - March 2012



Safety

- Limited access at Northwestern park – temporary boat take-out opened April 20, 2012
- River is closed from the boat take-out at the park to downstream of the powerhouse
- No public access from Powerhouse Road
- Lower river is open for fishing; access off of Hwy 141-A
- Please heed warning signs & fencing in project area
- Expect river within the project area to be open for boater use in September

2012 Schedule – end dates

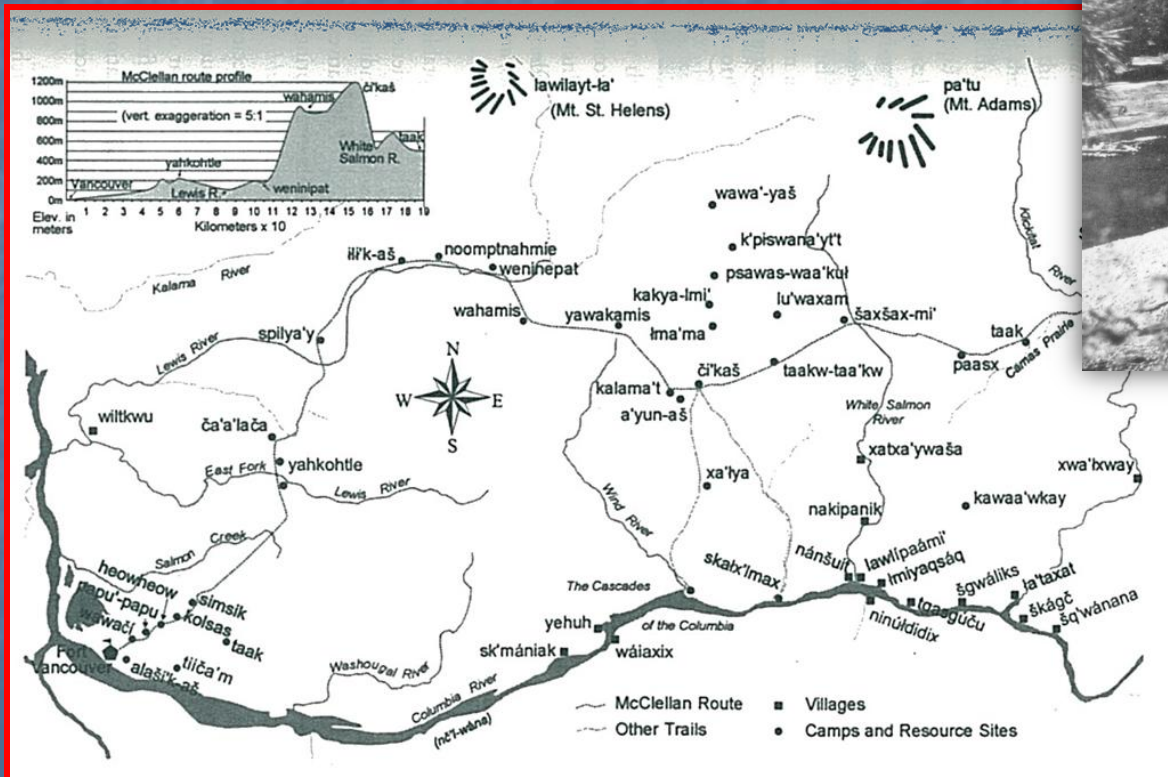
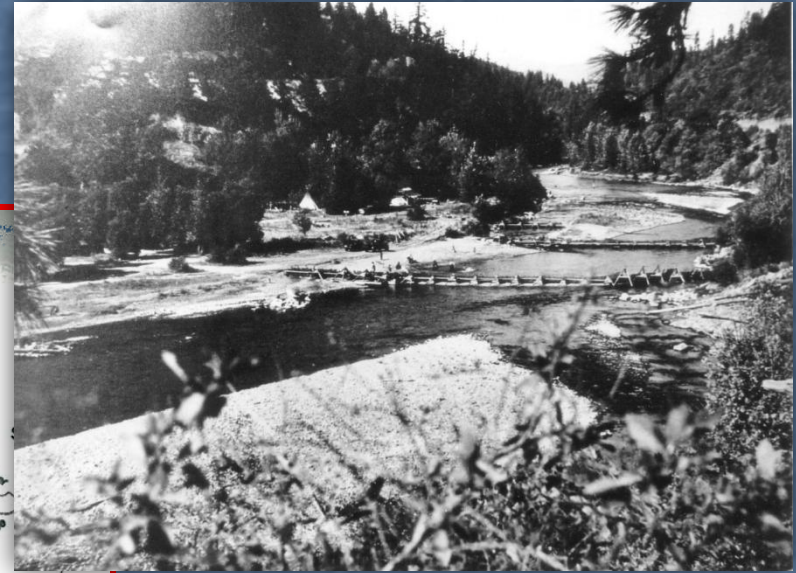
- Flowline, surge tank, penstock removal – Complete
- Cofferdam removal – May 1, 2012
- NW Lake Bridge stabilization – August 31, 2012
- Sediment management – ongoing through August 2012
- Dam removal – August 30, 2012
- Revegetation – Fall 2012 and Fall 2013

For more information please visit:

www.pacificorp.com/condit

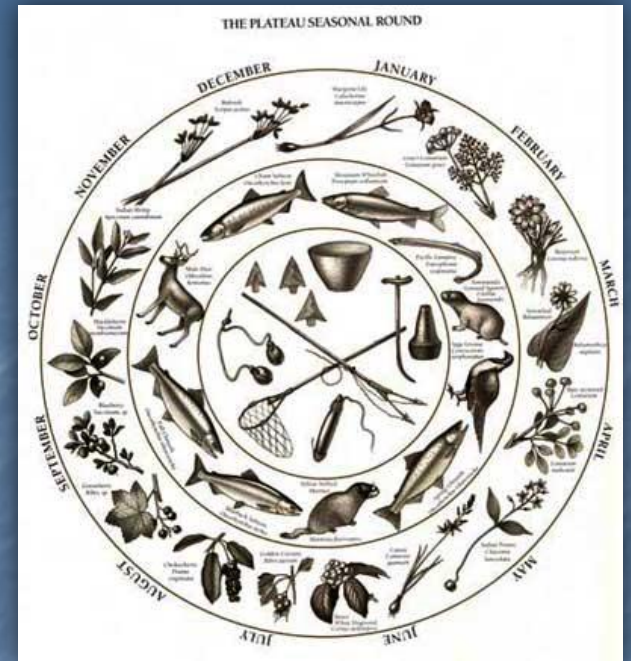
Yakama Nation White Salmon Subbasin

Yakama Nation Fisheries Program
Honor, Protect, Restore

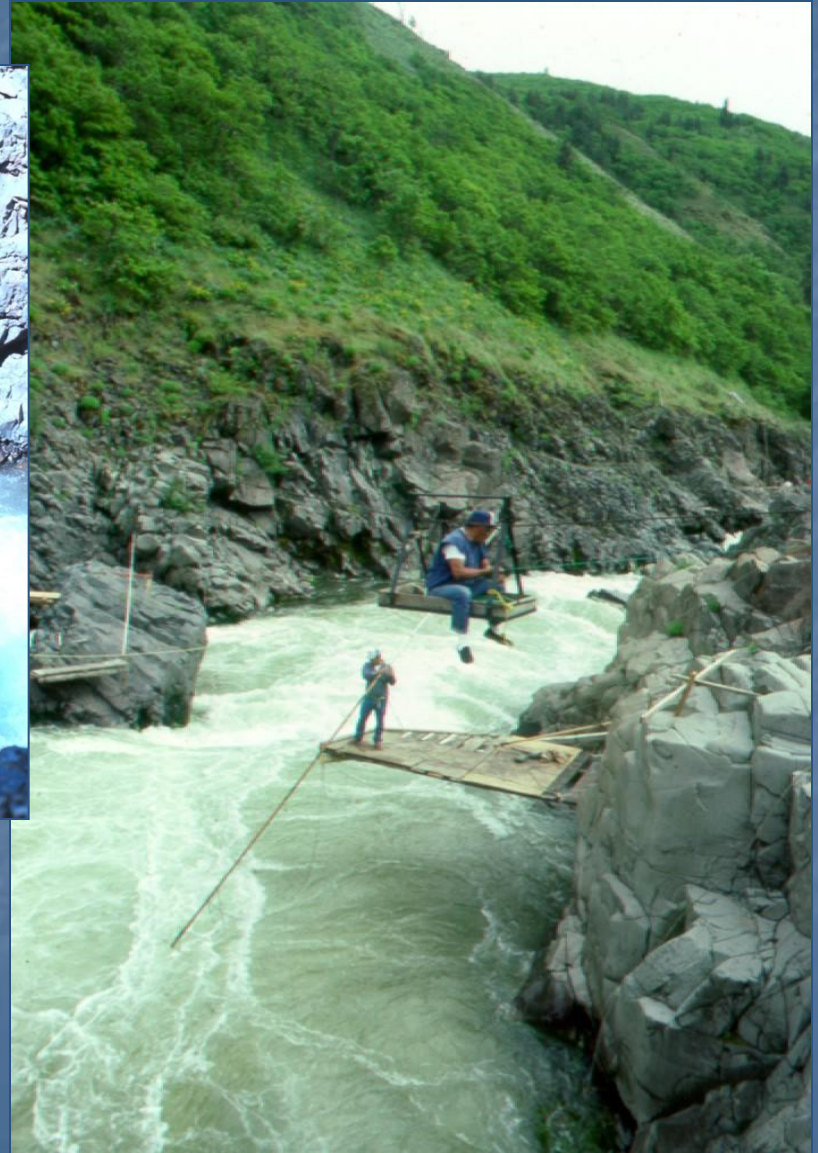


White Salmon/ Klikitat villages

- *nánšuit* (mouth of White Salmon River)
- *lauli-pa-amí* (Bingen, shared with Chinookan)
- *łemiaqsáq* (near Bingen)
- *ilki'lak* (also near Bingen?)
- *nakipanik* (E. bank of WSR at Husum)
- *xatxa'ywaša* (BZ Corner)
- *šaxšax-mi* (Trout Lk)



Surviving dipnet fisheries: Lyle Falls (Klickitat R.) and Sherar's Falls (Deschutes R.)



White Salmon Working Group



- Near monthly meetings since 2006
- Coordination of fish restoration and reintroduction efforts
- Pre and post removal monitoring and evaluation.



East Sand Island

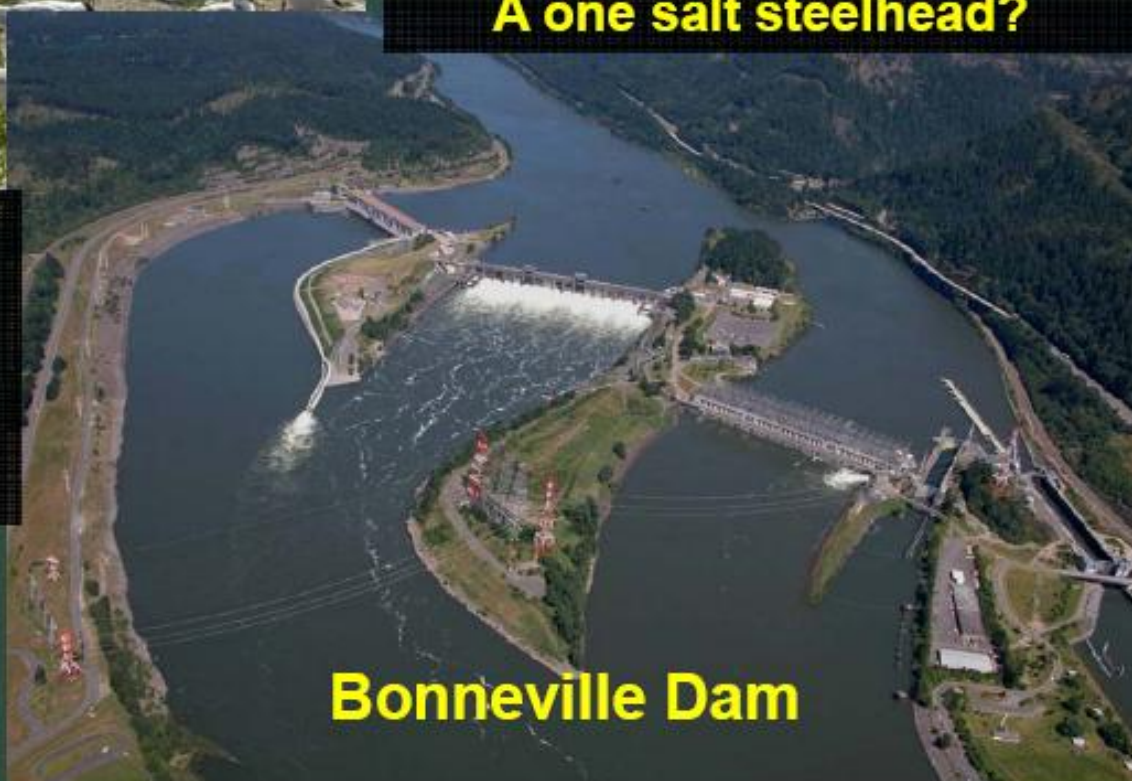


Tagged Sept 2004
Detected March 2005 in
lower Rattlesnake Creek
Detected July 2006 moving
up through adult fish ladder.
A one salt steelhead?

Tagged Oct 2004
Detected April 2005 in lower
Rattlesnake Creek
Tag found Nov 2005 at Tern
Colony



Bonneville Dam



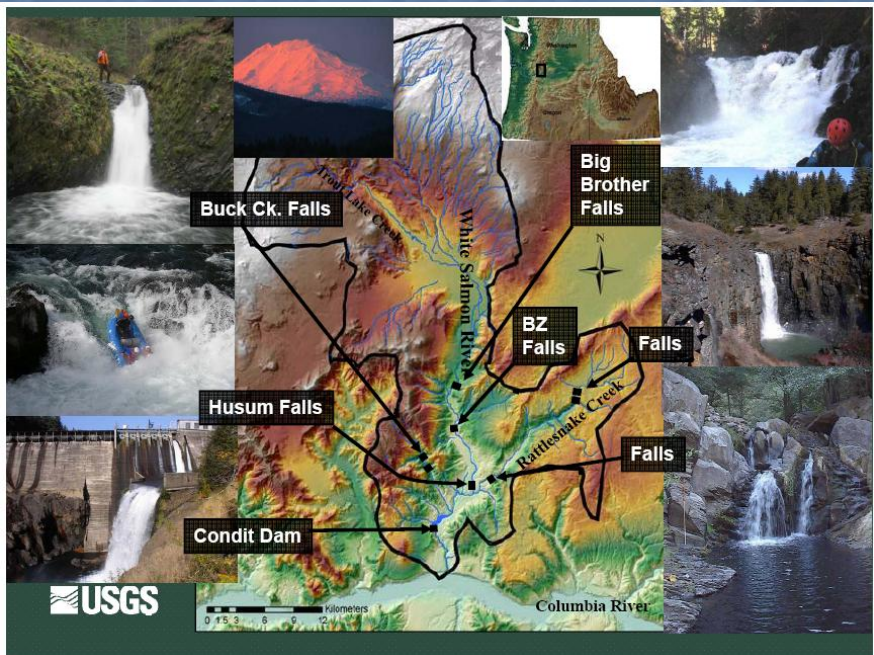
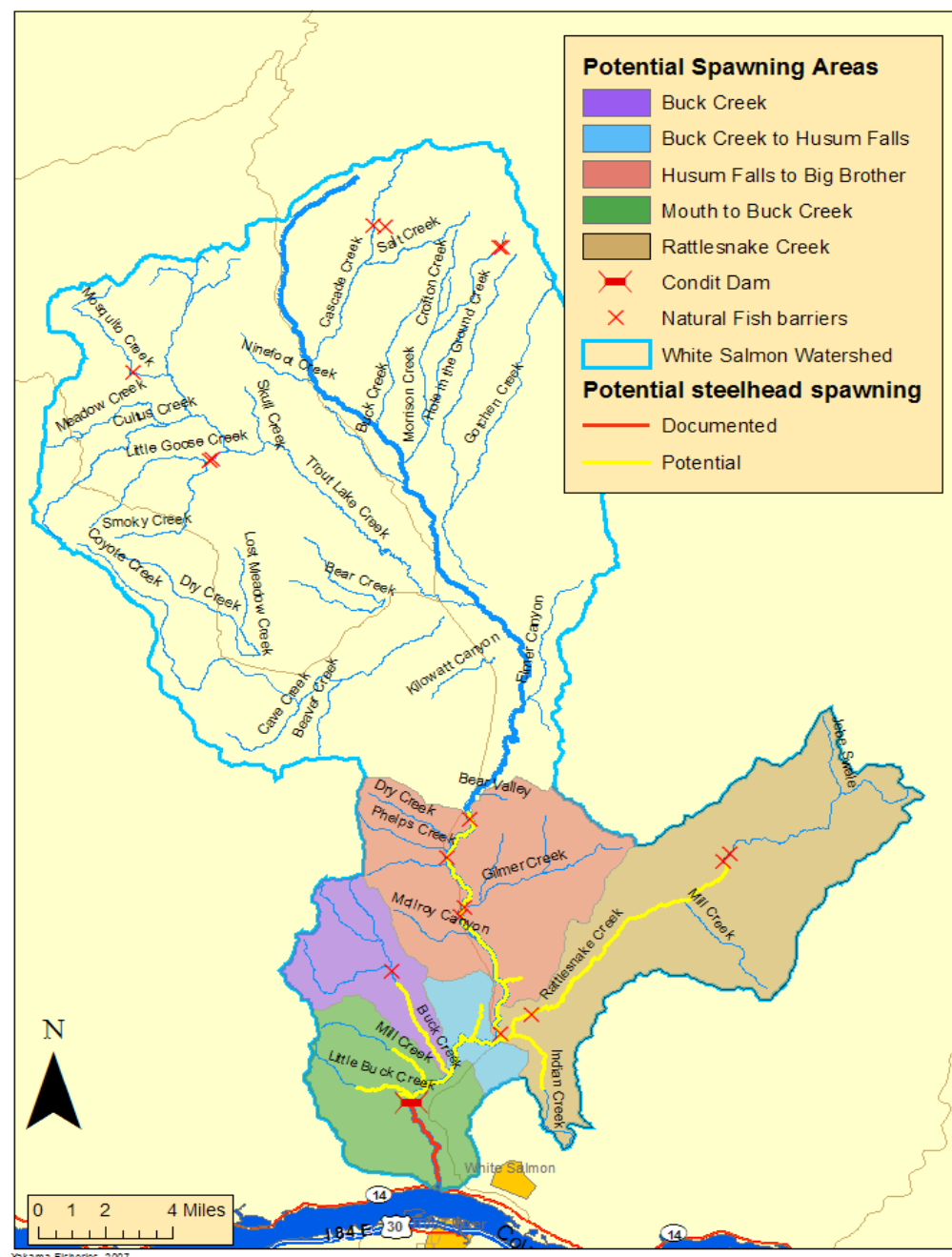
White Salmon Basin Fisheries Resources

- Spring Chinook (LC, extirpated)
- Fall Chinook (LC, Threatened)
- Coho (LC, Threatened)
- Chum (CR, Threatened)
- Steelhead (Mid-C, Threatened)

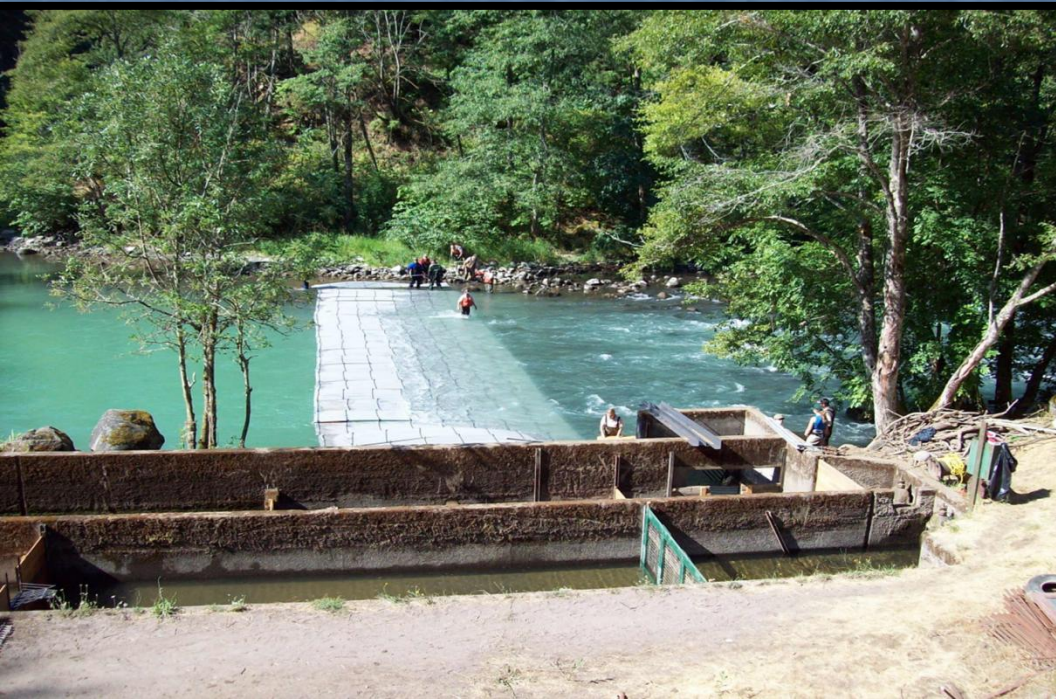
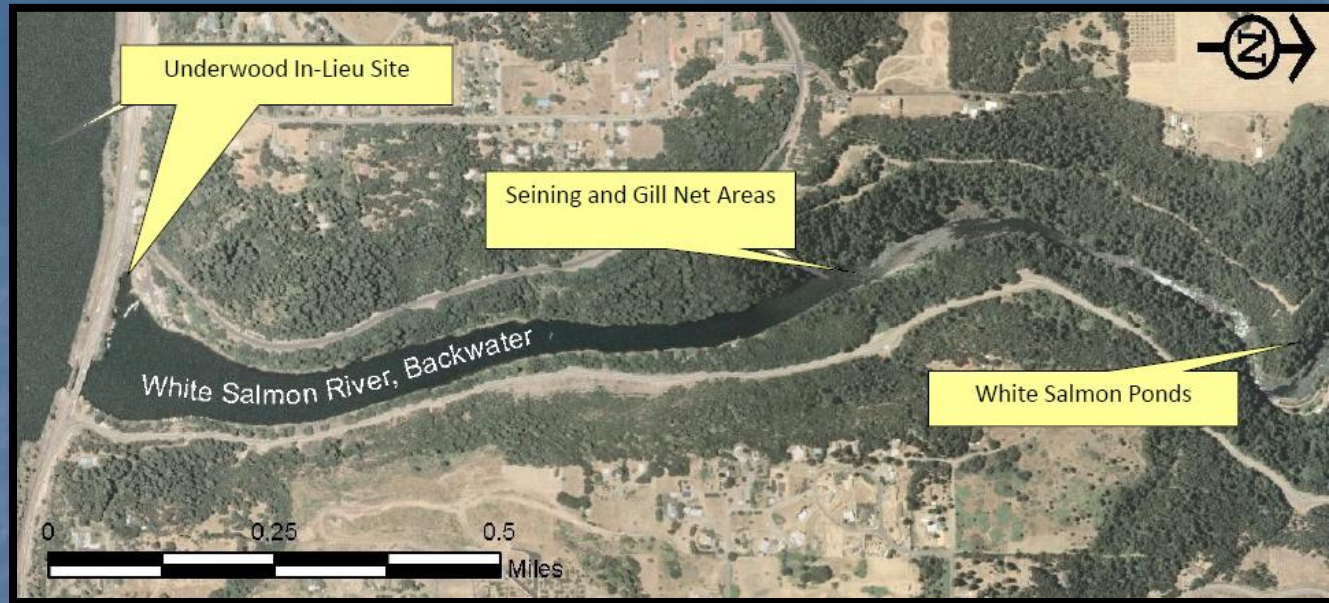
Resident:

Rainbow trout, Cutthroat trout
Bull trout (Threatened), Whitefish
Brook & Pacific lamprey

White Salmon River Steelhead Potential Spawning Areas



Tule Fall Chinook Capture & Transport 2011



2011 Results

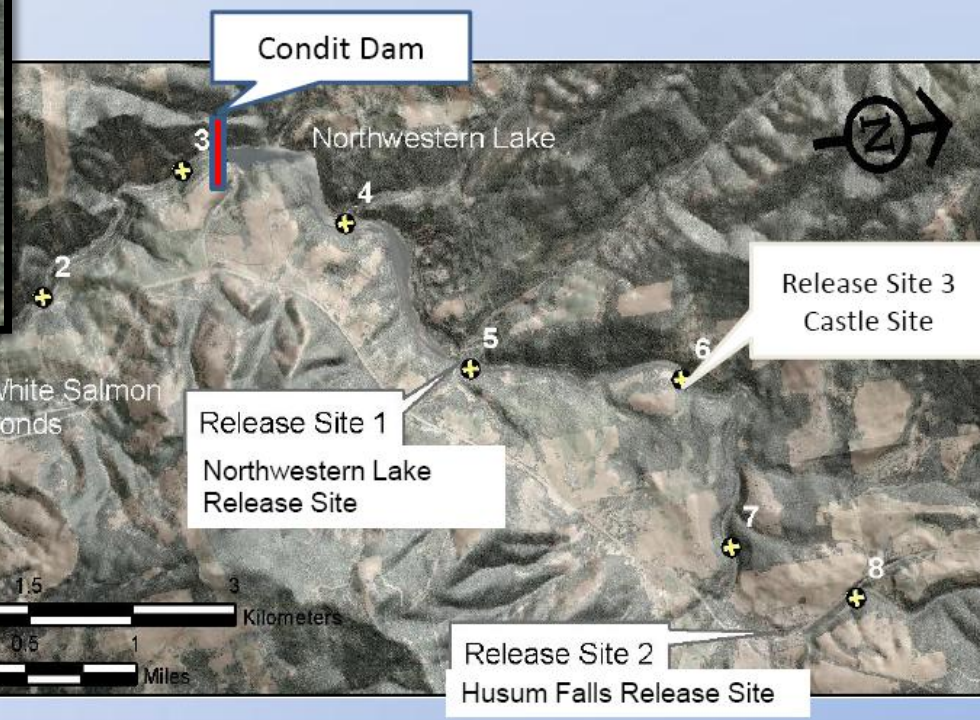
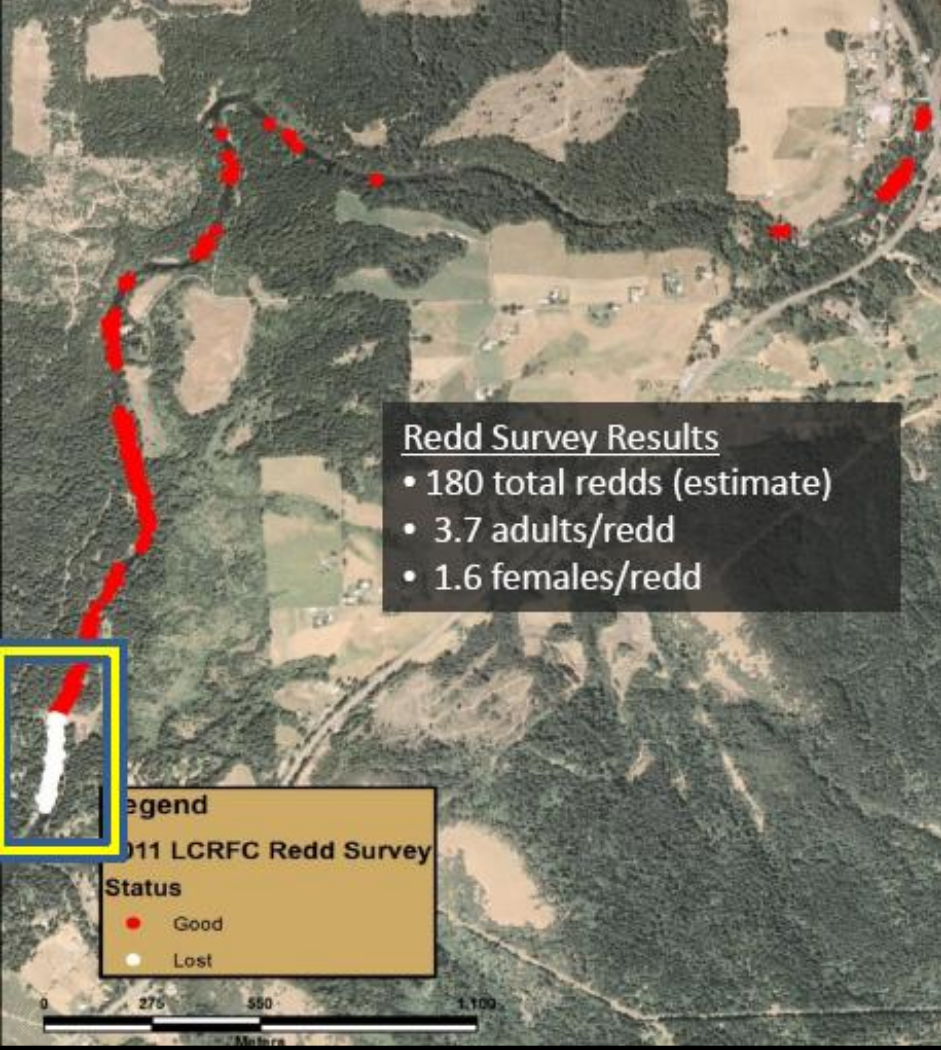
299 females transported

180 Redds



Redd Survey Results

- 180 total redds (estimate)
- 3.7 adults/redd
- 1.6 females/redd



Future Monitoring & Evaluation

- Monitor re-colonization
- Genetic Stock Identification
- Juvenile Production
- Update EDT Model

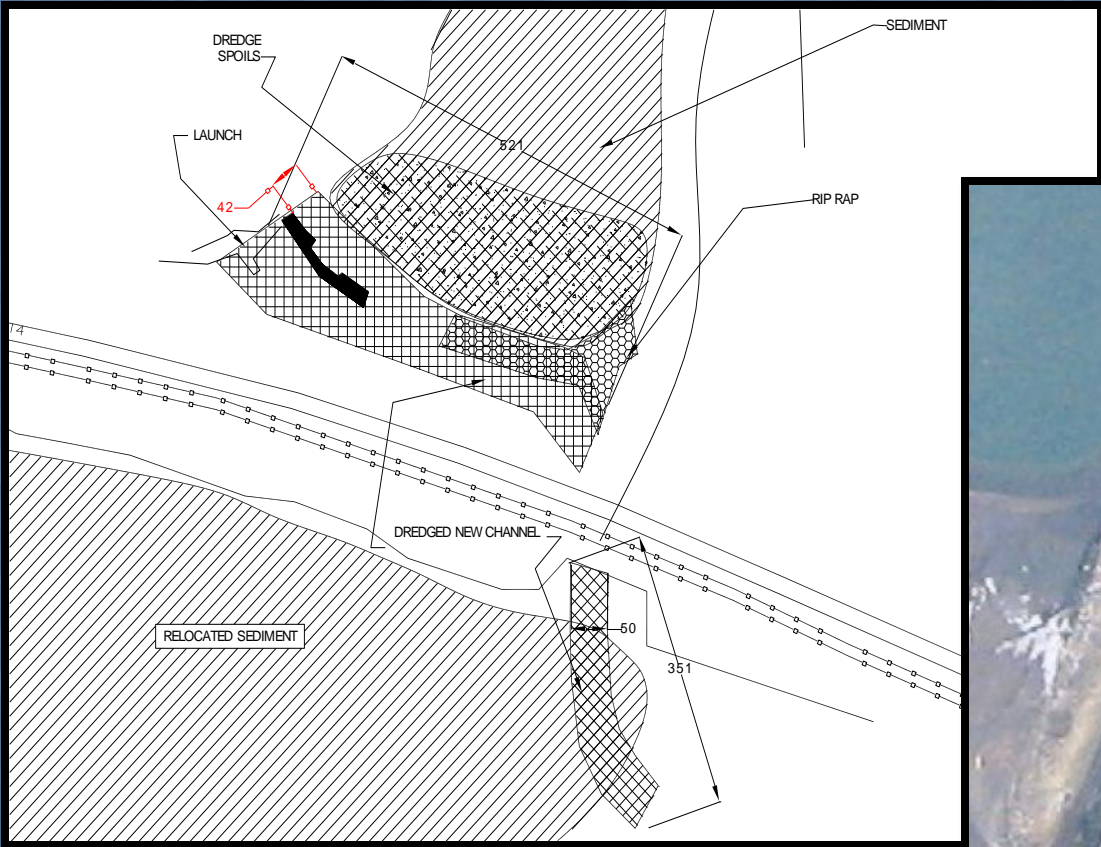


Underwood In-Lieu Site & Delta - Dec. 4, 2011



Underwood In-Lieu Mitigation Fund

Settlement Agreement



Fishery Enhancement Fund

Settlement Agreement

- Habitat Restoration
- Possible Supplementation
- Instream Flow Protection





ykfp.org/klickitat/WS.htm

Accomplishments

(other than removal of Condit Dam!)

- Coordinating group – White Salmon Watershed Management Committee
- Fish population and habitat assessments in key tributaries
- Upper watershed restoration projects
- Fish passage inventory
- Identification and prioritization of projects
- Planning for implementation of other priority projects
- Education and outreach



Biggest Challenges

- Until recently, the watershed was a low priority for many grant funders
- Uncertainty about future ownership in lower river
- Flow limitations in key tributaries
- Landowner willingness prevents implementation of priority projects



Priority Action Needed



Protect habitat in the lower river and “reservoir reach” as PacifiCorps divests of lands in the basin



Actions Needed

- Implementation of passage projects on key tributaries
 - Buck Creek,
 - Spring Creek,
 - Indian Creek
- Proper screening of irrigation diversions and withdrawals



Indian Creek



Spring Creek

Actions Needed

- Protect and increase base flows in tributaries
- Restore hydrologic function of Upper Rattlesnake Creek











Actions Needed



Rattlesnake creek

- Restore riparian function
- Improve instream habitat (address current lack of large wood and associated pools).

Action Needed

Continued outreach and education



Questions?

Contact Information:

Todd Olsen

503-813-6657

Todd.Olson@PacifiCorp.com

Bill Sharp

509-865-5121 Ext. 6355

sharp@yakama.com

Margaret Neuman

509-281-1322

fish@midcolumbiarfeg.com