

Joan M. Dukes  
Chair  
Oregon

Bruce A. Measure  
Montana

James A. Yost  
Idaho

W. Bill Booth  
Idaho



Rhonda Whiting  
Vice-Chair  
Montana

Bill Bradbury  
Oregon

Tom Karier  
Washington

Phil Rockefeller  
Washington

April 26, 2012

## MEMORANDUM

**TO:** Chair Dukes and members of the Council

**FROM:** Tony Grover, Fish and Wildlife Division Director

**SUBJECT:** Briefing on Implementation of the Mid-Columbia Recovery Plan

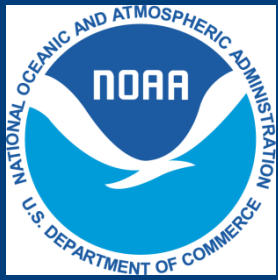
Lynn Hatcher and Scott Rumsey, NOAA Fisheries, Bill Sharp, Yakama Nation and Alex Conley of the Yakima Basin Fish & Wildlife Recovery Board will present an overview of implementation progress under the recovery plan for the protection and restoration of Middle Columbia River steelhead (*Oncorhynchus mykiss*), which spawn and rear in tributaries to the Columbia River in central and eastern Washington and Oregon. The Middle Columbia River steelhead distinct population segment (DPS) was first listed as threatened under the Endangered Species Act (ESA) in 1999. Its threatened status was affirmed on January 5, 2006. The final Middle Columbia River Steelhead Recovery Plan (the Plan) is available at NOAA's website, <http://www.nwr.noaa.gov/Salmon-Recovery-Planning/Recovery-Domains/Interior-Columbia/Mid-Columbia/Mid-Col-Plan.cfm>

Nineteen of the 33 salmon and steelhead species in the Northwest are listed as threatened or endangered. The Middle Columbia River steelhead is among those with the best prospects for recovery, although it will require considerable investment of long-term effort and funding for protection and restoration.

This recovery plan summarizes information from four locally developed recovery plans for management units encompassing Middle Columbia River tributaries in Washington and Oregon. The management unit plans, included as appendices to the DPS Plan, provide recovery actions for the steelhead populations and major population groups that make up the DPS. The Plan draws upon the work of the Interior Columbia Technical Recovery Team (ICTRT), a team of scientists appointed by NMFS to provide a solid scientific foundation for recovery planning.

This Plan also uses information from two "modules" developed by NMFS to address conditions in the Columbia River mainstem and estuary that affect all Middle Columbia steelhead: the Hydro Module, based on the NMFS 2008 Biological Opinion on the Federal Columbia River

Power System (FCRPS), and the Estuary Module (NMFS 2007). In addition to proposed actions in the management unit plans, the Plan relies upon Hatchery and Genetic Management Plans and Artificial Production for Pacific Salmon (Appendix C of the Supplemental Comprehensive Analysis, NMFS 2008 Biological Opinion) to address hatchery effects. For harvest effects, the Plan refers to fishery management planning through the 2008 U.S. v. Oregon agreement for mainstem fisheries, and Fisheries Management Evaluation Plans for tributary fisheries.



# Middle Columbia River Steelhead Recovery Implementation

*Northwest Power and Conservation Council  
Hood River, OR  
May 9, 2012*

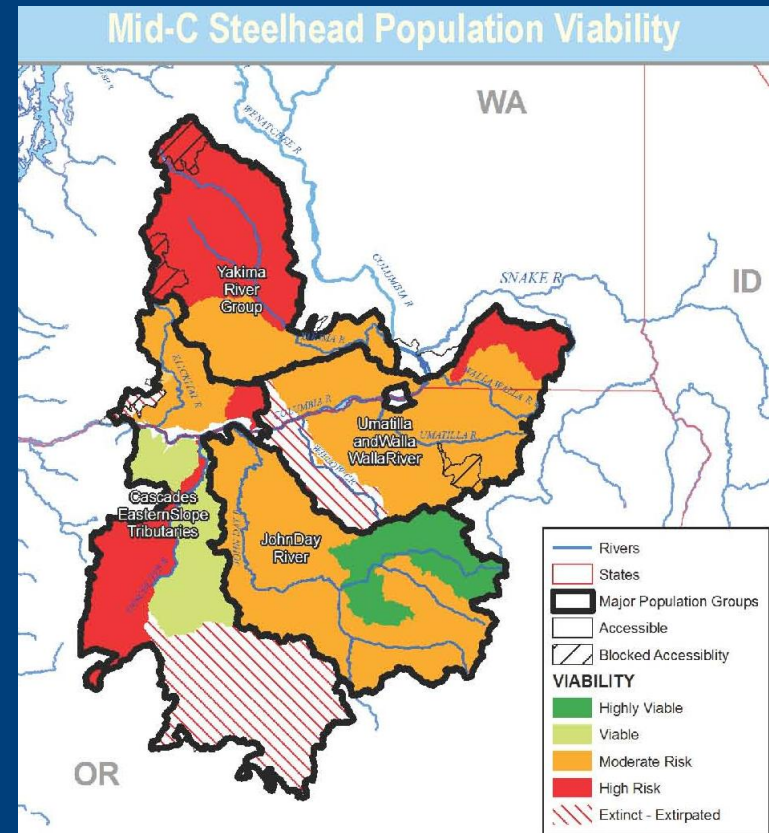


## Shared Objectives of NPCC Fish & Wildlife Program & Recovery Implementation

- Widespread public involvement and regional coordination
- Emphasis of science-based priorities, periodic scientific review, and adaptive management.
- Rely on local implementation that reflects local expertise, policies and priorities
- Ensure implemented projects are cost efficient and ecologically effective

# Middle Columbia River Steelhead

- Listed as threatened in 1999; affirmed in 2006 & 2011
- 17 extant populations
- 4 populations at high risk, 3 populations viable, majority at moderate risk
- Jurisdictionally complex



# Middle Columbia River Steelhead Recovery Plan

- Locally developed
- Science-based approach

- Delisting goals
- Limiting factors
- Recovery actions

Before

- Status/trends and effectiveness monitoring
- Adaptive management

- Implementation:

- Mid-C Forum and Steering Committee
- Mid-C Technical Teams

After



# Middle Columbia Forum

- Confederated Tribes of the Warm Springs Reservation
- Confederated Tribes of the Umatilla Reservation
- Confederated Tribes and Bands of the Yakama Nation
- Oregon Governor's Natural Resource's Office
- Oregon Department of Fish and Wildlife
- Klickitat County
- Washington Governor's Salmon Recovery Office
- Washington Department of Fish and Wildlife
- Yakima Basin Fish and Wildlife Recovery Board
- Snake River Salmon Recovery Board
- NOAA Fisheries

# Middle Columbia River “Management Units”

## Washington Gorge

- WA Gorge Implementation Team

## Oregon

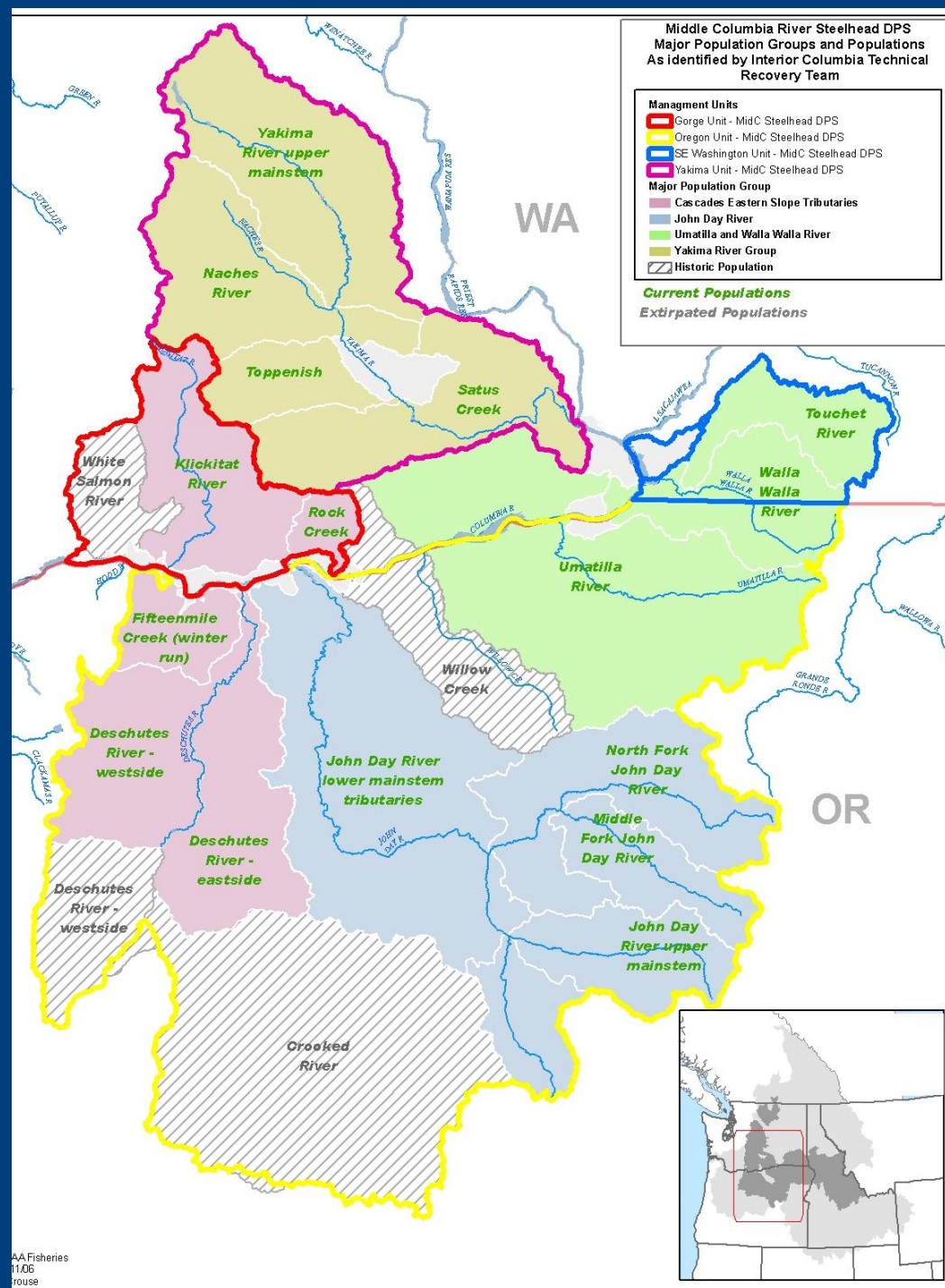
- ODFW
- Oregon Mid-C Implementation Team

## Yakima Basin

- Yakima Basin Fish and Wildlife Recover Board

## Southeast Washington

- (Lower) Snake River Salmon Recovery Board





# Middle Columbia Steelhead Management Units

SE  
Washington  
Unit



Steve Martin, Executive Director,  
Snake River Salmon Recovery Board

# SE Washington Management Unit

- 2011 Recovery Plan Update is complete and approved by NOAA
- Complex, multi-phase habitat restoration and fish passage projects with broad partnerships
- Funding sources and message
- Major initiatives

# Complex Projects are now the Norm

- Dike setback/floodplain restoration
- Large wood replenishment
- Mill Creek fish passage
- Made possible due to confidence in funding (assessment, conceptual design and final designs), trust amongst stakeholders and partnerships

# Funding

- SRFB administrative funding provides human capacity to manage process and maintain stakeholder buy-in
  - SRFB and BPA habitat programmatic funding is predictable, providing for a highly probable work schedule and strategic sequencing of projects
-

## Major Initiatives

### Made Possible due to Predictability of Funding and Human Capacity to Keep it all Together

- Mill Creek fish passage in Walla Walla – 10 year project, \$15 million with myriad partners
- Dike setback/Floodplain restoration on Tucannon – 20 miles
- Large tree wood replenishment on Tucannon – 1,000's of large trees
- Asotin Creek Intensively Monitored Watershed
- CHaMP

# Middle-Columbia Steelhead Management Units

Oregon Unit



Adrienne Averett, Eastside Implementation Coordinator, ODFW

## Oregon Management Unit

- NPCC subbasin plans = key references for the OR Mid-C Plan
- Primary H's affecting viability of OR's Mid-C Populations:
  - Tributary habitat degradation
  - Columbia mainstem hydrosystem operations & passage
    - *Substantial threat for John Day adult returns*
  - Out-of-DPS (Snake River) hatchery strays
- OR Mid-C Implementation Team = foundation for local recovery action implementation

# Oregon Mid-C Implementation Team

81 Members

44 Entities



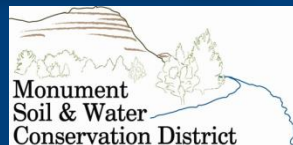
Grant SWCD



CENTRAL OREGON IRRIGATION DISTRICT



Grant County



Gilliam SWCD

Lower John Day Conservation Work Group



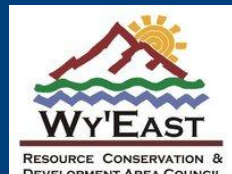
Wasco County Watershed Councils

Mid John Day – Bridge Creek Watershed Council



Gilliam-East John Day Watershed Council

Umatilla Basin Watershed Council





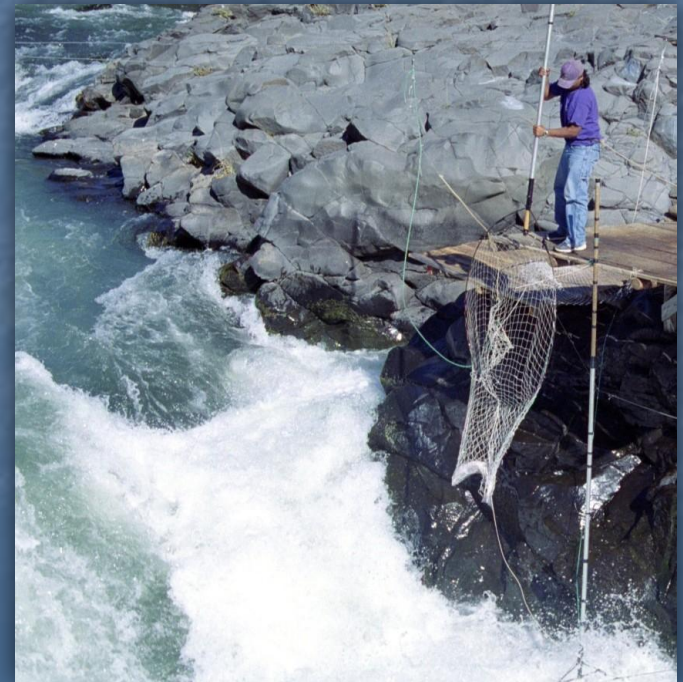
## Oregon Management Unit – NPCC Assistance

- Use Recovery Plans as sub-basin plans for listed fishes
- Use Mid-C Recovery Plan as strategic funding priority tool
- Support implementation of high priority recovery actions and RM&E objectives
- Benefits =
  - Aligning BiOp and Mid-C recovery priorities and
  - Recovering Mid-C steelhead to abundant, productive, and diverse levels



Bill Sharp  
Southern Ceded Lands  
Coordinator

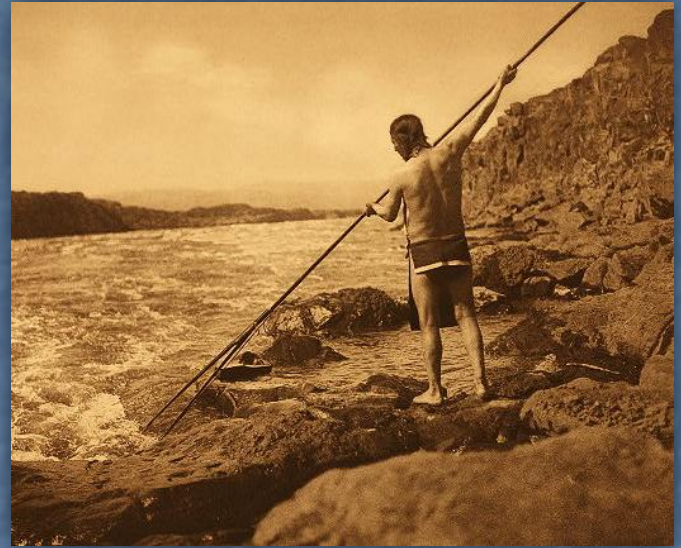
Yakama Nation Fisheries Program  
*Honor, Protect, Restore*



## Yakama Nation's Mid-C Goals:

Rebuild White Salmon, Klickitat, Rock Creek, Pine Creek, and Yakima steelhead populations to broad sense recovery goals (higher than delisting).

Protect and improve status of unlisted species (spring Chinook, fall Chinook, coho, pacific lamprey) so they never get listed.



# Washington Gorge Implementation Team & Process

## Federal/State and Local Entities

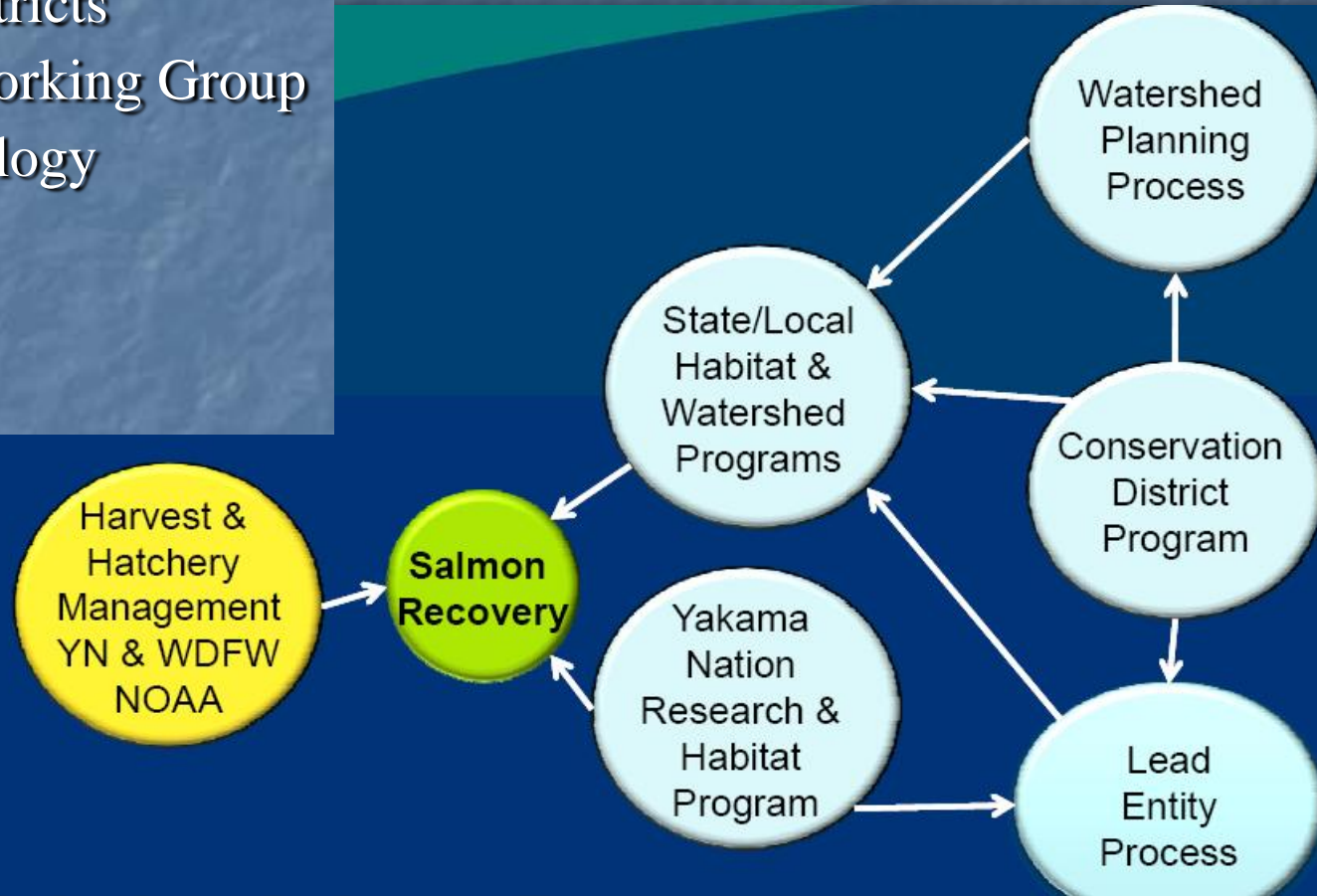
- Klickitat County
- WS Watershed Mgmt Council
- Conservation Districts
- White Salmon Working Group
- WA Dept. of Ecology
- USGS
- USFWS
- NMFS

## Co-Managers

- Yakama Nation
- WA State Department of Fish and Wildlife

**Nora Berwick**

Washington Gorge  
Implementation  
Team Coordinator



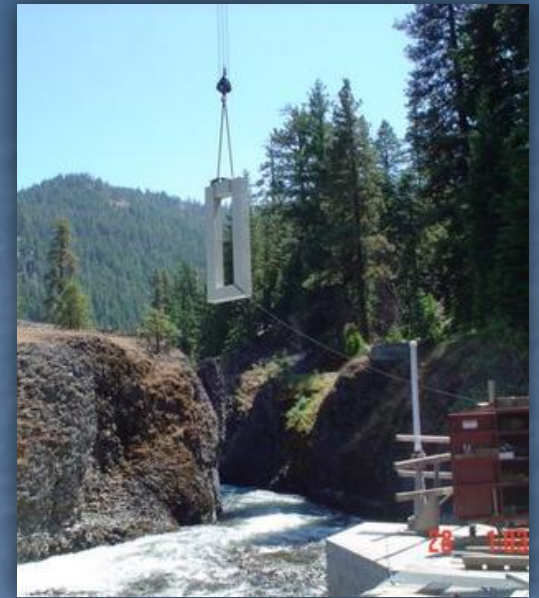
# Priority Actions in Klickitat Basin

- Viability estimates (abundance and productivity)
- Habitat issues
  - Reconnect flood plains
- Interaction concerns with hatchery fish including Skamania Stock steelhead, coho, and fall Chinook



# Gorge M.U. – VSP Research

- Key Infrastructure:
  - Lyle Falls Fishway & Monitoring Facility
  - Castile Fall Monitoring Facility



# Gorge M.U. – VSP Research

## Abundance & Productivity

- Klickitat, Rock, White Salmon
- Yakima Subbasin
  - *O. mykiss* Life Cycle Modeling
  - Kelt Reconditioning
  - Science guiding YRBWEP process



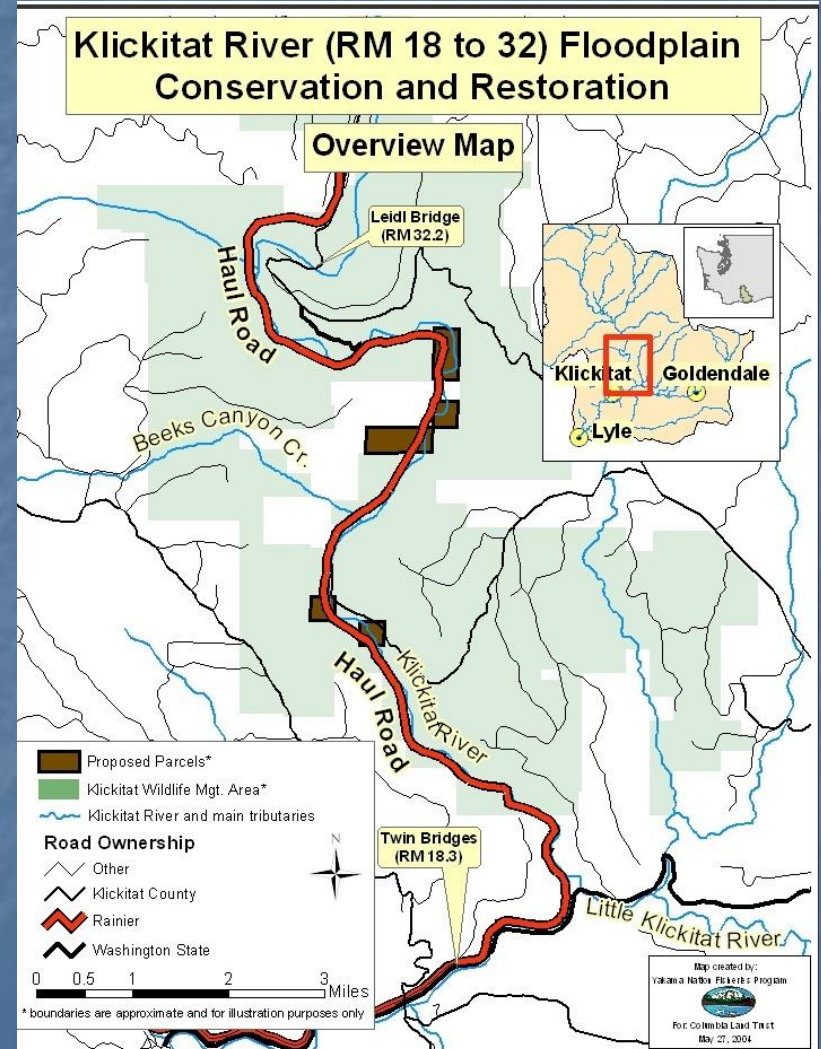
# Gorge MU – Habitat Assessment

- Klickitat mainstem & tributary habitat assessments (YN)
- Little Klickitat habitat assessment (Klickitat County and CKCD)
- Rock Creek habitat assessment & geomorphic assessments (YN & CKCD)
- Rock Creek/Eastern Tributaries habitat assessment and shade and sediment transport assessments (Klickitat County and CKCD)
- White Salmon tributary assessment and former NW Lake restoration (UCD, YN, USGS, USFWS, PC)





# Klickitat River Haul Road



# Hatchery Effects

## Assessment of Effects

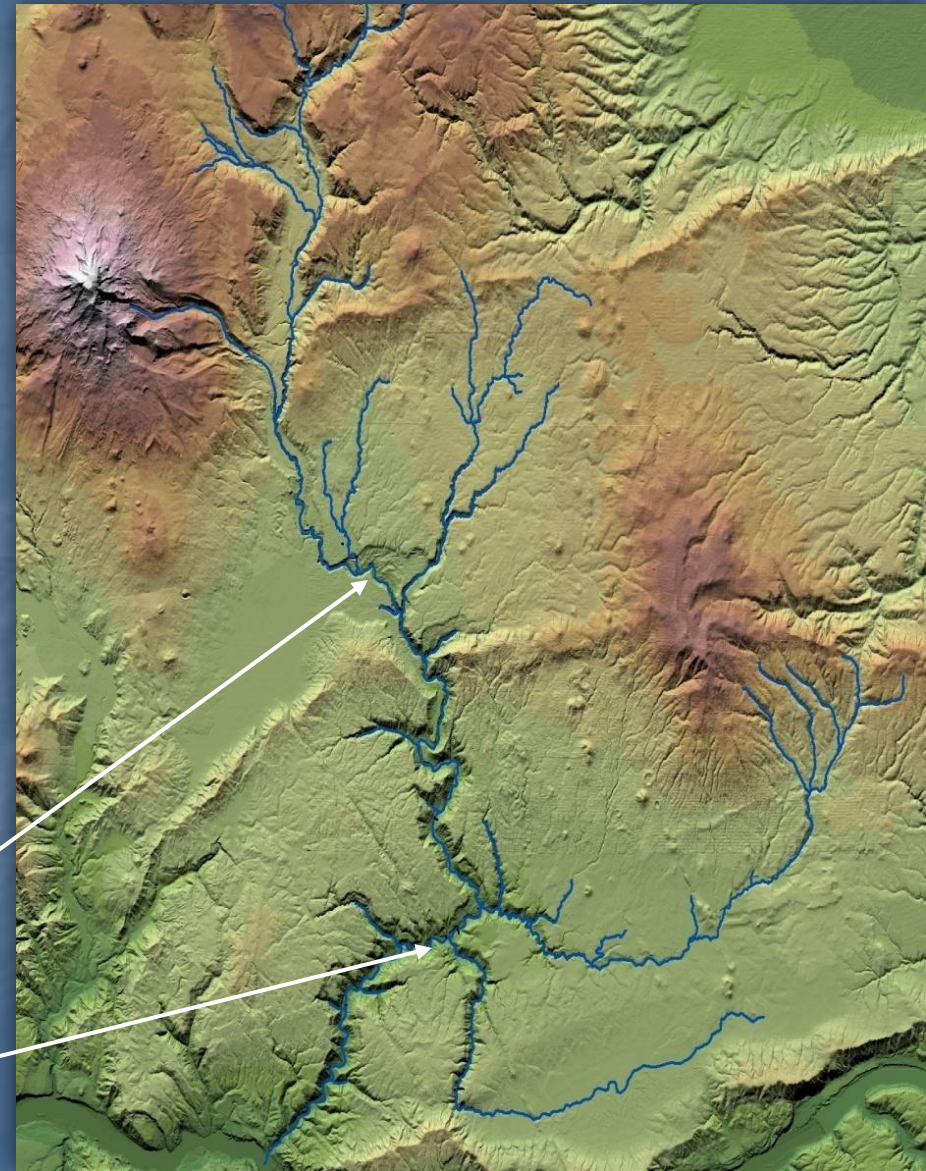
- Spatial and Temporal Distribution
- Genetic Analysis

## Hatchery Improvements

- YKFP & HSRG Measures
- Wahkiacus Hatchery Construction

**Klickitat Hatchery**  
Rm 43.0

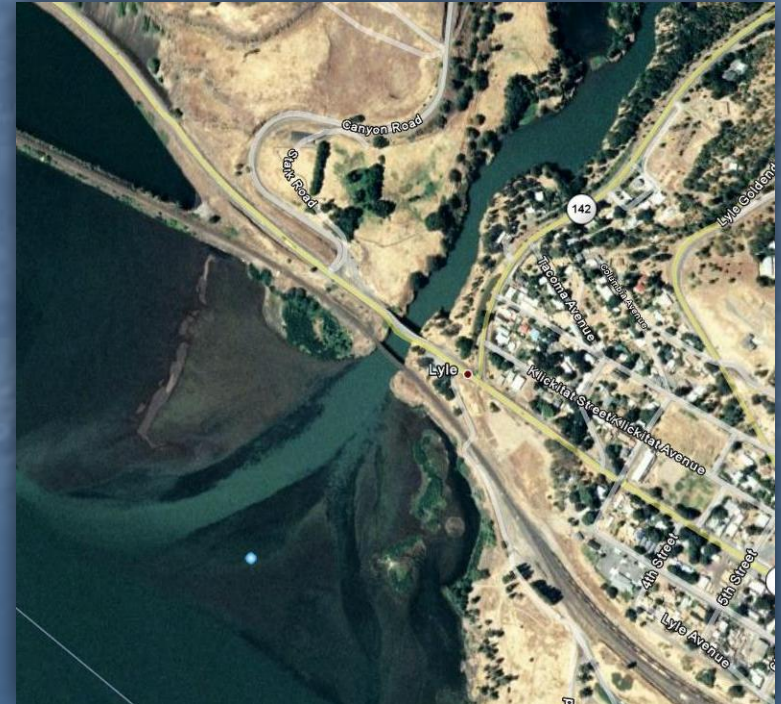
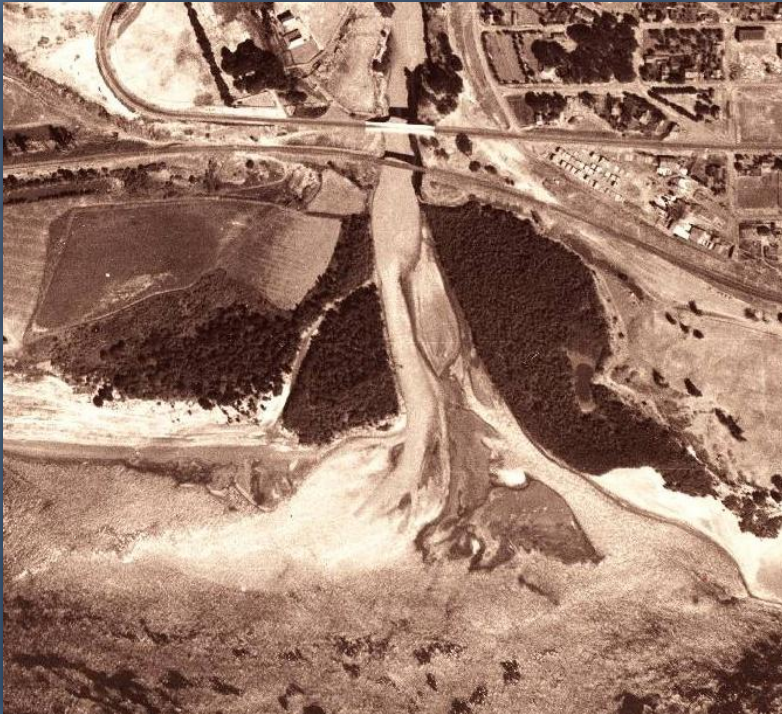
**Wahkiacus Hatchery**  
(proposed) Rm 17.0



# Gorge M.U. Areas of Concern:

## Near shore reservoir habitats

- Predation hotspots
- Thermal source
- Noxious aquatic/riparian vegetation source



# Middle Columbia Steelhead Management Units

Yakima  
Unit

Alex Conley, Executive Director,  
Yakima Basin Fish & Wildlife Recovery Board

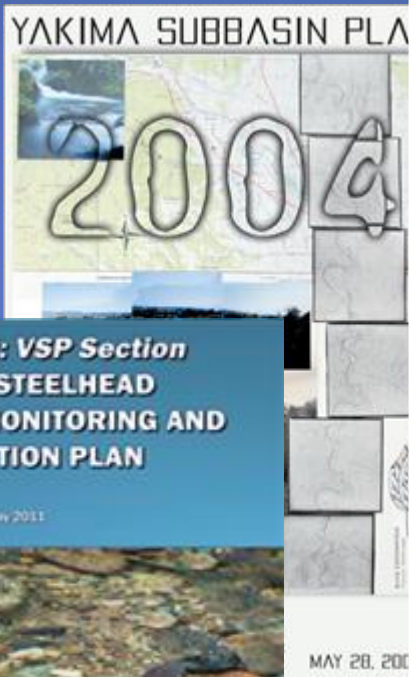
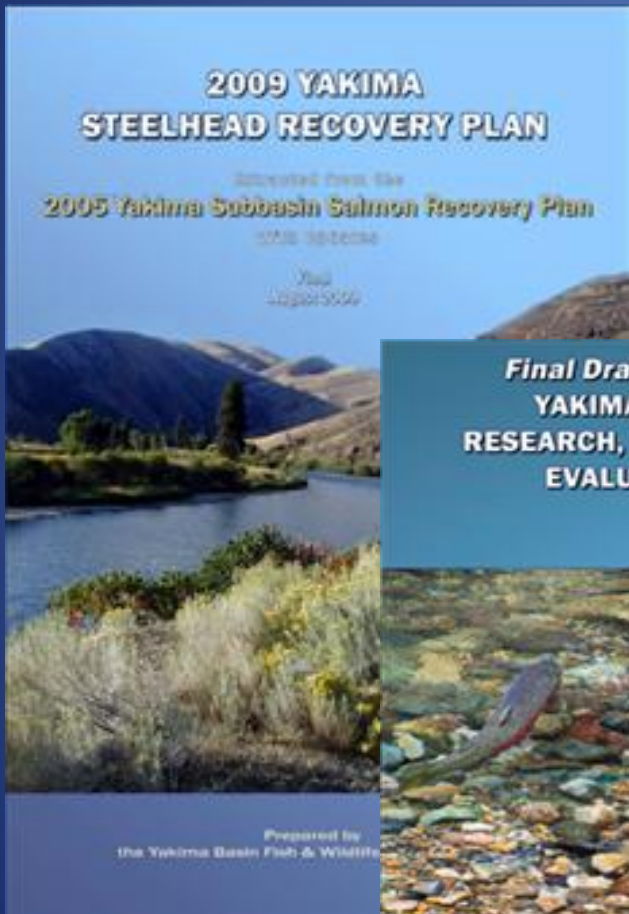


YAKIMA BASIN  
FISH AND WILDLIFE  
RECOVERY BOARD

# Who We Are



# Locally-driven Planning



## Goals and Objectives

Riparian Habitat Planted

Goal: 1,145 Acres Actual: 250.84 Acres Progress: 22% Completed



Fish Screens Installed or Modified

Goal: 120 Each Actual: 97 Each Progress: 81% Completed



Riparian Habitat Restored Under CREP

Goal: 31.5 Miles Actual: 7.85 Miles Progress: 25% Completed



Barriers Removed

Goal: 20 Each Actual: 8 Each Progress: 40% Completed



Permanent Protection under Easements and Acquisitions

Goal: 7.2 Miles Actual: Miles Progress: 0% Completed

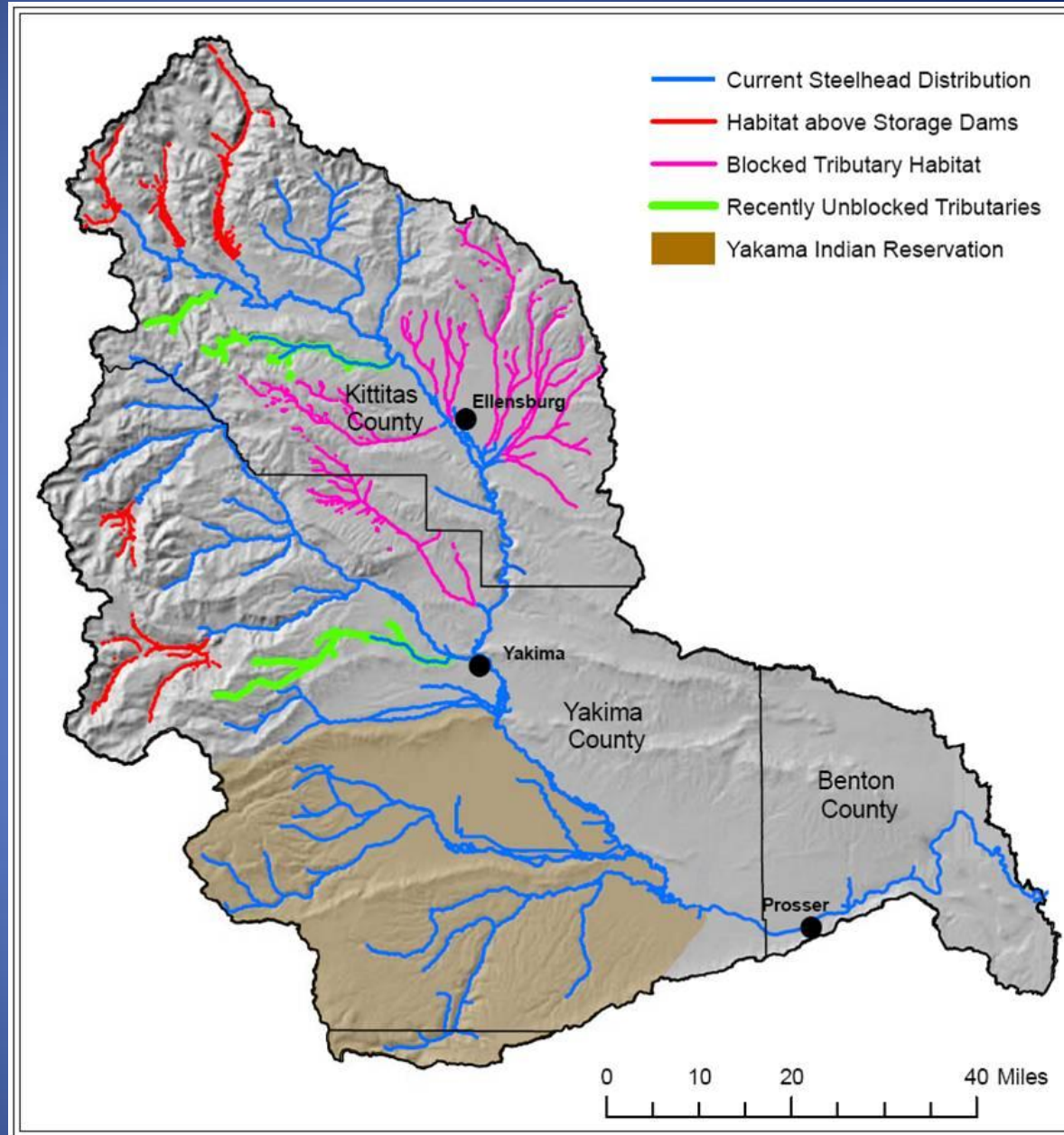


# Supporting Priority Projects

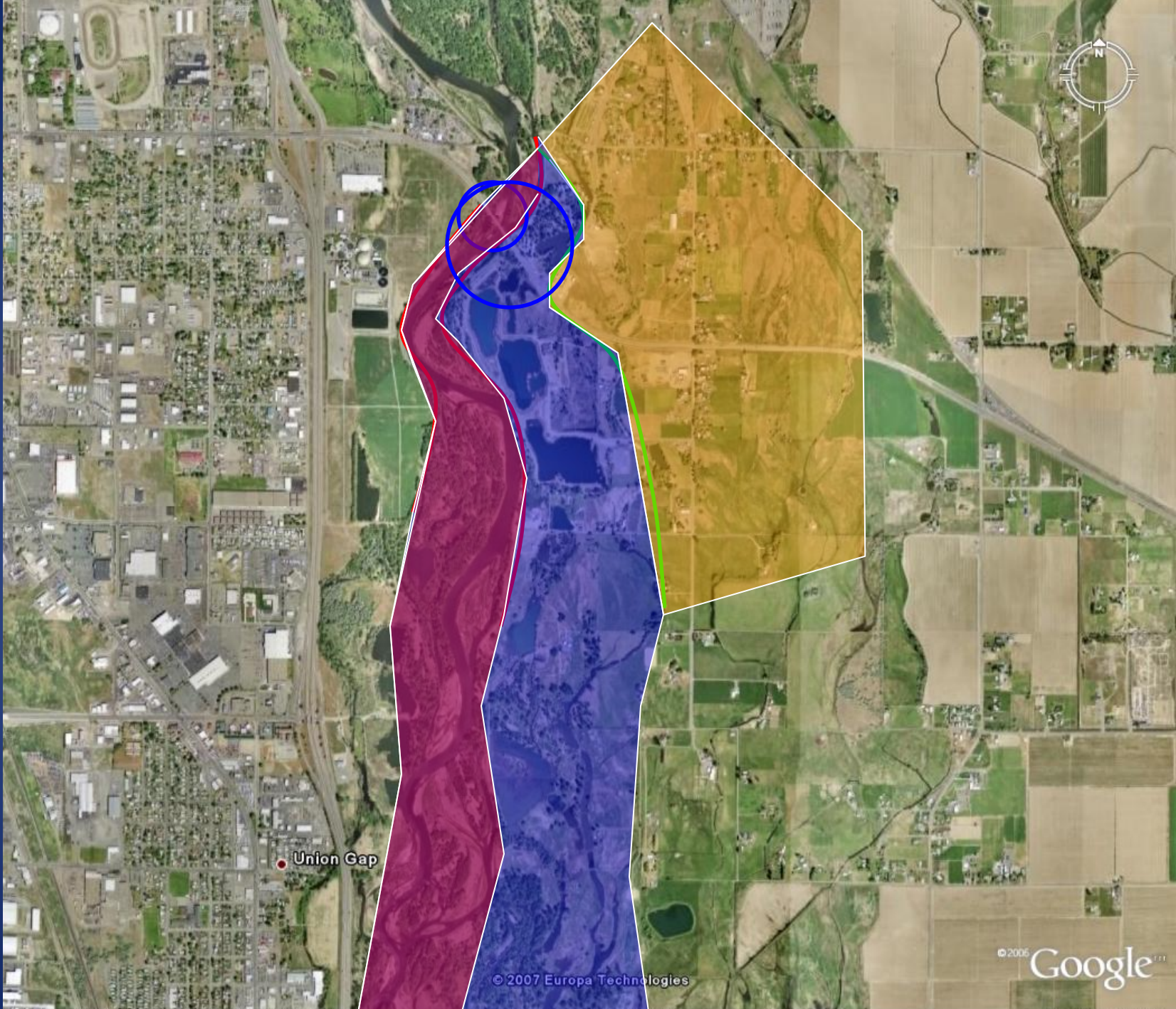
- Act as Lead Entities for SRFB Funds (PCSRF)
- Maintain Implementation Schedules that identify specific actions
- Work with partners in basin to develop support and funding for priorities in our plans
- Build from existing funding sources & capacity

# Key Needs

- Passage in the Upper Yakima
- Improve outmigrant survival
  - Yakima Basin flow management
  - Predation issues
- Habitat & flow work in key tribs
- Floodplain restoration
- Kelt reconditioning







Union Gap

© 2007 Europa Technologies

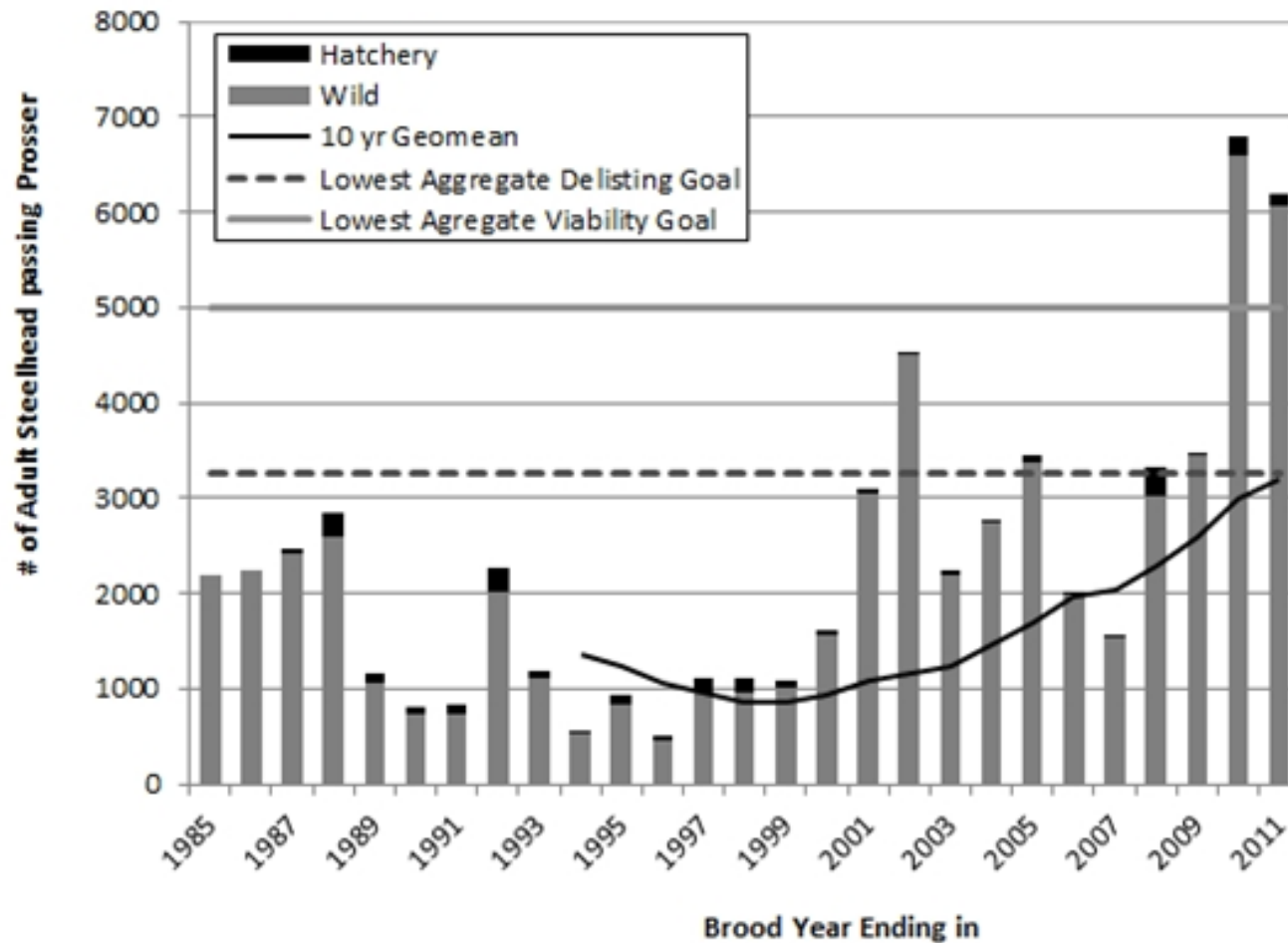
© 2005 Google

Pointer 46°34'15.02" N 120°27'24.86" W elev 912 ft

Streaming 100%

Eye alt 15010 ft

# Real Progress



# Washington State Governor's Salmon Recovery Office: Megan Duffy

- Created by state legislature in 1999
- Charged with:
  - developing and maintaining a statewide salmon recovery strategy
  - supporting development and implementation of regional recovery plans
  - working with regional salmon recovery organizations on salmon recovery issues in order to ensure a coordinated and consistent statewide approach to salmon recovery
  - Working with tribes, state, federal and local agencies on issues related to the state salmon recovery strategy

# In Summary

- Significant opportunity to demonstrate progress
  - Possibility of Mid-C Steelhead delisting
- Coordinated and collaborative effort supported by science
  - Local priorities and science
  - Mid-C Forum and Mid-C Technical Teams
- Opportunity to be highly effective through partnership
  - NPCC amendment process
  - Funding strategies

