

Bruce A. Measure
Chair
Montana

Rhonda Whiting
Montana

W. Bill Booth
Idaho

James A. Yost
Idaho



Tom Karier
Washington

Phil Rockefeller
Washington

Bill Bradbury
Oregon

Joan M. Dukes
Oregon

June 30th, 2011

MEMORANDUM

TO: Council members

FROM: Lynn Palensky

SUBJECT: Briefing on Lamprey and White Sturgeon: follow-up RME/AP activities

In the final programmatic recommendations for sturgeon and lamprey projects, the council called for follow-up documents (described below) to be developed during the funding period. Representatives from the groups working on the documents will give a presentation to the committee on their process and anticipated schedule for completion:

Presenting on Sturgeon: Blaine Parker (CRITFC) Tom Rien (ODFW), Brad James (WDFW)
Presenting on Lamprey: Christina Luzier (USFWS) and Dave Ward (CBFWA)

Programmatic description of the follow-up documents to be developed over two years:

Lamprey: the document is a synthesis report on the lamprey efforts under the program including: *a summary of results and conclusions on the data gathered so far about the status and trends of lamprey populations, limiting factors, and critical uncertainties and risks. The report should also prioritize actions based on these conclusions. Critical questions to analyze include the value of tributary habitat projects in helping to improve lamprey returns, whether mainstem dam passage is the key limiting factor, and the relative role of other factors such as ocean conditions and toxic contaminants.*

Sturgeon: a comprehensive management plan developed through a collaborative effort involving currently funded projects to include: *a description of what we know and do not know about sturgeon life history, status, limiting factors, and current and past programs and activities. The plan should also describe results and conclusions from past work and the extent to which both previous and future work has or will benefit sturgeon and other fish and wildlife. Within the planning area from the mouth of the Columbia upstream to Priest Rapids on the mainstem and up to Lower Granite Dam on the Snake River, this comprehensive management plan should describe for sturgeon a comprehensive and integrated vision, goals, critical uncertainties and risks related to uncertainties, research needs, strategies, and related provisions. The plan should also include summary information for sturgeon areas above Priest Rapids and Lower Granite.*

w:\lp\packet materials\2011\july\sturgeonlamprey.docx

Comprehensive Management Planning for White Sturgeon



Tom Rien - ODFW

Blaine Parker - CRITFC

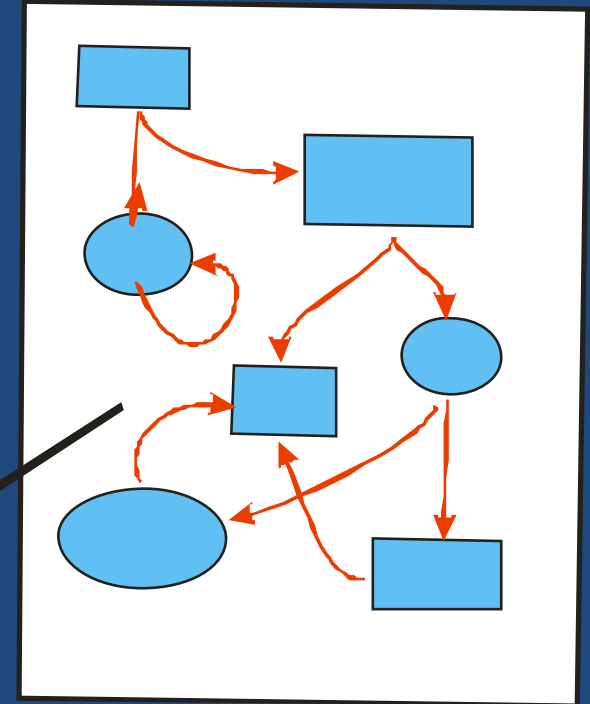
Brad James - WDFW



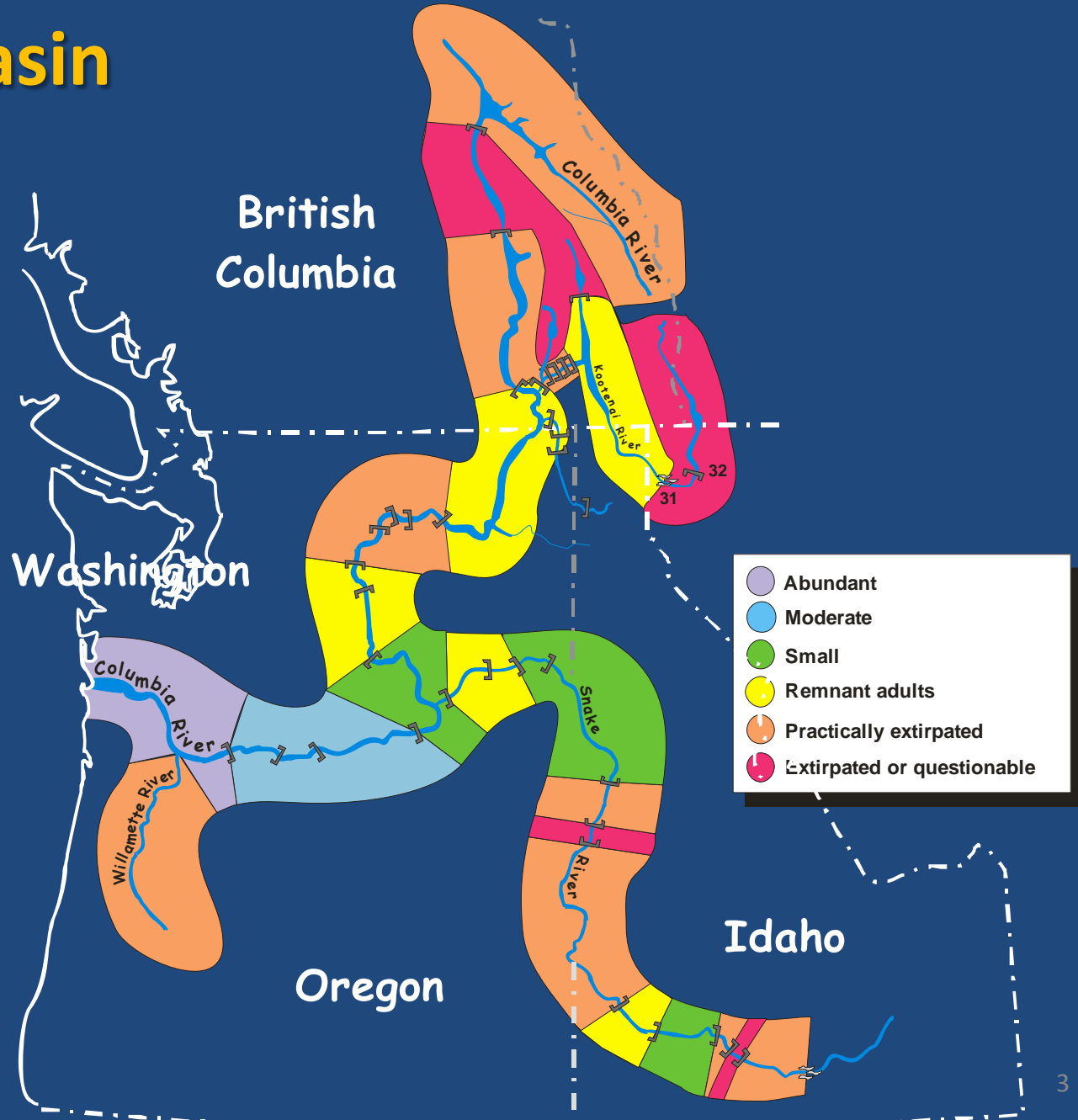
Presentation to the Fish and Wildlife Committee
of the Northwest Power and Conservation Council
July 12, 2011

Planning Scope

- Basin-wide Framework
- Strategic Plans (by area)
- Implementation Schedules



Columbia Basin White Sturgeon Status



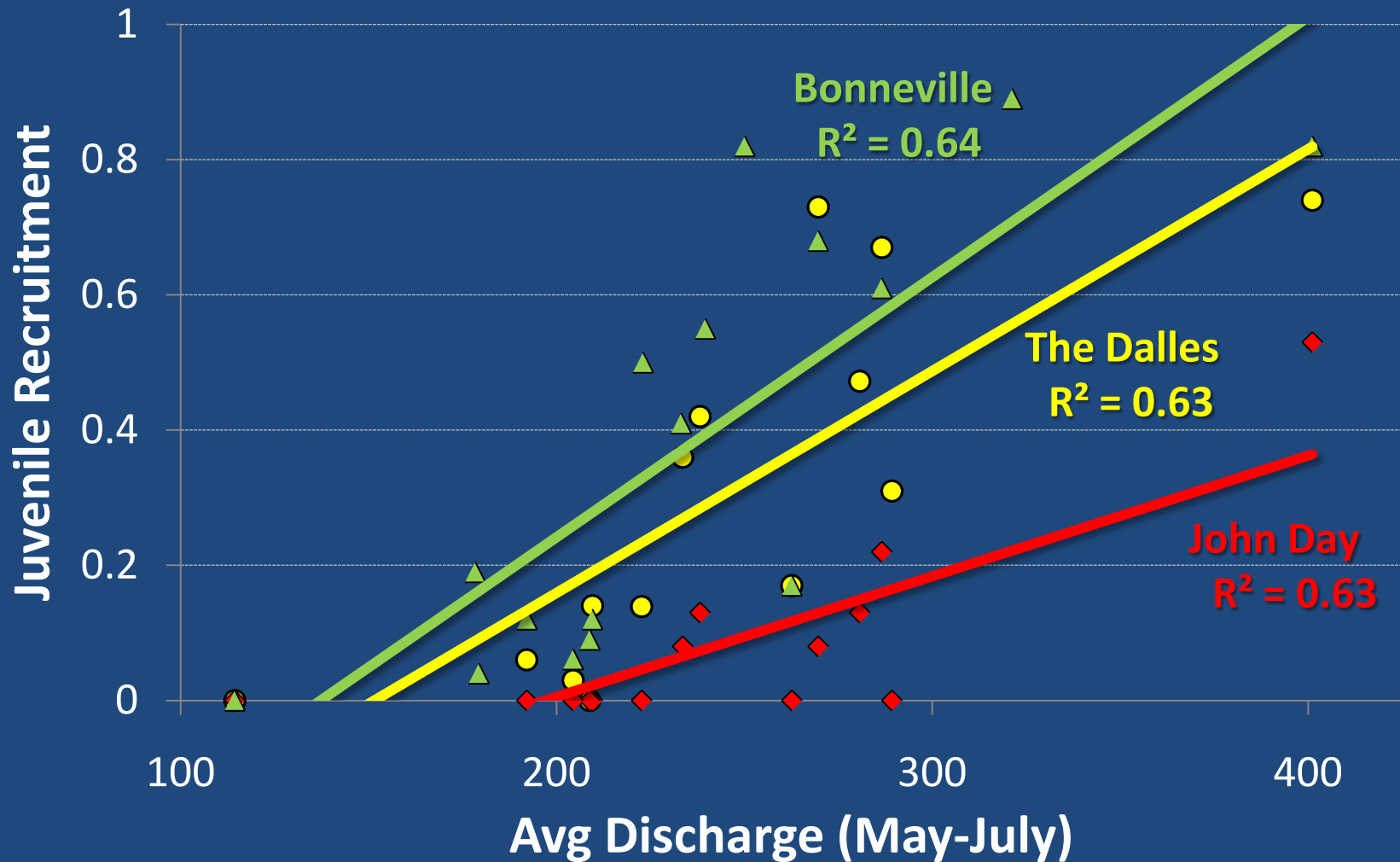
White Sturgeon Planning Highlights

1983-2009

- ✓ White Sturgeon Research Needs
- ✓ PSMFC Framework
- ✓ Kootenai Recovery Plan
- ✓ Upper Columbia Recovery Initiative
- ✓ Subbasin Plans
- ✓ NPT Lower Snake
- ✓ IPC FERC
- ✓ IDFG
- ✓ Upper Mid-C FERC Planning
- ✓ NPCC F&W Program

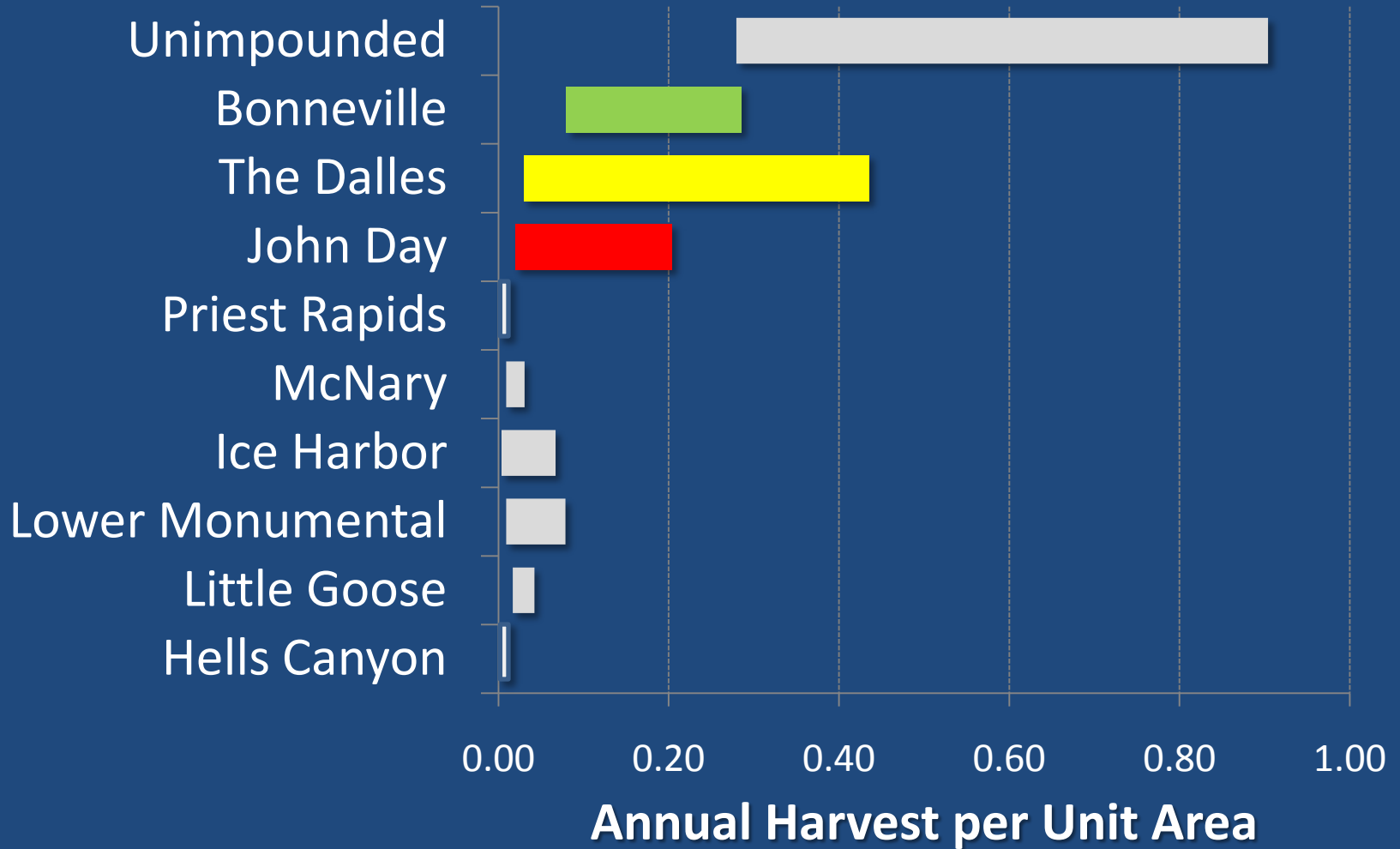


Flow versus Recruitment

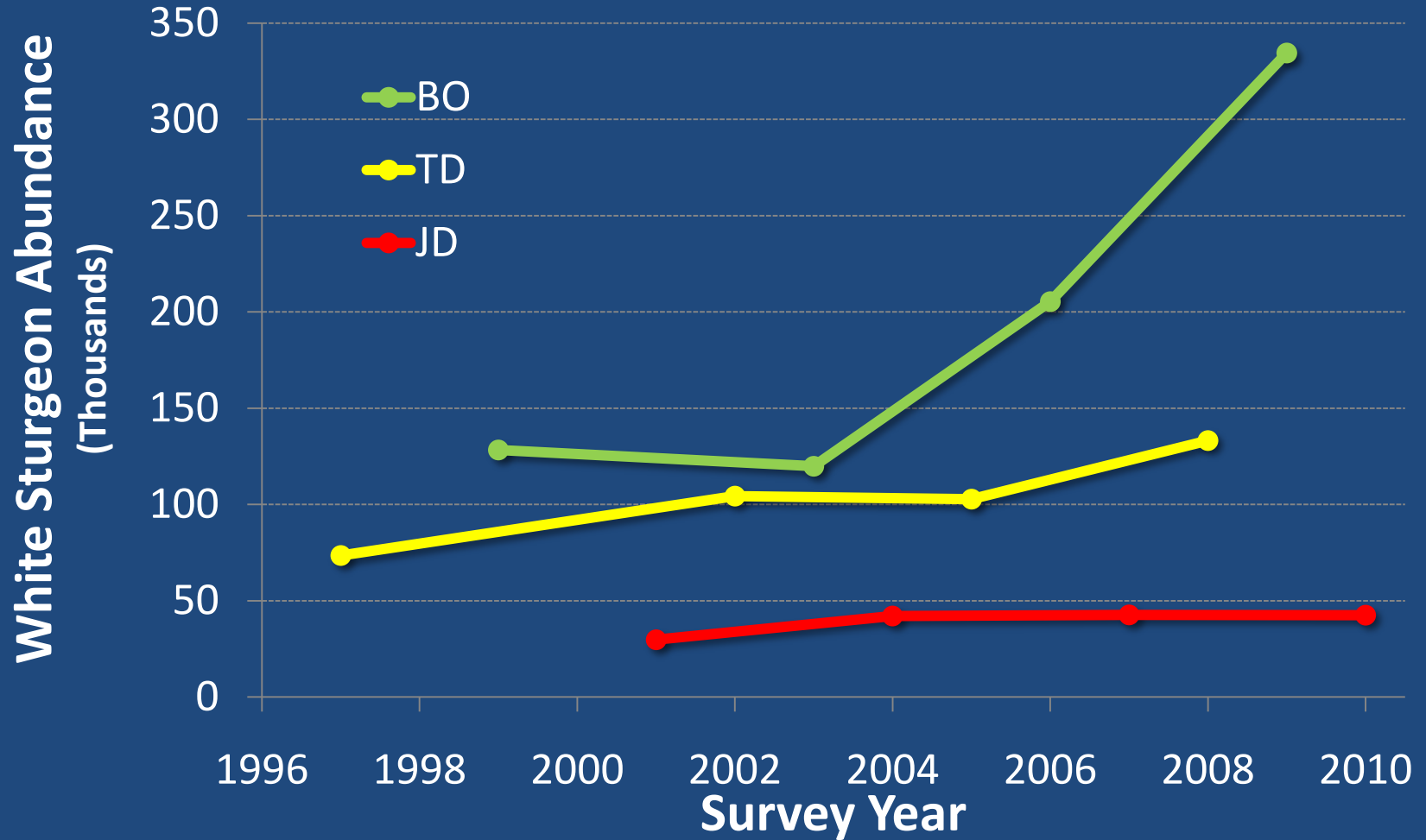


Current Mitigation Strategy

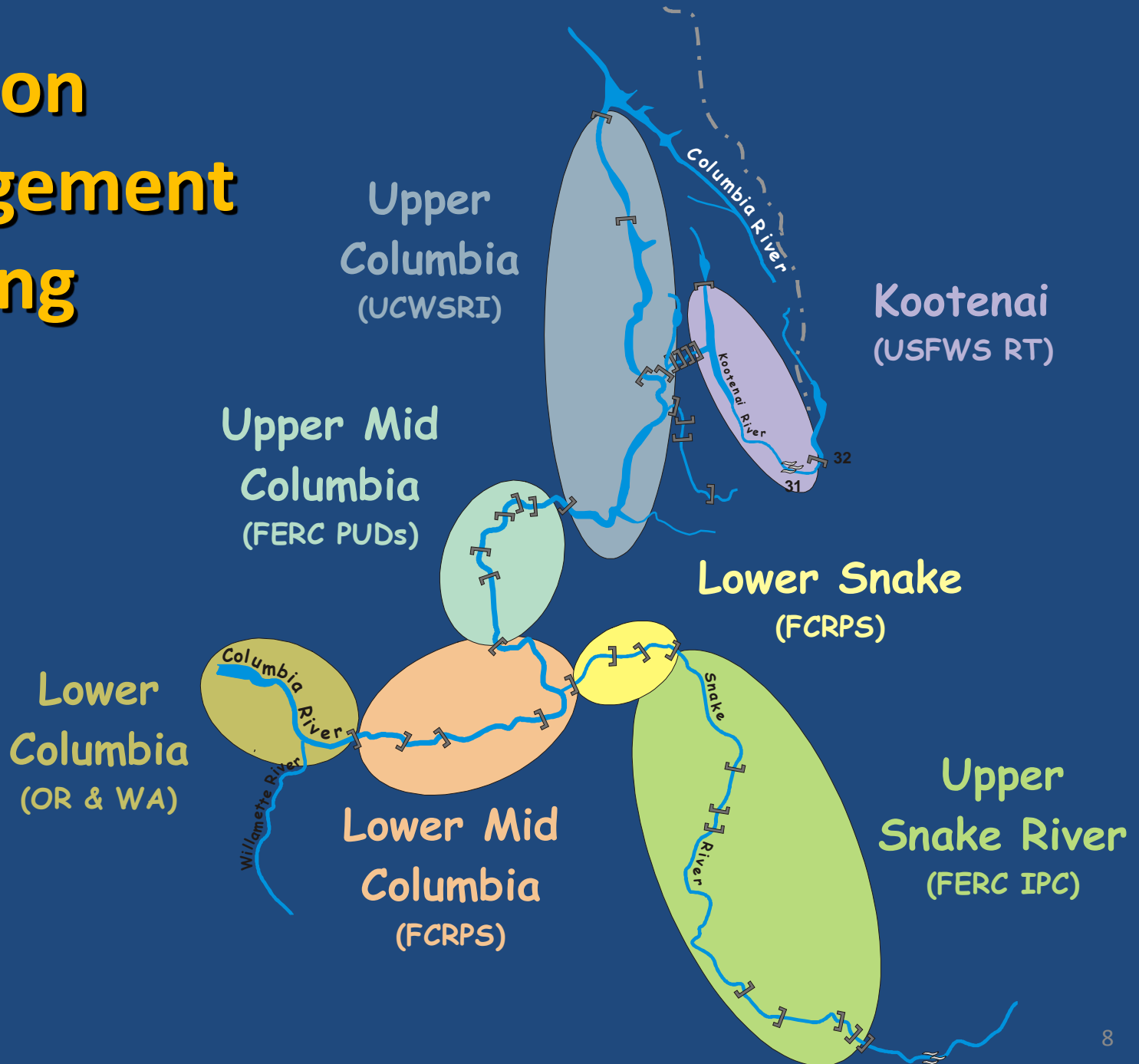
Optimize Production



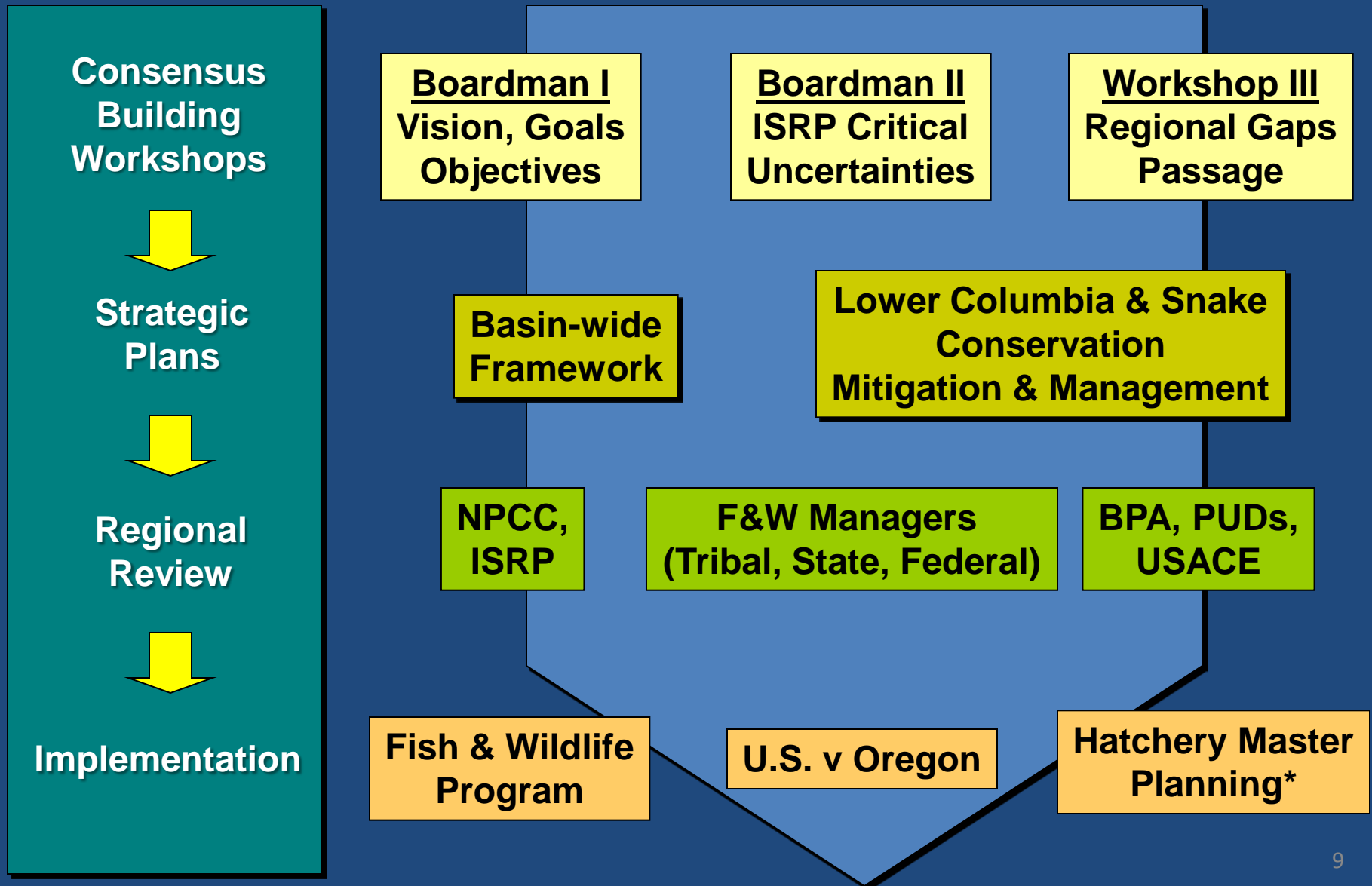
Population Trends



Sturgeon Management Planning Units



Comprehensive Sturgeon Planning



Schedule

- 2009** • Boardman I (12/09)
- 2010** • NPCC & ISRP Categorical Review
- 2011** • Boardman II (1/11)
 - Regional Review of Framework Elements
- 2012** • Workshop III (1/12)
 - Further Review of Framework Drafts
 - Comprehensive Framework to NPCC & ISRP (7/12)
 - Lower Mid -C & Snake Strategic Plan
 - Develop Implementation Schedule

Columbia River Basin Lamprey Technical Workgroup



Composition

Scientists with lamprey technical expertise

Also - contract officers, CBFWA staff, Council staff



Columbia River Basin Lamprey Technical Workgroup



Purpose

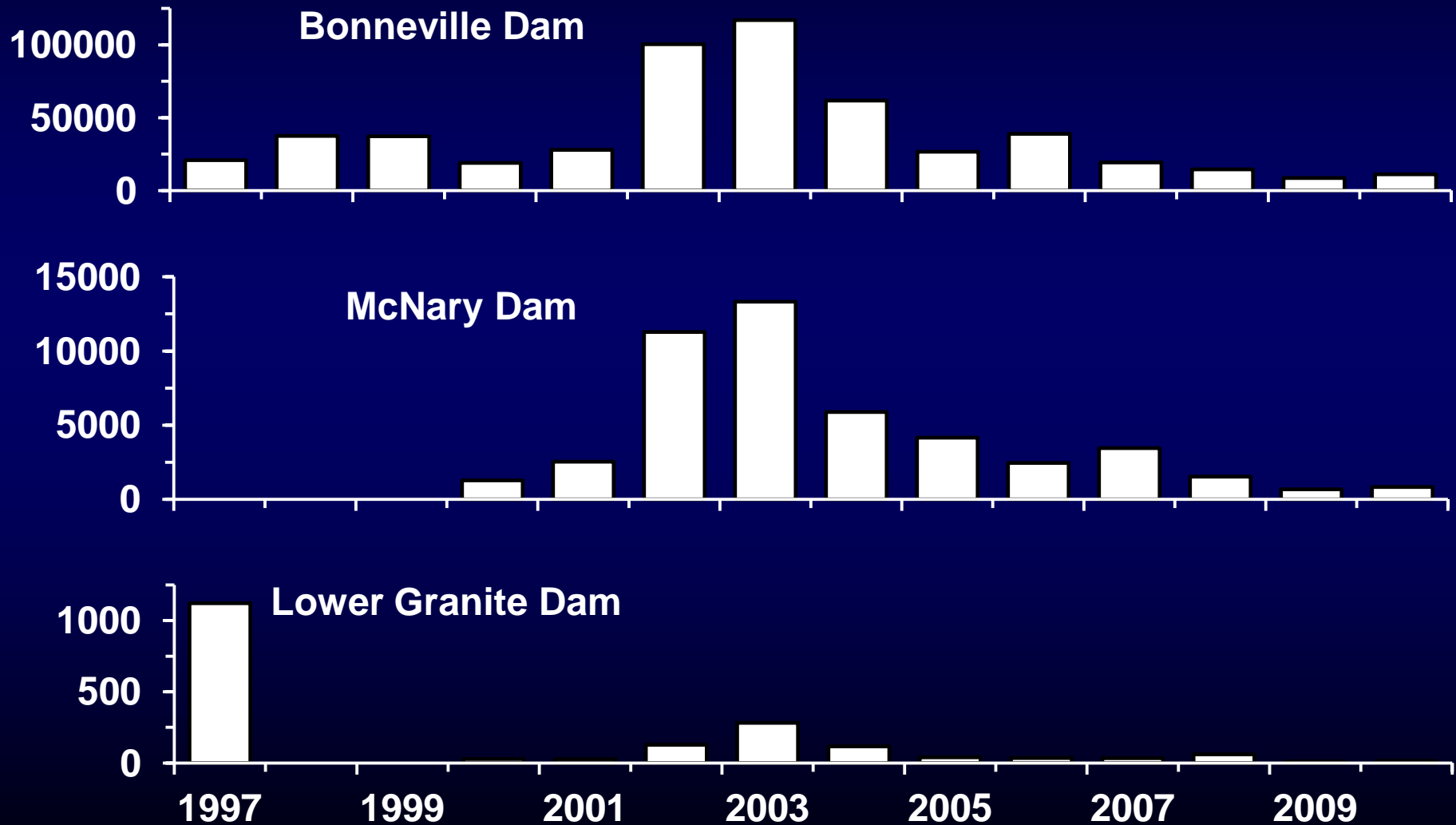
Provide technical review, guidance,
and recommendations

Critical uncertainties regarding lamprey
conservation

Provide a forum for lamprey-related concerns

Disseminate technical information

Columbia River Basin Lamprey Technical Workgroup



Columbia River Basin Lamprey Technical Workgroup



1994-026-00

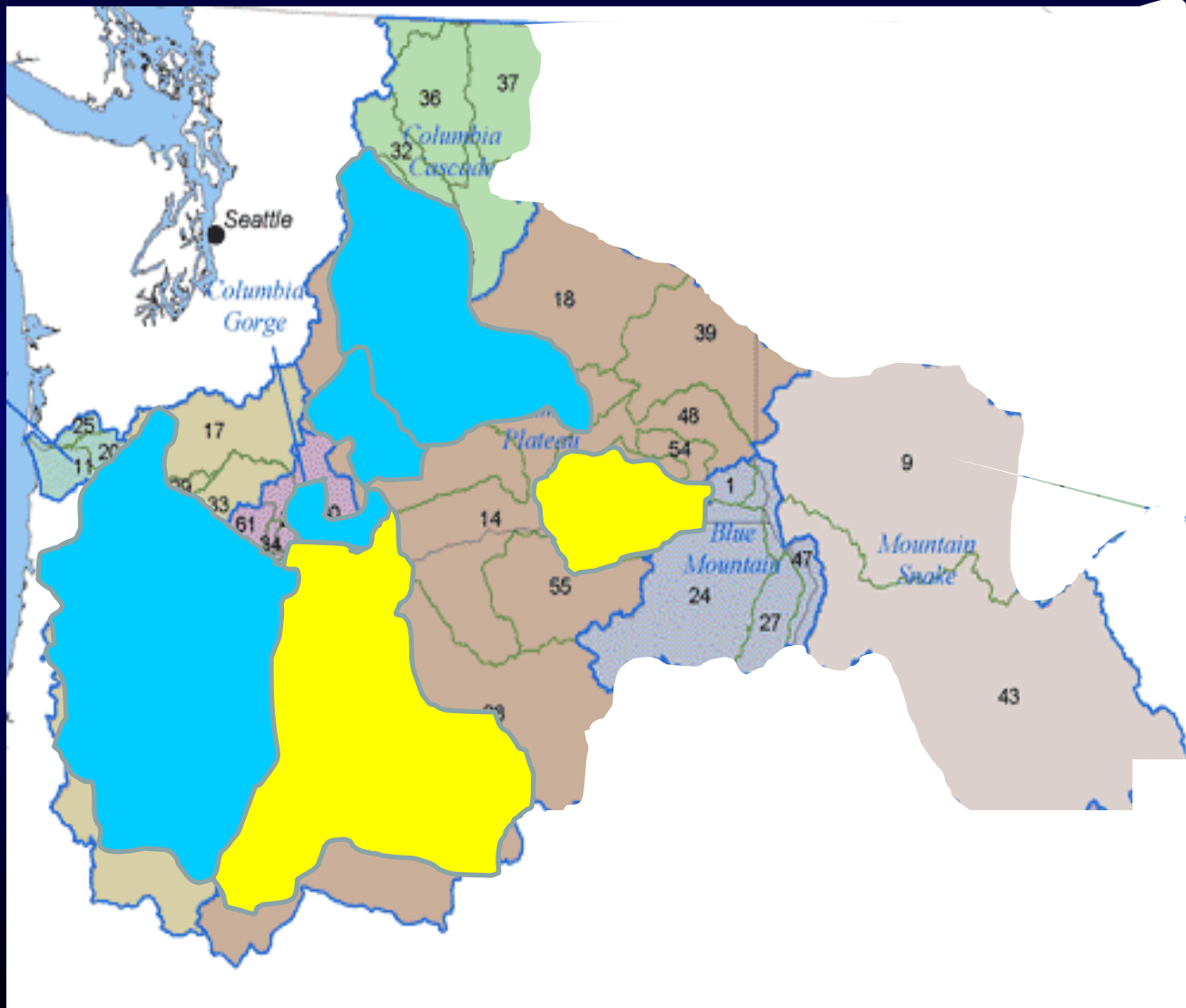
2002-016-00

2007-007-00

2008-524-00

2008-470-00

2008-308-00



Columbia River Basin Lamprey Technical Workgroup



ISRP COMMENTS

Want synthesis of results from lamprey projects

General conclusions

Limiting factors

Coordination

Goals

Status

Raised questions about status and threats

Suggested LTWG to develop basinwide synthesis report

Columbia River Basin

Lamprey Technical Workgroup



SYNTHESIS REPORT

(Would expand on information below)

- 1994-026-00 - Translocation results;
Low-elevation passage impediments;
Genetics
- 2002-016-00 - Status in Deschutes;
Habitat use (more in Deschutes than tribs)
- 2007-007-00 -
- 2008-524-00 - Preliminary habitat use information
- 2008-470-00 - First surveys in Klickitat
- 2008-308-00 -

Columbia River Basin

Lamprey Technical Workgroup



SYNTHESIS REPORT

Collaboration with USFWS and CRITFC

USFWS – Pacific Lamprey Assessment and Template for Conservation Measures – Includes:

1. Status assessment (4th code HUC for Lower 48)
2. Threats assessment
3. Relative risk assessment
4. Ongoing and needed actions and RM&E

CRITFC – Pacific Lamprey Tribal Restoration Plan
– Includes:

1. 10-year plan for restoring Pacific lamprey
2. Actions for improving passage/survival, habitat; translocation; RM&E

Columbia River Basin Lamprey Technical Workgroup



SYNTHESIS REPORT

Critical Uncertainties – Done (2005)

Critical Uncertainties Progress Report - 2011

ISRP Synthesis Report

Translocation Review Paper – Done (2011)

Critical Uncertainties Update -2011

Lamprey Monitoring Strategy - 2011

Columbia River Basin Lamprey Technical Workgroup



SYNTHESIS REPORT

Very Comprehensive

Timeline

Draft by fall 2011 LTWG meeting

Final product sometime after

All drafts and products available on
LTWG website:

http://www.cbfwa.org/committee_ltw.cfm

Happy to provide update in fall