

W. Bill Booth
Chair
Idaho

James A. Yost
Idaho

Tom Karier
Washington

Dick Wallace
Washington



Bruce A. Measure
Vice-Chair
Montana

Rhonda Whiting
Montana

Melinda S. Eden
Oregon

Joan M. Dukes
Oregon

July 2, 2009

MEMORANDUM

TO: Council members

FROM: Nancy Leonard, Wildlife and Ecosystem Monitoring and Evaluation Manager
Tony Grover, Fish and Wildlife Division Director

SUBJECT: Anadromous Subbasins Monitoring and Evaluation Workshop

Representatives from Bonneville Power Administration, Columbia Basin Fish and Wildlife Authority, National Oceanic and Atmospheric Administration and Council staff will provide an update on the Anadromous Subbasins Monitoring and Evaluation Workshop. Topics to be covered include: contract and budget status; information sessions held in the region in preparation for the upcoming workshops; and update on timeline. The most current timeline is attached.



Anadromous Subbasins Monitoring and Evaluation Workshop

Coordinated Basinwide Strategy:

- population status and trend monitoring
- habitat and hatchery action effectiveness



Facilitation

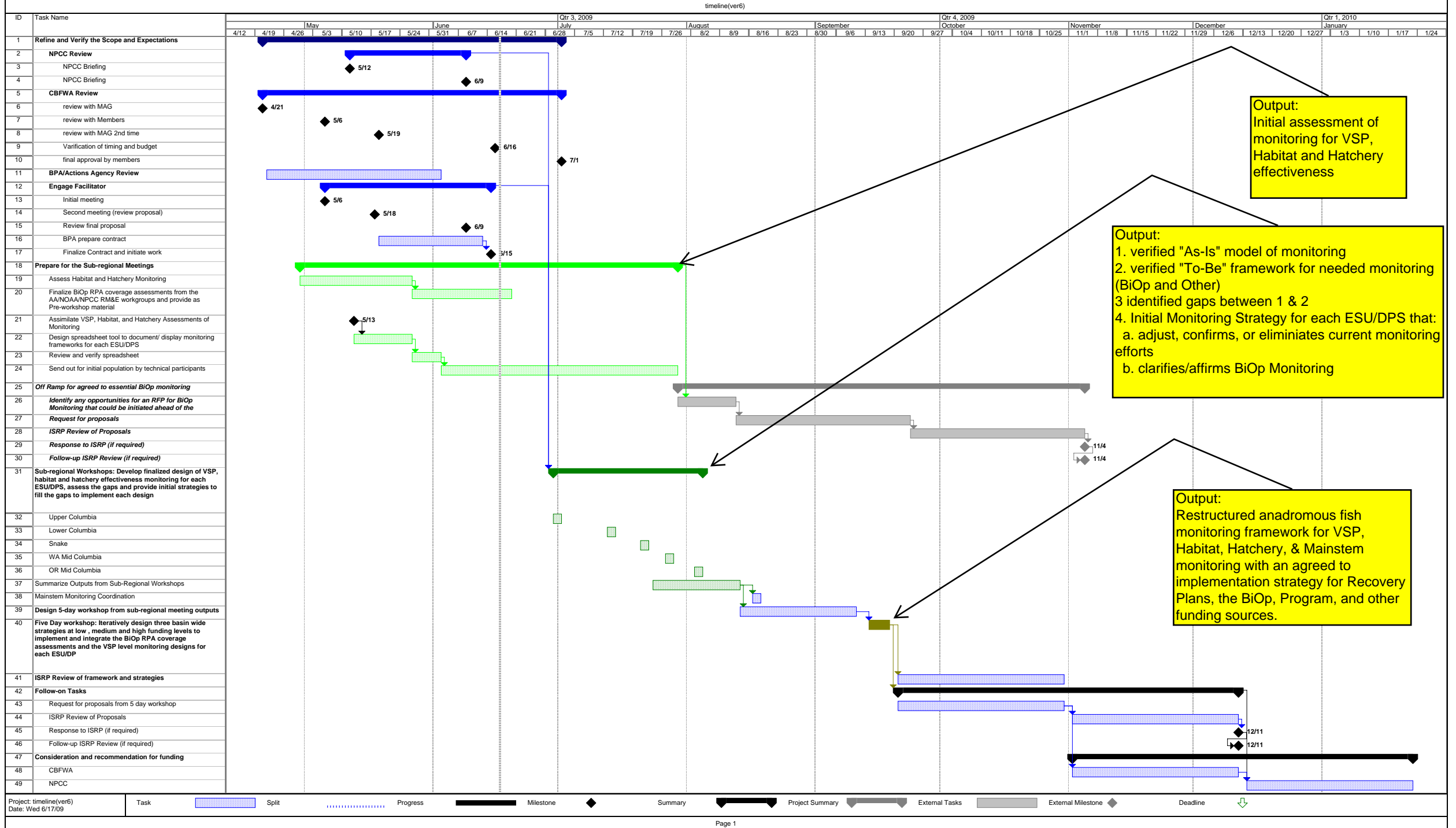
- Contract with Oregon Concensus, National Policy Consensus Center, Portland State University's Hatfield School of Government
- Duration: Jun 15, 2009 to Dec 31, 2009
- Budget: \$73,843
- Deliverable: Planning for, and facilitation of, regional workshop to develop recommendations for comprehensive monitoring strategy for anadromous fish.



Fish and Wildlife Managers Participation

- Contract with CBFWA
- Duration: Apr 1, 2009 to Mar 31, 2010
- Budget: \$501,601
- Deliverable: prioritized list of projects that addresses FCRPS BiOp and Program anadromous fish monitoring responsibilities that is within budget and agreed to by fish and wildlife managers.

Attachment: Anadromous Subbasins Monitoring and Evaluation Workshop - July 2009 Council Meeting



Output:
Initial assessment of monitoring for VSP, Habitat and Hatchery effectiveness

Output:
 1. verified "As-Is" model of monitoring
 2. verified "To-Be" framework for needed monitoring (BiOp and Other)
 3. identified gaps between 1 & 2
 4. Initial Monitoring Strategy for each ESU/DPS that:
 a. adjust, confirms, or eliminates current monitoring efforts
 b. clarifies/affirms BiOp Monitoring

Output:
Restructured anadromous fish monitoring framework for VSP, Habitat, Hatchery, & Mainstem monitoring with an agreed to implementation strategy for Recovery Plans, the BiOp, Program, and other funding sources.