

The Idaho Update – recent trends in salmon and steelhead abundance and outlook on 2009 adult returns



Chinook



sockeye



steelhead

Paul Kline
Idaho Department of Fish and Game
March 10, 2009



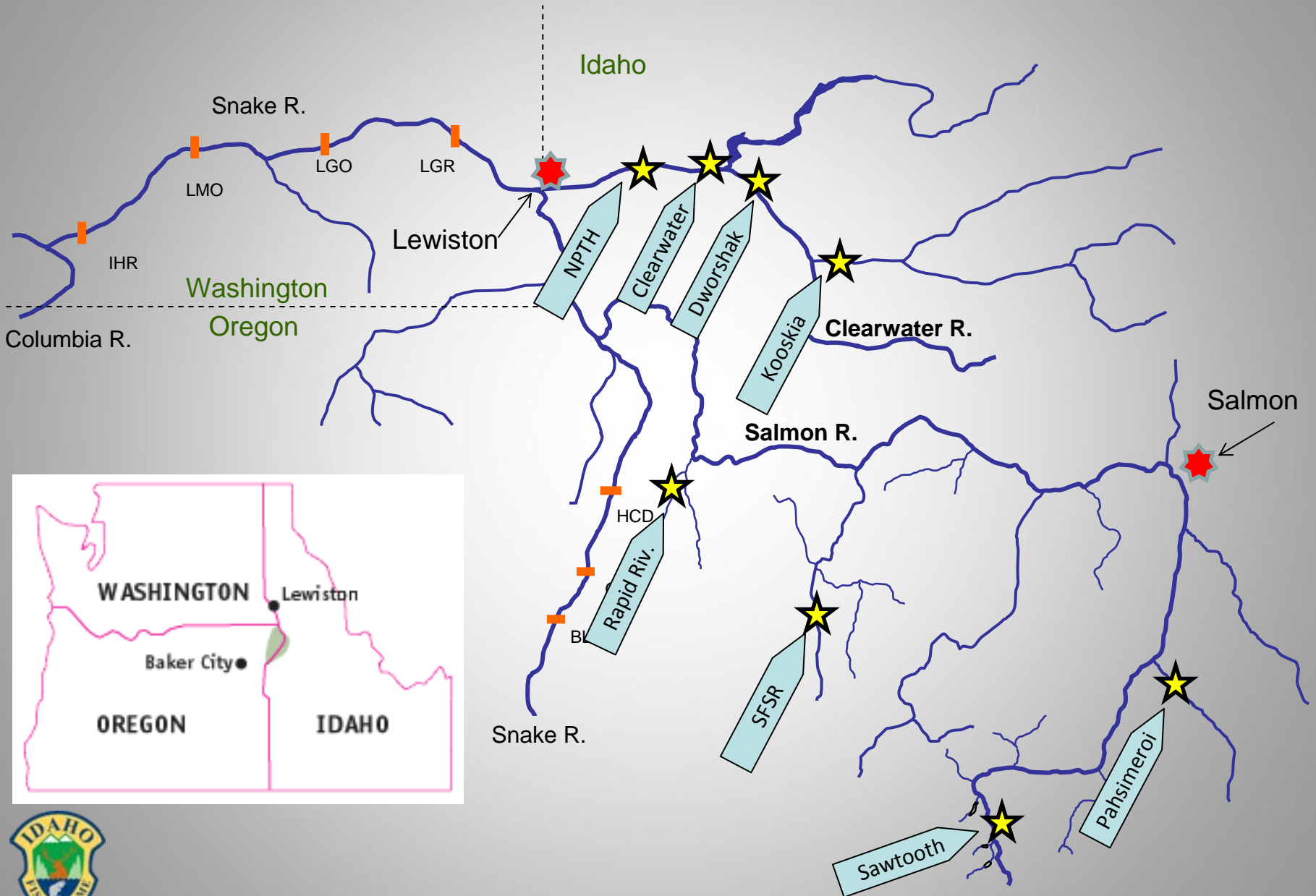
The Idaho Update – recent trends in salmon and steelhead abundance and outlook on 2009 adult returns

Outline:

1. Time-series return information for Snake River sp/su Chinook, fall Chinook, sockeye, and steelhead
2. Snake River sockeye salmon program update
3. 2009 sp/su Chinook, sockeye and steelhead forecasts (Snake River)

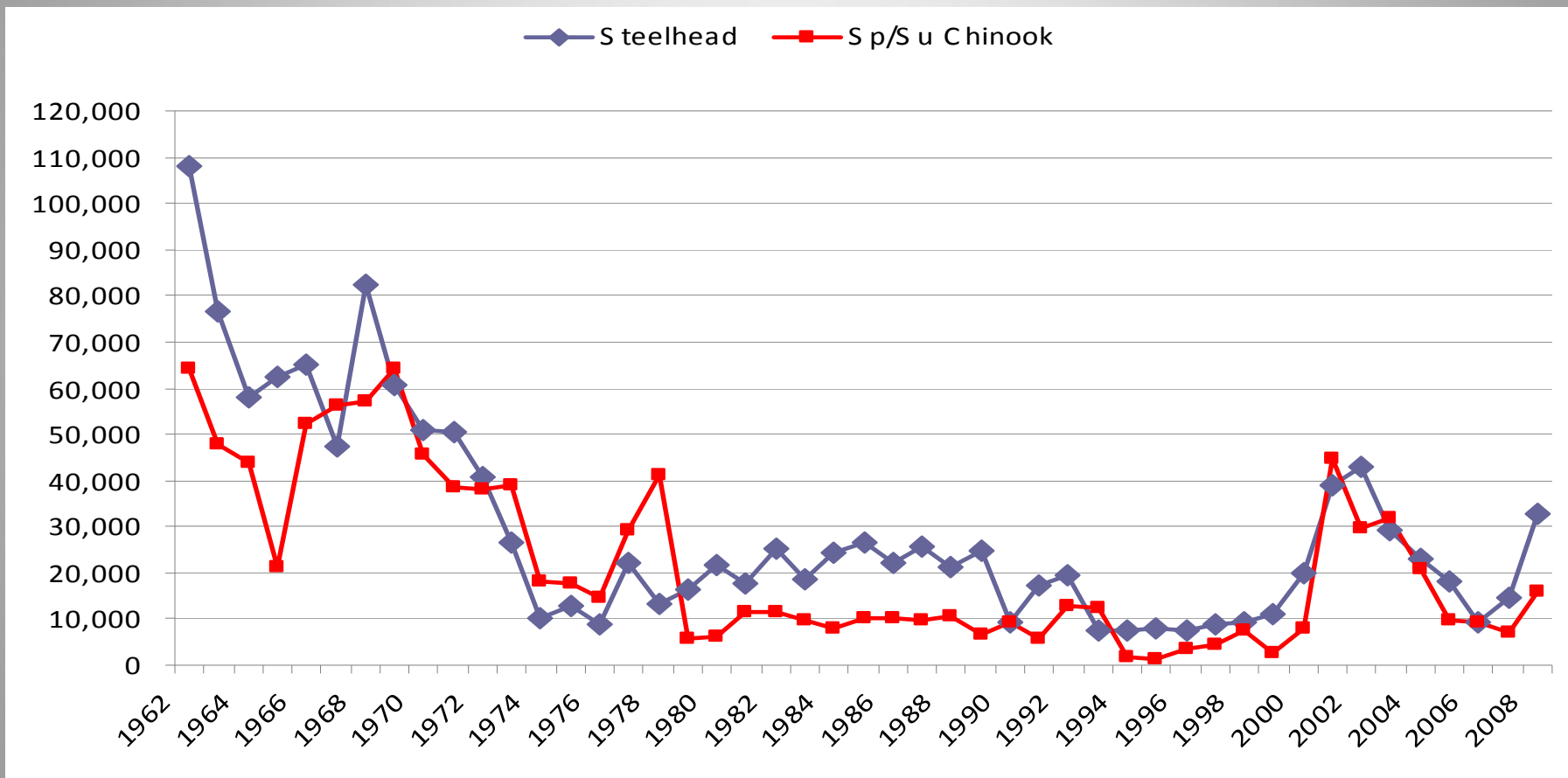


Snake, Clearwater, and Salmon River Orientation



Adult returns of wild/natural spring/summer Chinook salmon and steelhead to the uppermost dam on the Snake River

(Ice Harbor 1962 – 1968; Lower Monumental 1969; Little Goose 1970 – 1974; Lower Granite 1975 -)¹

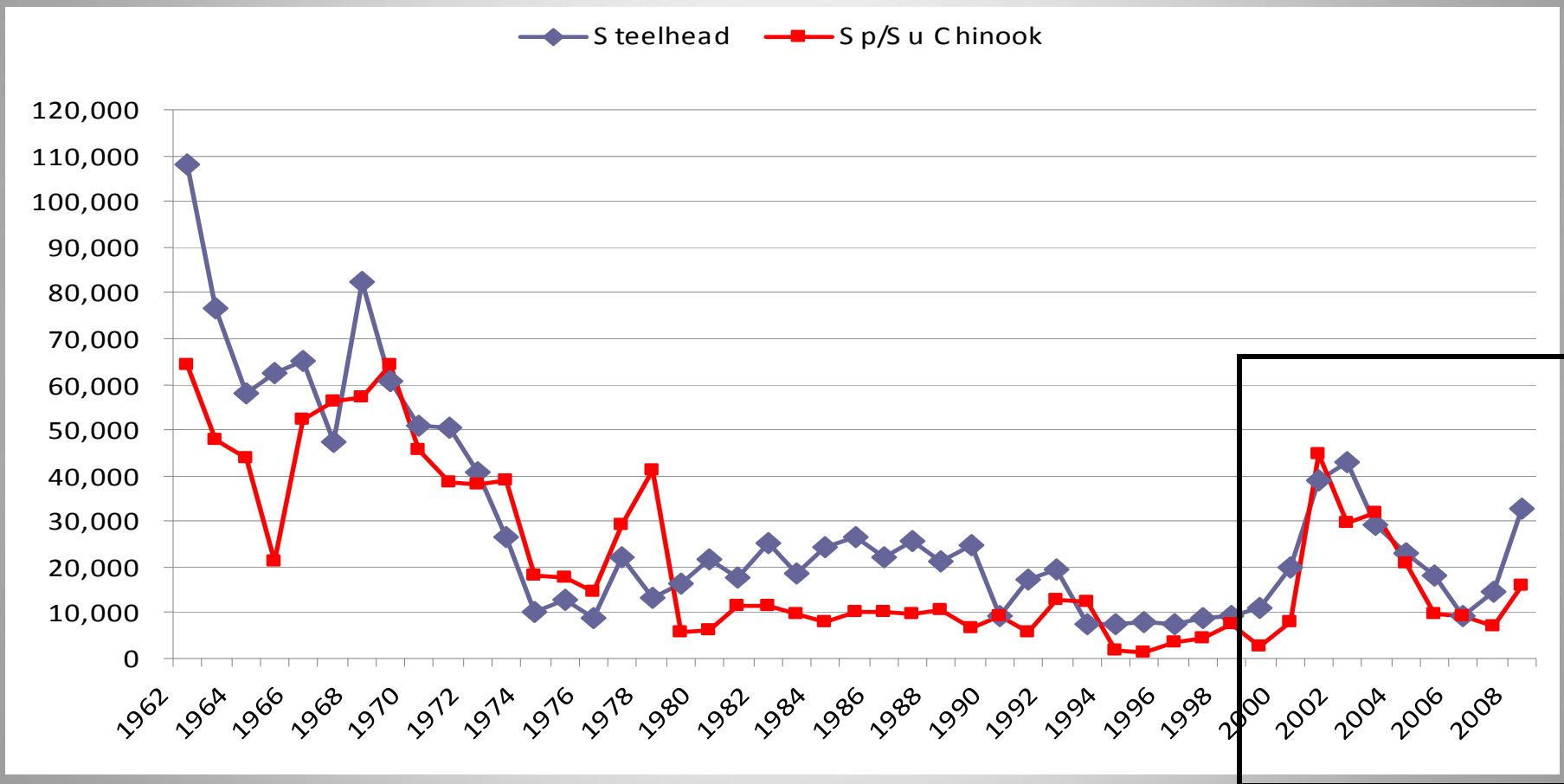


¹ Run size information adapted from the Fish Passage Center (www.fpc.org).



Adult returns of wild/natural spring/summer Chinook salmon and steelhead to the uppermost dam on the Snake River

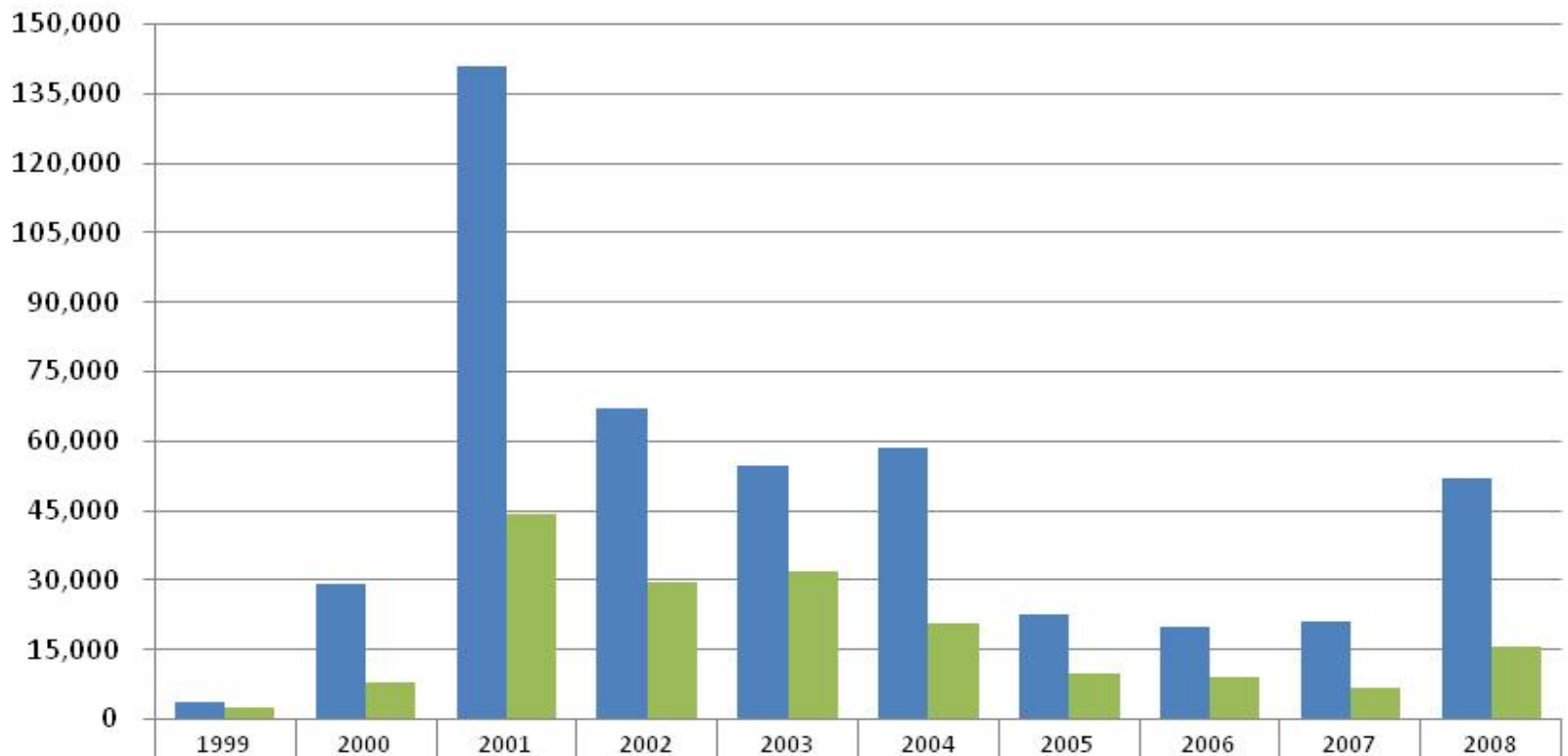
(Ice Harbor 1962 – 1968; Lower Monumental 1969; Little Goose 1970 – 1974; Lower Granite 1975 -)¹



¹ Run size information adapted from the Fish Passage Center (www.fpc.org).



Adult returns of wild/natural- and hatchery-origin spring/summer Chinook salmon to Lower Granite Dam 1999 - 2008¹

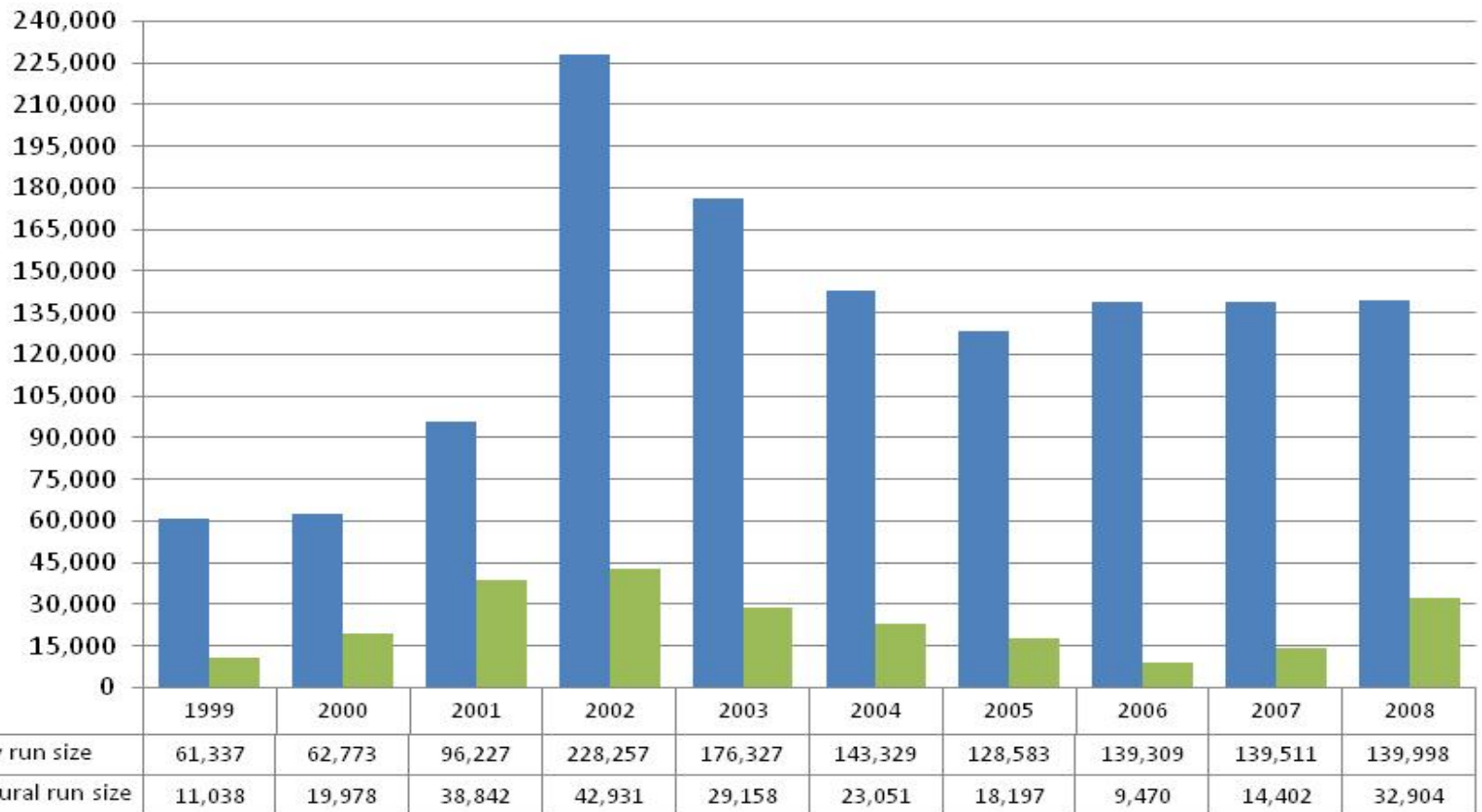


■ Hatchery run size	3,703	29,568	141,121	67,312	54,951	58,624	22,902	20,248	21,445	52,021
■ Wild/natural run size	2,853	8,187	44,572	29,872	32,080	20,967	9,862	9,340	6,903	15,763



¹ Hatchery- and Wild/natural-origin run size information adapted from the Fish Passage Center (www.fpc.org).

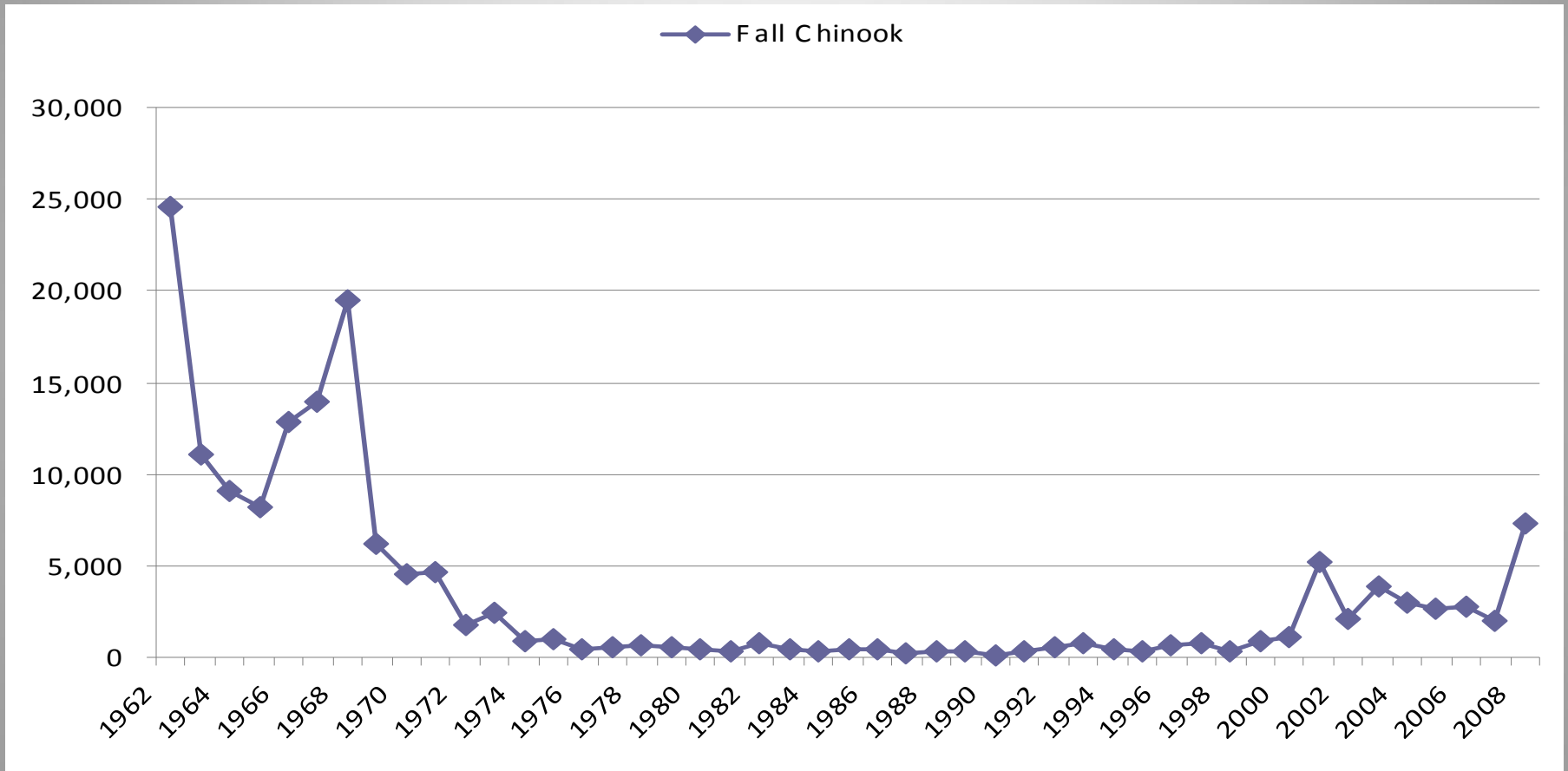
Adult returns of wild/natural- and hatchery-origin Steelhead to Lower Granite Dam 1999 - 2008¹



¹ Hatchery- and Wild/natural-origin run size information adapted from the Fish Passage Center (www.fpc.org).

Adult returns of wild/natural fall Chinook salmon to the uppermost dam on the Snake River

(Ice Harbor 1962 – 1968; Lower Monumental 1969; Little Goose 1970 – 1974; Lower Granite 1975 -)¹

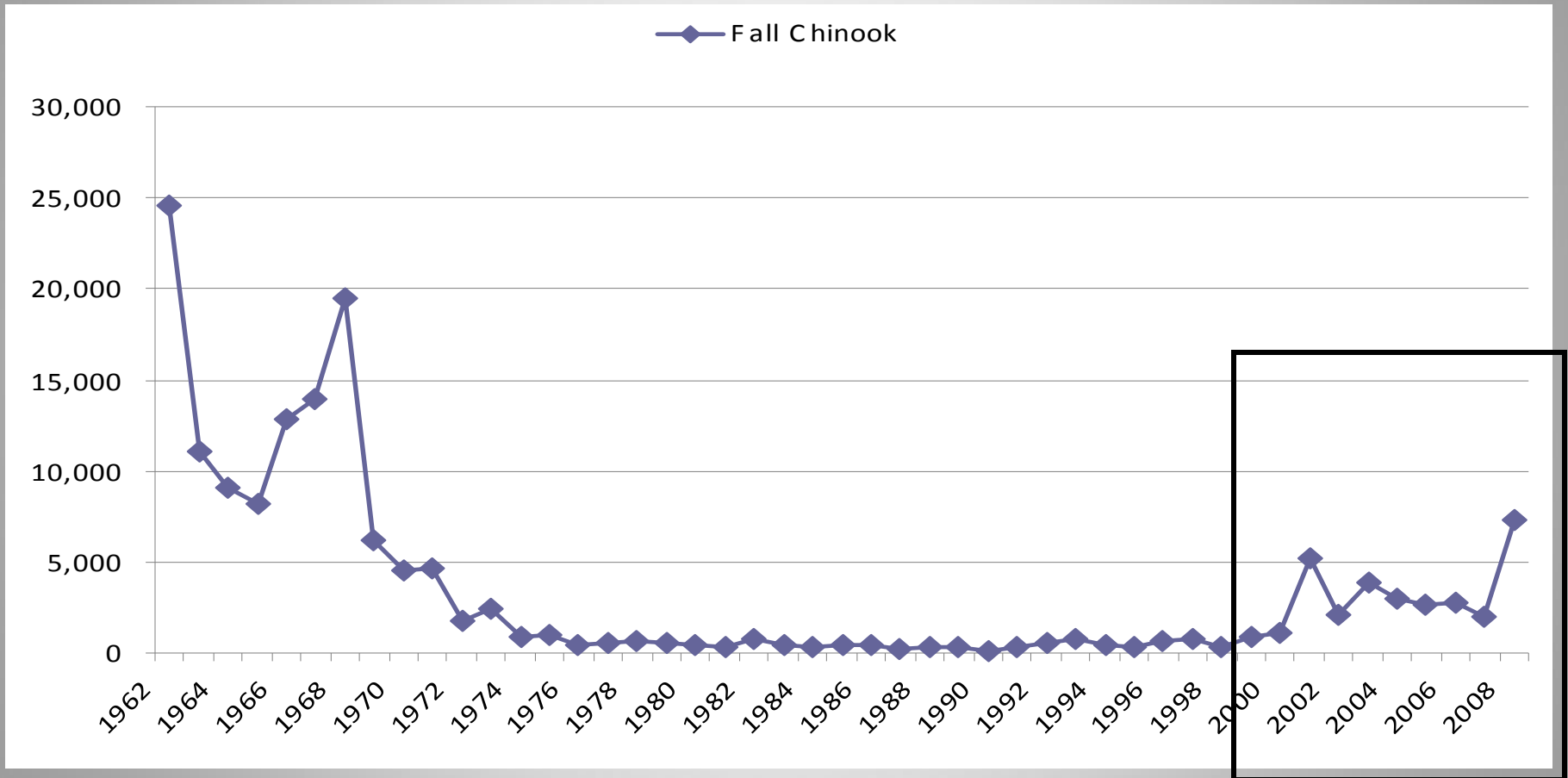


¹ Run size information adapted from the Fish Passage Center (www.fpc.org).



Adult returns of wild/natural fall Chinook salmon to the uppermost dam on the Snake River

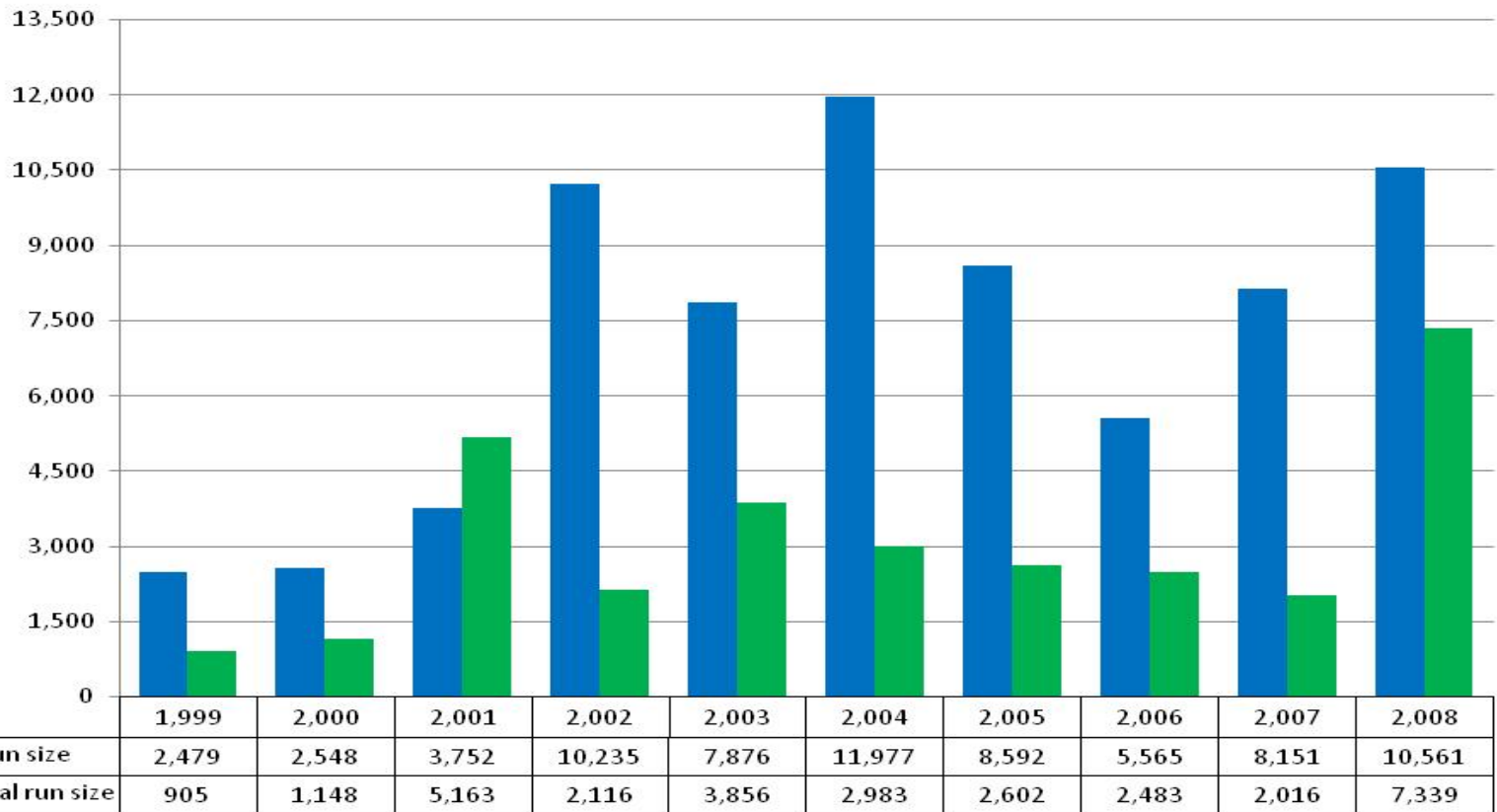
(Ice Harbor 1962 – 1968; Lower Monumental 1969; Little Goose 1970 – 1974; Lower Granite 1975 -)¹



¹ Run size information adapted from the Fish Passage Center (www.fpc.org).



Adult returns of wild/natural and hatchery-origin fall Chinook salmon to Lower Granite Dam 1999 - 2008

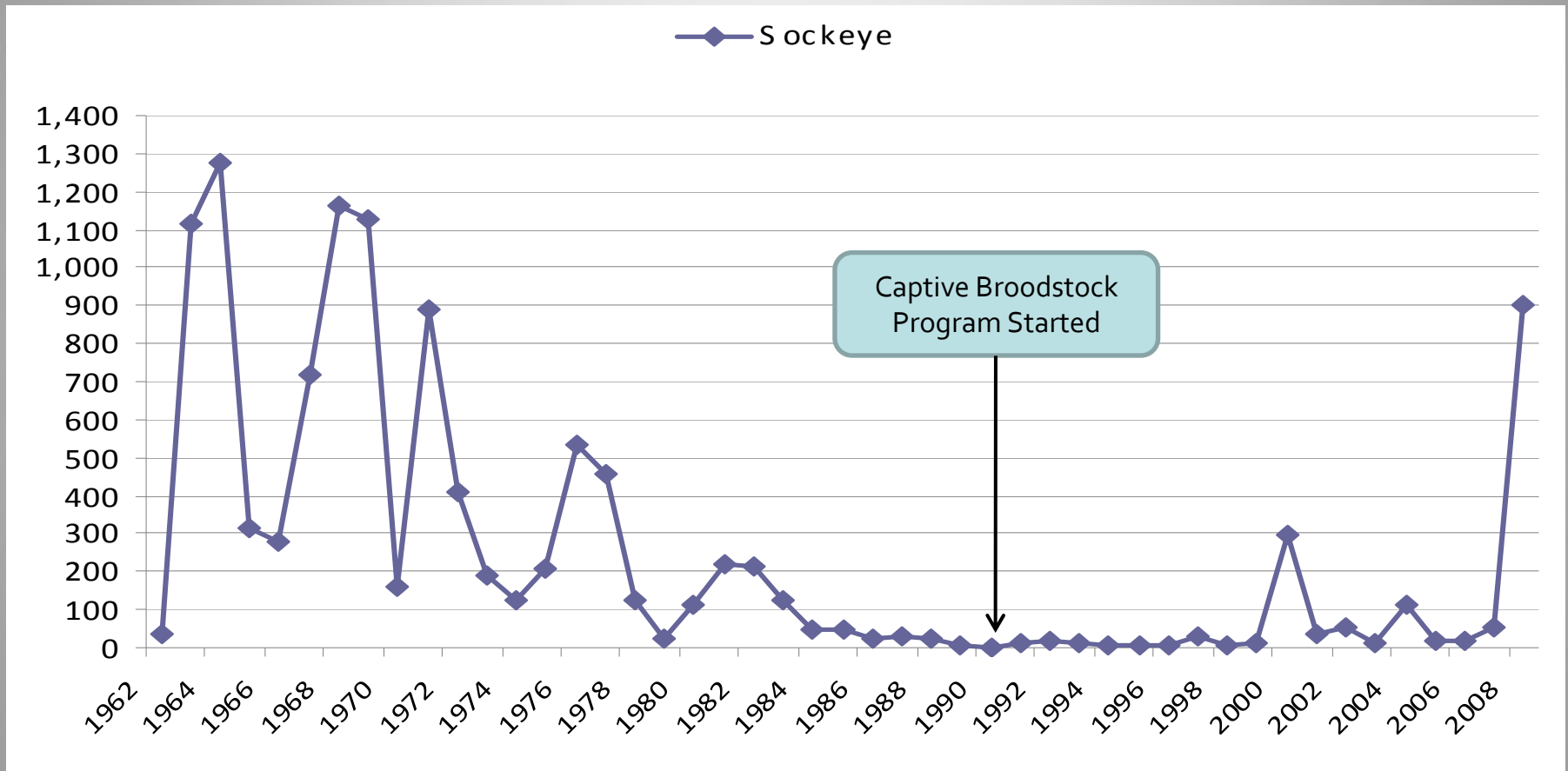


¹ Run size information adapted from the Fish Passage Center (www.fpc.org).



Total returns (jacks and adults) of sockeye salmon to the uppermost dam on the Snake River

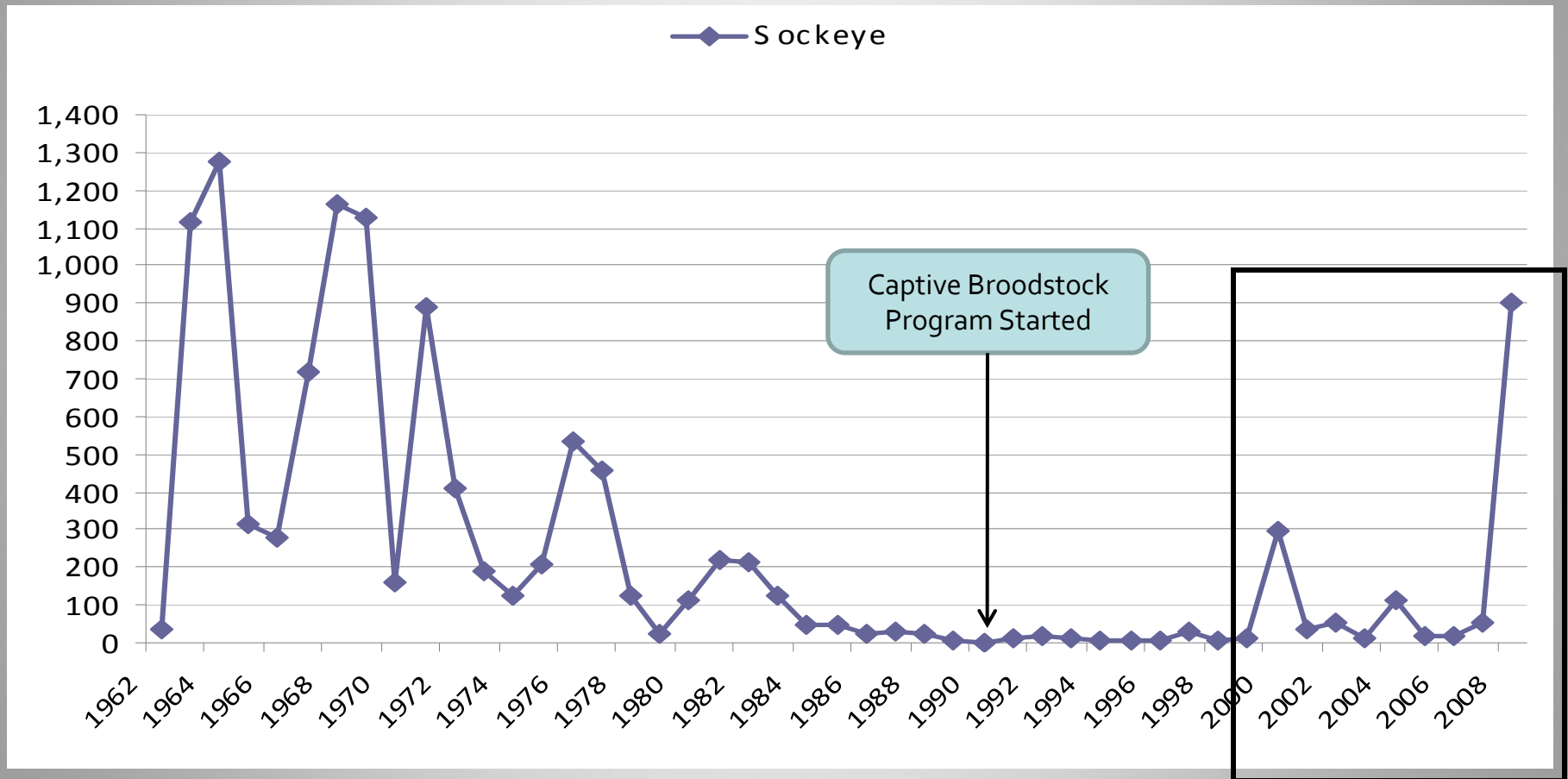
(Ice Harbor 1962 – 1968; Lower Monumental 1969; Little Goose 1970 – 1974; Lower Granite 1975 -)¹



¹ Run size information adapted from IDFG file information and from the Fish Passage Center (www.fpc.org).

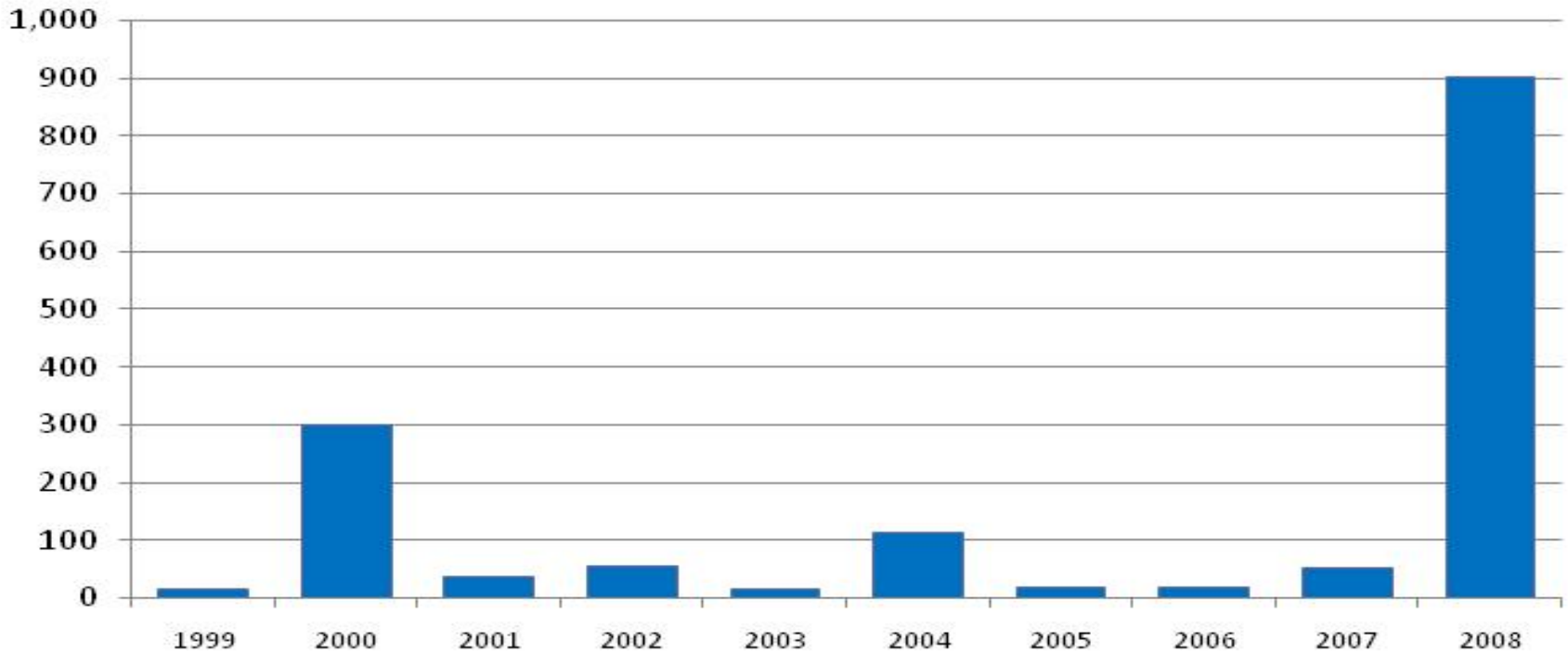
Total returns (jacks and adults) of sockeye salmon to the uppermost dam on the Snake River

(Ice Harbor 1962 – 1968; Lower Monumental 1969; Little Goose 1970 – 1974; Lower Granite 1975 -)¹



¹ Run size information adapted from IDFG file information and from the Fish Passage Center (www.fpc.org).

Total returns (jacks and adults) of sockeye salmon to Lower Granite Dam 1999 - 2008¹



	1999	2000	2001	2002	2003	2004	2005	2006	2007	2008
■ Sockeye	14	299	36	55	14	113	19	17	52	902



¹ Run size information adapted from IDFG file information and from the Fish Passage Center (www.fpc.org).

Snake River Sockeye Captive Broodstock Program – Next Steps

Support is in place in...

- Federal Columbia River Power System Biological Opinion and...
- the Columbia River Fish Accords signed by the State of Idaho and BPA



Snake River Sockeye Captive Broodstock Program – Next Steps

- Outcomes associated with this support are starting to materialize such as to the new broodstock building at the IDFG Eagle Fish Hatchery (allowing more eggs to be produced)



Snake River Sockeye Captive Broodstock Program – Next Steps

- The State is working with BPA and the NWPCC to identify and acquire suitable in-state hatchery space for an expanded smolt program
- 500,000 to 1,000,000



Snake River Sockeye Captive Broodstock Program – Next Steps

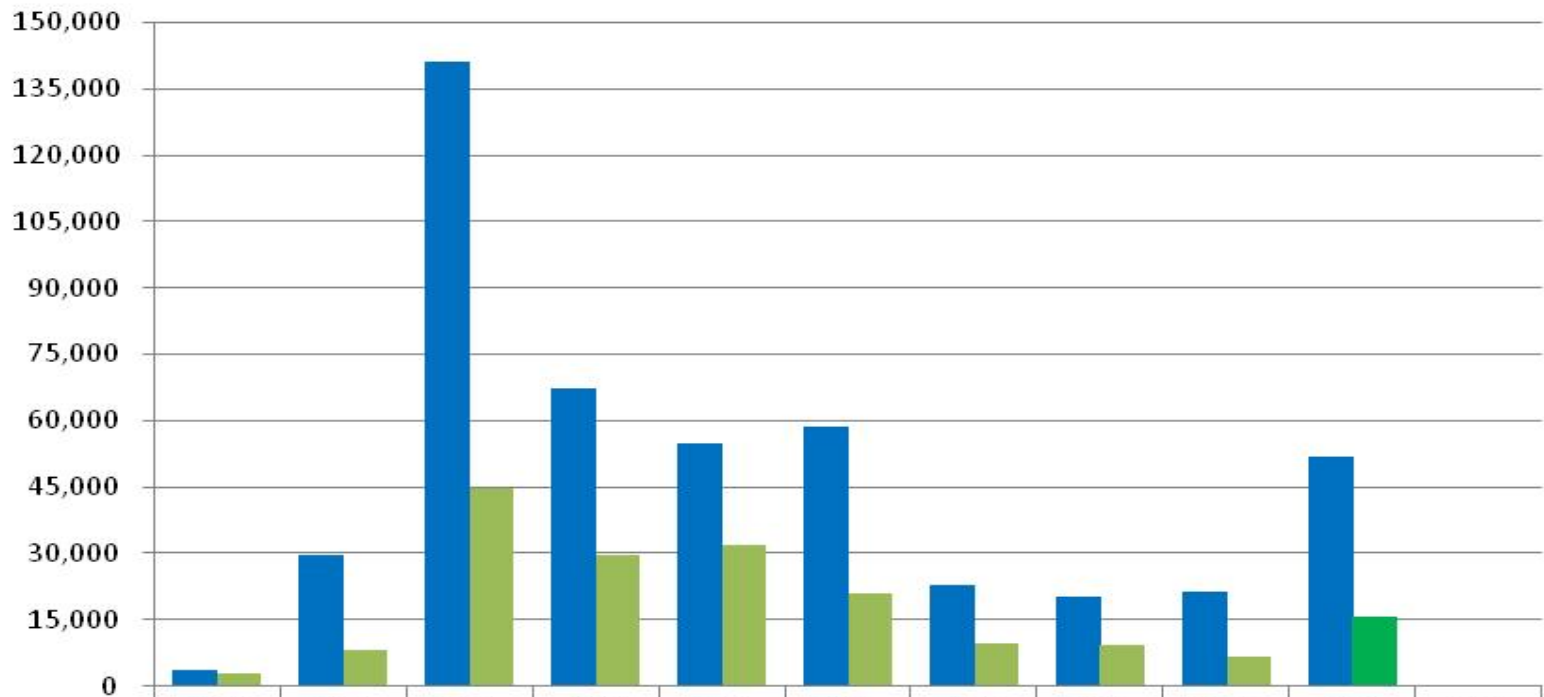
- 500,000 to 1,000,000 smolts could produce up to 5,000 sockeye salmon adults back to Idaho



Snake River Forecasts



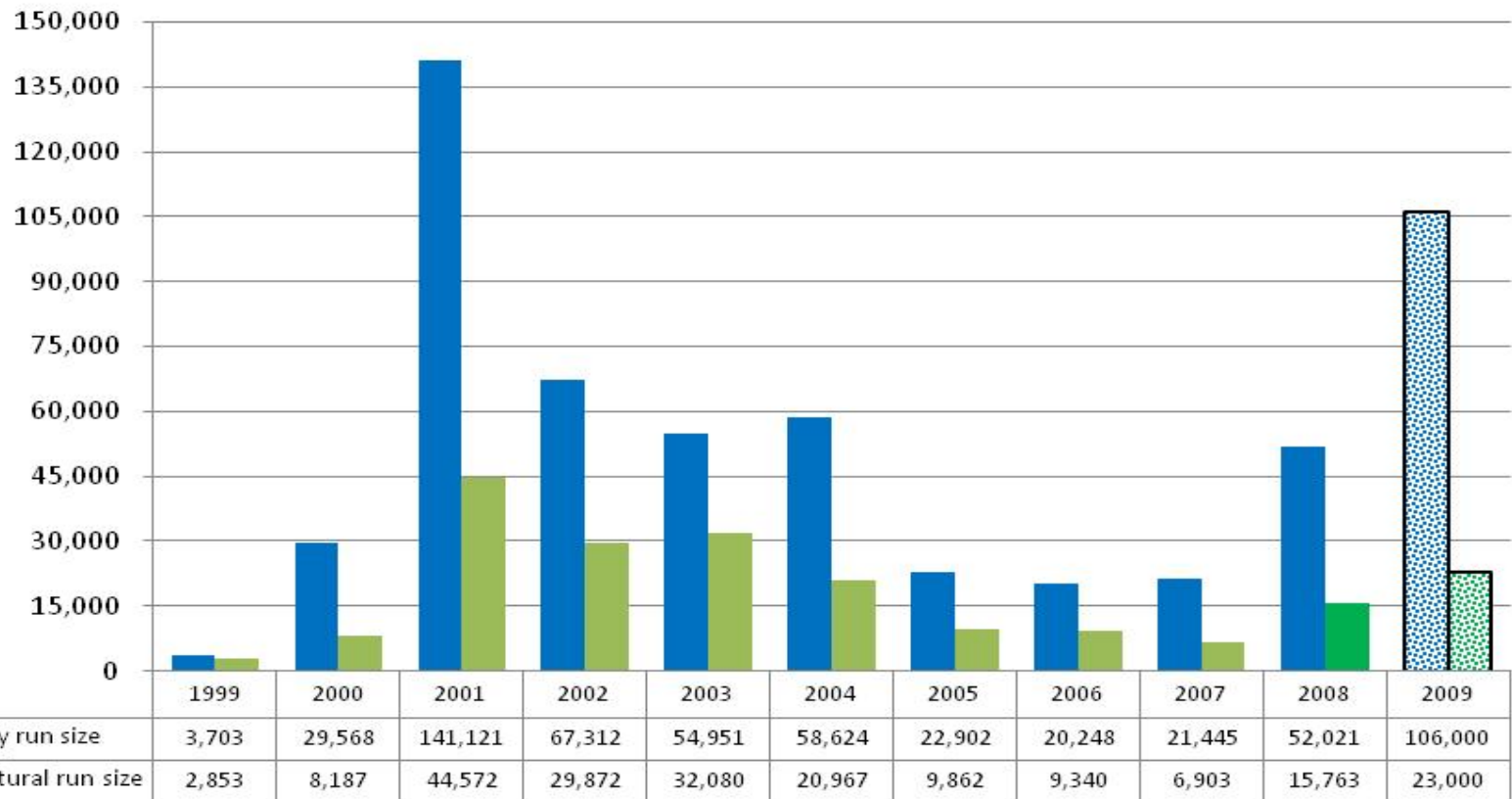
Adult returns of wild/natural- and hatchery-origin spring/summer Chinook salmon to Lower Granite Dam 1999 – 2008 with 2009 forecast information



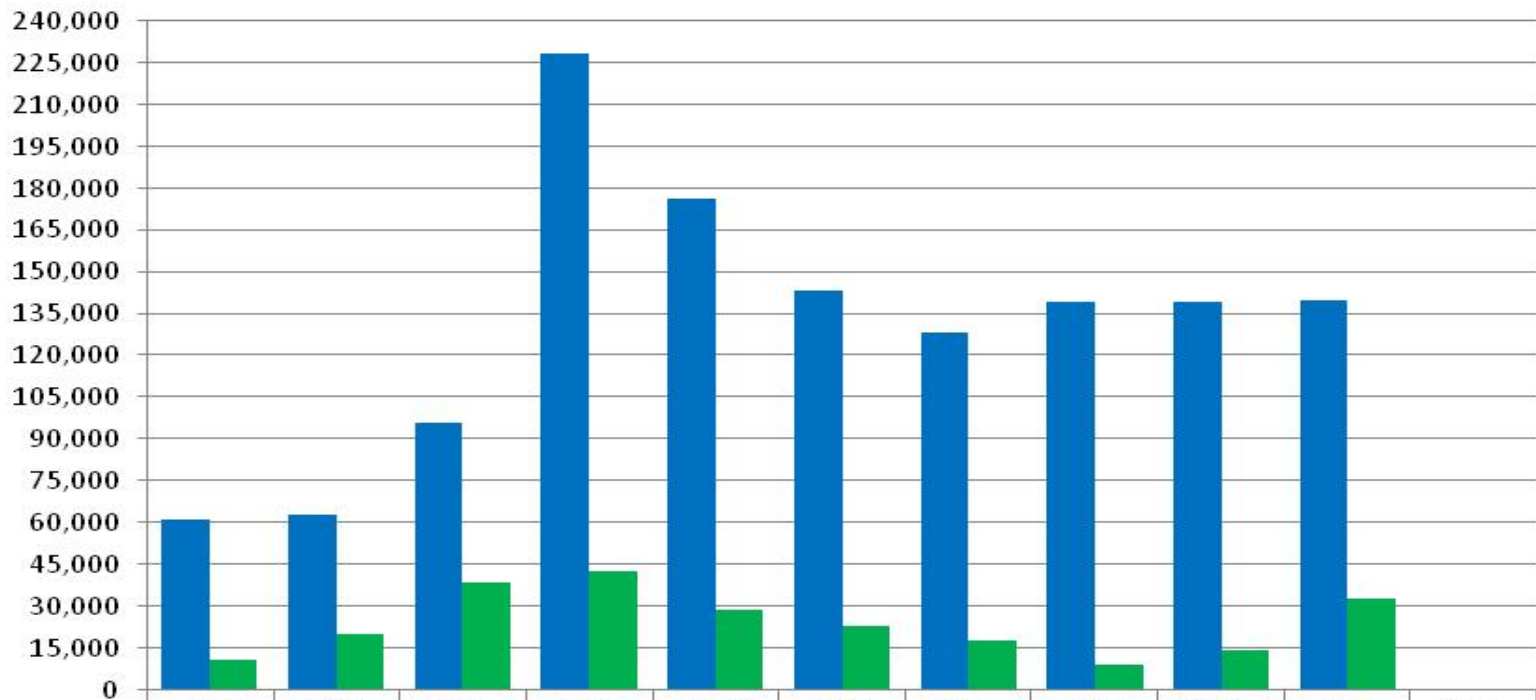
	1999	2000	2001	2002	2003	2004	2005	2006	2007	2008	2009
■ Hatchery run size	3,703	29,568	141,121	67,312	54,951	58,624	22,902	20,248	21,445	52,021	0
■ Wild/natural run size	2,853	8,187	44,572	29,872	32,080	20,967	9,862	9,340	6,903	15,763	0



Adult returns of wild/natural- and hatchery-origin spring/summer Chinook salmon to Lower Granite Dam 1999 – 2008 with 2009 forecast information



Adult returns of wild/natural- and hatchery-origin Steelhead to Lower Granite Dam 1999 – 2008 with 2009 forecast information

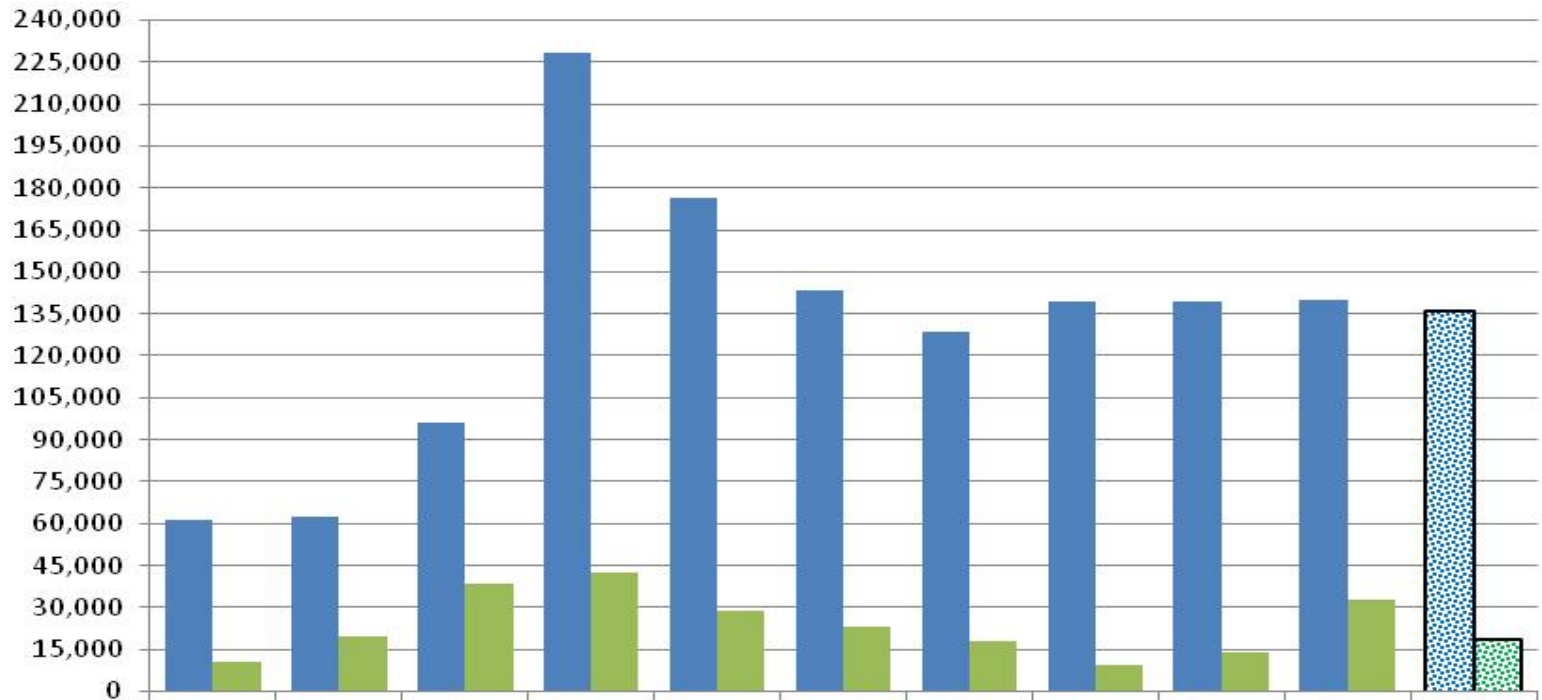


	1999	2000	2001	2002	2003	2004	2005	2006	2007	2008	2009
■ Hatchery run size	61,337	62,773	96,227	228,257	176,327	143,329	128,583	139,309	139,511	139,998	0
■ Wild/natural run size	11,038	19,978	38,842	42,931	29,158	23,051	18,197	9,470	14,402	32,904	0



Adult returns of wild/natural- and hatchery-origin Steelhead to Lower Granite Dam

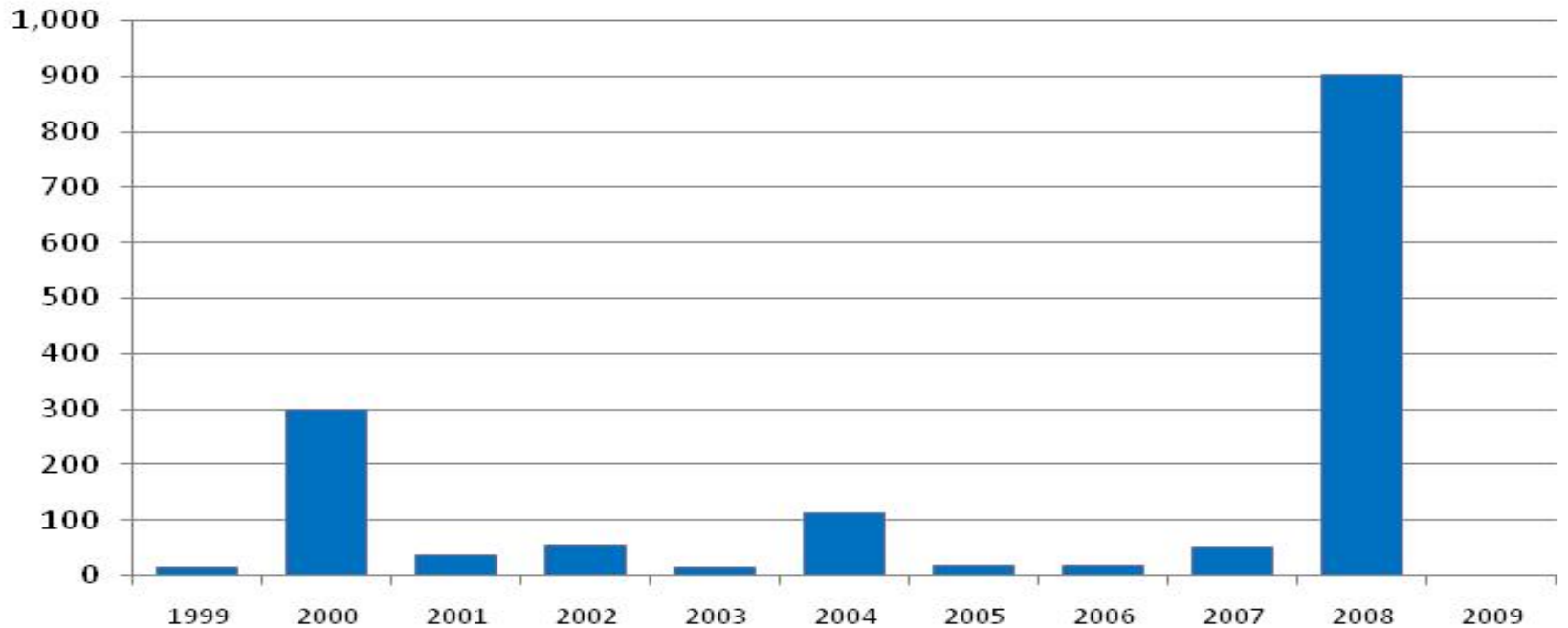
1999 – 2008 *with 2009 forecast information*



	1999	2000	2001	2002	2003	2004	2005	2006	2007	2008	2009
■ Hatchery run size	61,337	62,773	96,227	228,257	176,327	143,329	128,583	139,309	139,511	139,998	135,831
■ Wild/natural run size	11,038	19,978	38,842	42,931	29,158	23,051	18,197	9,470	14,402	32,904	18,300



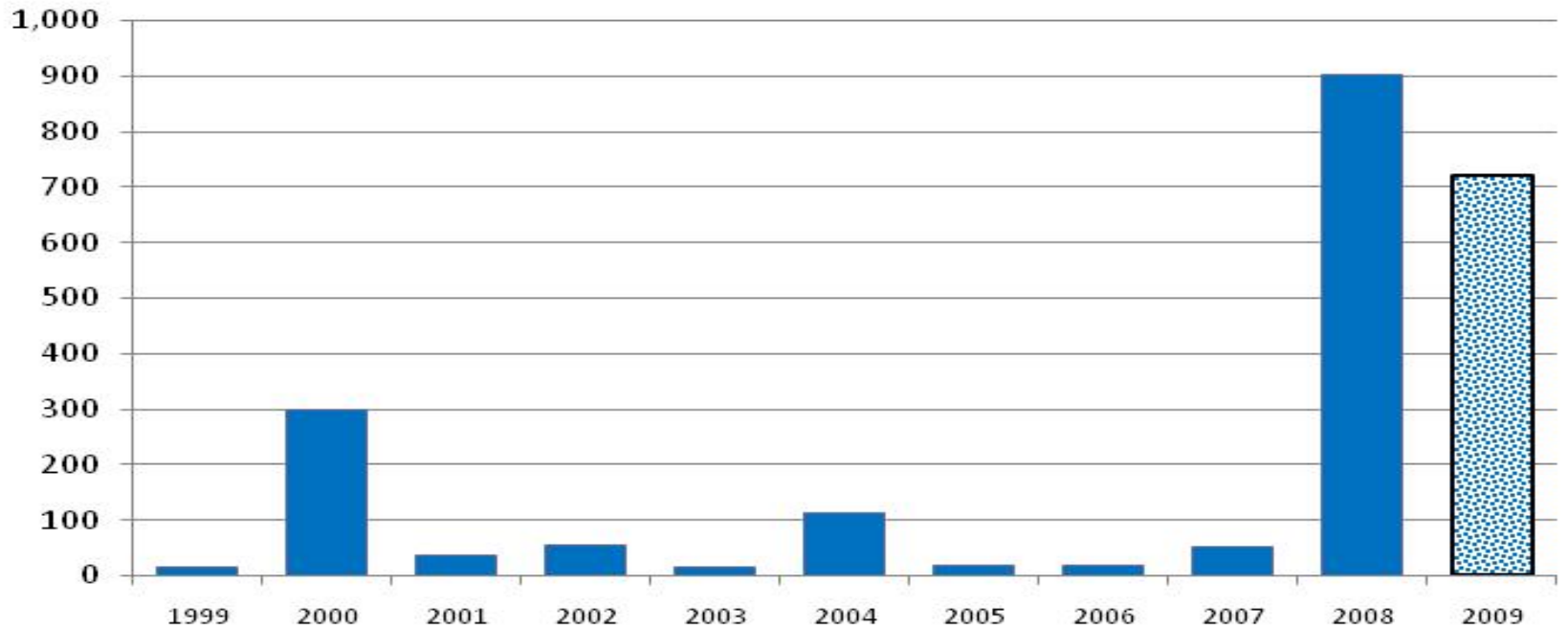
Sockeye salmon adult returns
to Lower Granite Dam 1999 – 2008
with 2009 forecast information



	1999	2000	2001	2002	2003	2004	2005	2006	2007	2008	2009
■ Sockeye	14	299	36	55	14	113	19	17	52	902	0



Sockeye salmon adult returns
to Lower Granite Dam 1999 – 2008
with 2009 forecast information



	1999	2000	2001	2002	2003	2004	2005	2006	2007	2008	2009
■ Sockeye	14	299	36	55	14	113	19	17	52	902	722



Terminal area hatchery sp/su Chinook forecasts

