

W. Bill Booth
Chair
Idaho

James A. Yost
Idaho

Tom Karier
Washington

Dick Wallace
Washington



Bruce A. Measure
Vice-Chair
Montana

Rhonda Whiting
Montana

Melinda S. Eden
Oregon

Joan M. Dukes
Oregon

July 2, 2008

MEMORANDUM

TO: Council Members

FROM: Terry Morlan

SUBJECT: Presentation on Northwestern Energy Wind Integration Experience

Integration of increasing amounts of variable wind generation into the electrical system is providing experience to help understand wind integration requirements and their costs.

Northwestern Energy, an investor owned utility providing electricity and natural gas services in Montana, South Dakota, and Nebraska, has been integrating new wind resources into their system. It provides an example of a power system facing integration challenges without large amounts of hydroelectricity or other flexible resources.

John Hines, Chief Supply Officer for Northwestern Energy, and a former Council member from Montana, along with Dave Fine, Director of Energy Supply Planning, will brief the Council on their experiences incorporating wind into Northwestern's system.



Wind Integration Discussion
Northwest Power & Conservation Council
Kalispell, Montana
July 15, 2008

Wind on NWE's System

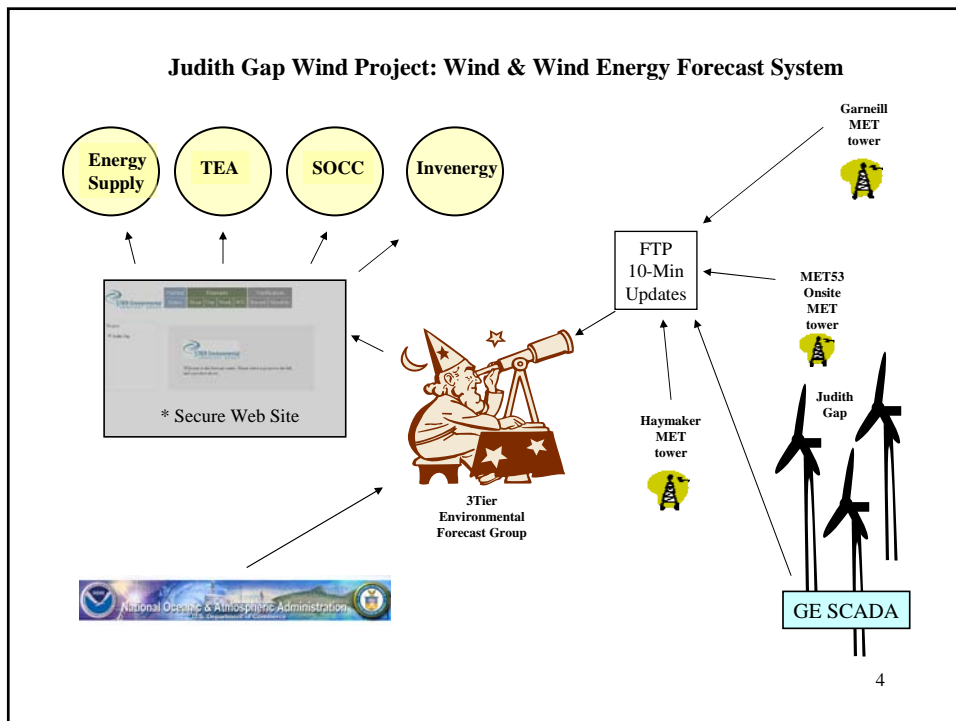
- 9 projects,
 - 149 MW
 - About 9% of NWE's Energy Requirement

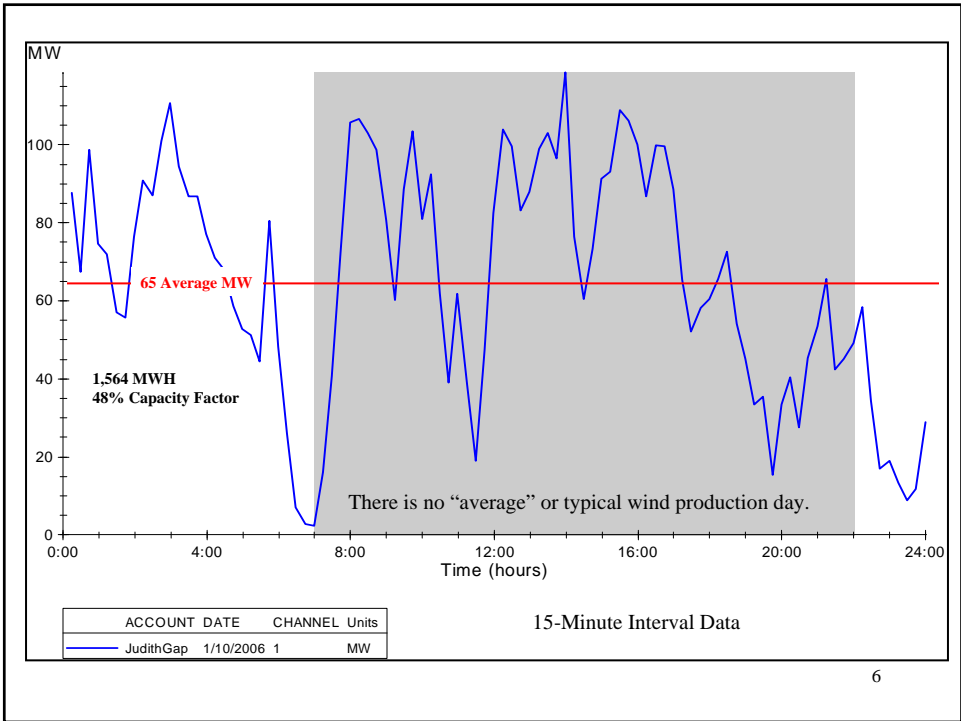
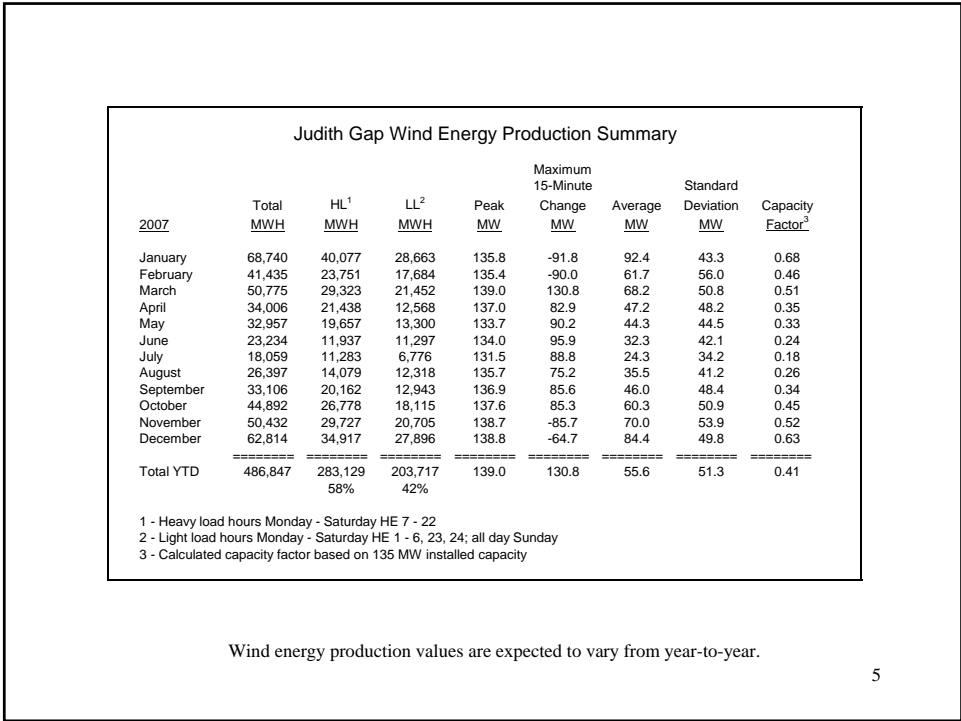
Judith Gap Overview

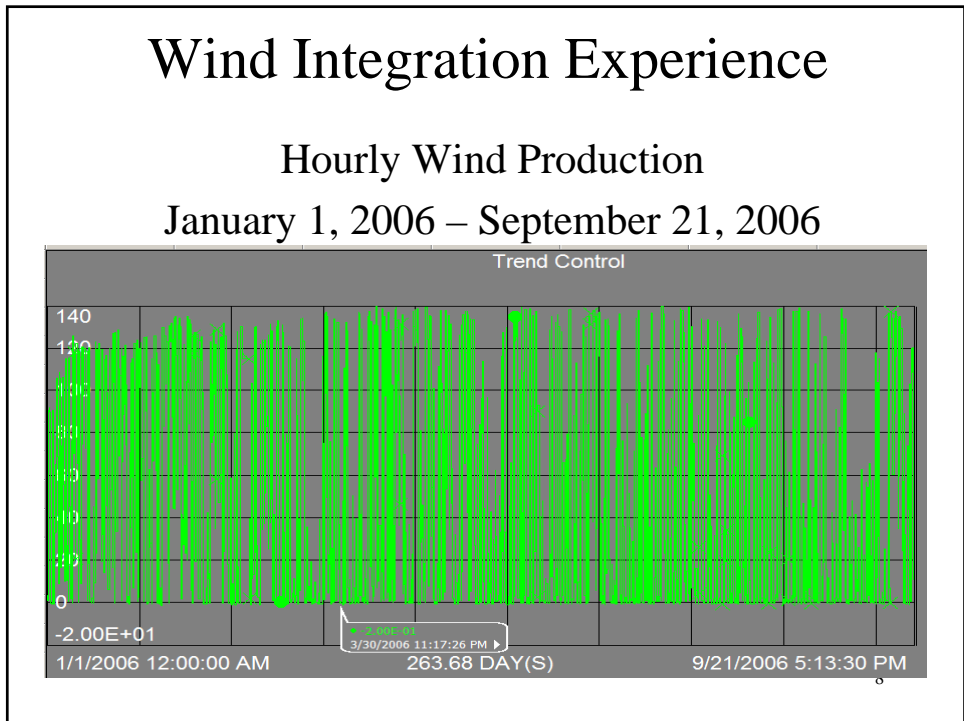
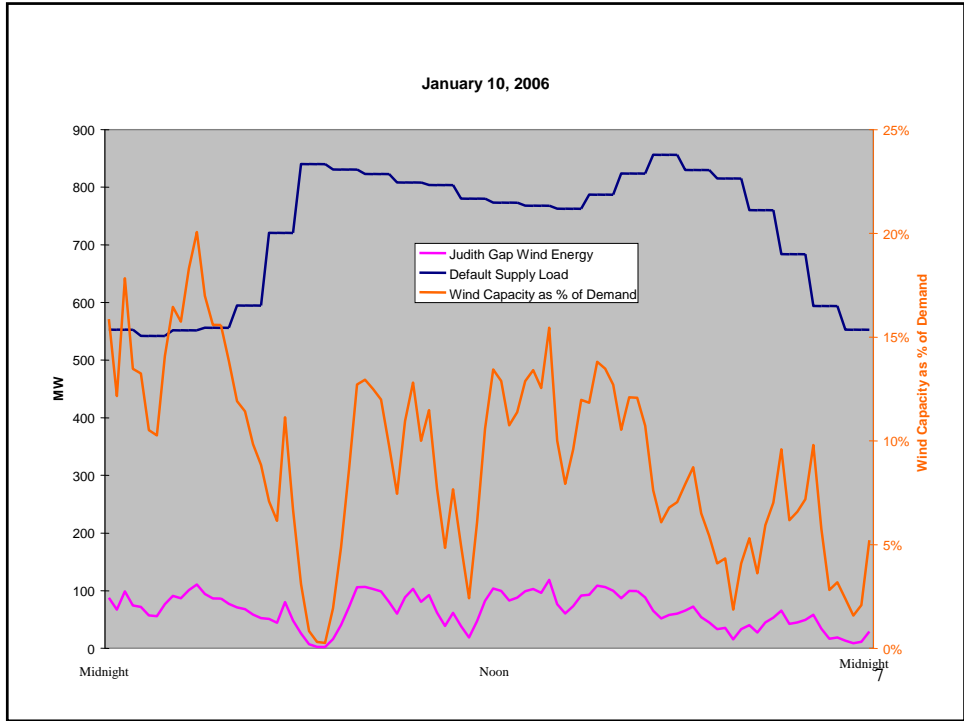
- Commercial Operation Date: February 2006
- 90 GE 1.5 MW Turbines (135 MW installed capacity)
- 20-Year Purchase Power Agreement between Invenenergy & NorthWestern Energy
- 38-40% Expected Annual Average Capacity Factor (450,000 - 475,000 MWH/yr)

Project Performance:

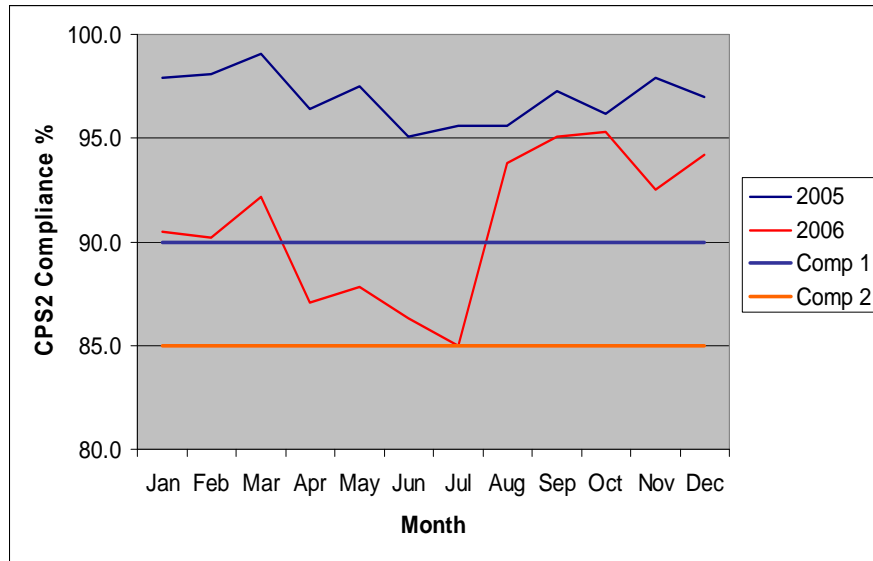
- Annual & monthly energy production and capacity factor are as expected for a “typical year”
- Wind forecasting system is operational and providing valuable data for pre-schedule and real-time activities.
- TEA (NWE realtime agent) using the 3Tier wind energy forecasts for purchase & sales decisions to balance load and resources
- NWE anticipates Judith Gap will continue to exceed >94% mechanical availabilty from the state-of-the-art facility







NWE CPS2 Compliance Data



9

Wind Integration Costs

- NWE must continually balance resources with demand.
- NWE contracts with 3rd party for Regulation Reserves
 - NWE owns no regulating resources – and hasn't since the mid-80s
- We regulate by sending a signal from our Automatic Generation Control system every 4 seconds to our regulation services providers.
 - If supply > demand we send a signal to back down generation
 - If demand > supply we send a signal to pick up generation
- Historical need for 60 MW of regulating capacity (\pm 30 MW)
 - Very illiquid market

10

What does the future hold?

Historical Regulation Requirements

- Transmission Customer Resource
 - 60 MW (\pm 30 MW)
 - Base price \$2.7 million / year
- Liquidity of the regulating reserves market
 - It is getting worse not better – Availability Issues
- NWE has issued 2 recent RFPs for Regulating Reserves
 - Verified that market is very illiquid for this product.
 - No long term proposals received, other than new-build, green-field projects
 - Prices are going up

11

Now With Wind Integration Requirements

- Supply acquiring regulation necessary for intermittent resources and makes available to the transmission operator
- Regulation Purchased at the beginning of 2006
 - 15 MW (\pm 7.5 MW): ~11% of default supply wind resource
 - Base price: \$1.1 million / year:
- Second Purchase Added in June 2006 to correct CPS2 performance
 - 10 MW (\pm 5 MW)
 - Base price: \$740,000 / year
- Total regulating reserves to support wind generation
 - 25 MW ~18% of default supply wind resource
 - Nearly \$1.8 million/year
- Costs for regulation reserves have doubled for this upcoming year

12

Looking Forward....

- Finite and possibly diminishing capability to effectively integrate intermittent resources with low capacity value
- NWE may build regulating resource
- Renewable Portfolio Standards should be based on economic or utility operational criteria - not “hard targets”
- Need Additional Analyses For Policy Makers – “Apples to Apples” Comparisons