

W. Bill Booth
Chair
Idaho

James A. Yost
Idaho

Frank L. Cassidy Jr.
"Larry"
Washington

Tom Karier
Washington



Bruce A. Measure
Vice-Chair
Montana

Rhonda Whiting
Montana

Melinda S. Eden
Oregon

Joan M. Dukes
Oregon

January 30, 2008

MEMORANDUM

TO: Fish and Wildlife Committee members

FROM: Tony Grover, Fish and Wildlife Division Director

SUBJECT: Calendar year 2008 fish and wildlife division workplan

I will discuss the Fish and Wildlife Division 2008 calendar year workplan with the committee. In particular, I will focus on how to ensure our important routine work does not suffer when workloads for all division staff spike during the spring, summer and fall due to program amendments and outside processes. We can also discuss the need to stay flexible and responsive to the timing needs of project sponsors that are working on a variety of major projects. We should also discuss strategies for managing the ISRP and ISAB workload as the project review process starts up again this spring.

<w:\tg\ww\workplan2008memo.doc>

An aerial photograph of a vast landscape. In the foreground, a large, conical mountain is covered in dense, dark green coniferous forest. The mountain's surface shows some lighter, brownish patches, possibly from erosion or fire. Beyond the mountain, a wide, light-colored river or lake winds through a valley. The valley is filled with rolling hills and more forested areas. In the distance, more mountain ranges are visible under a sky with scattered white clouds. The overall scene is a mix of natural beauty and rugged terrain.

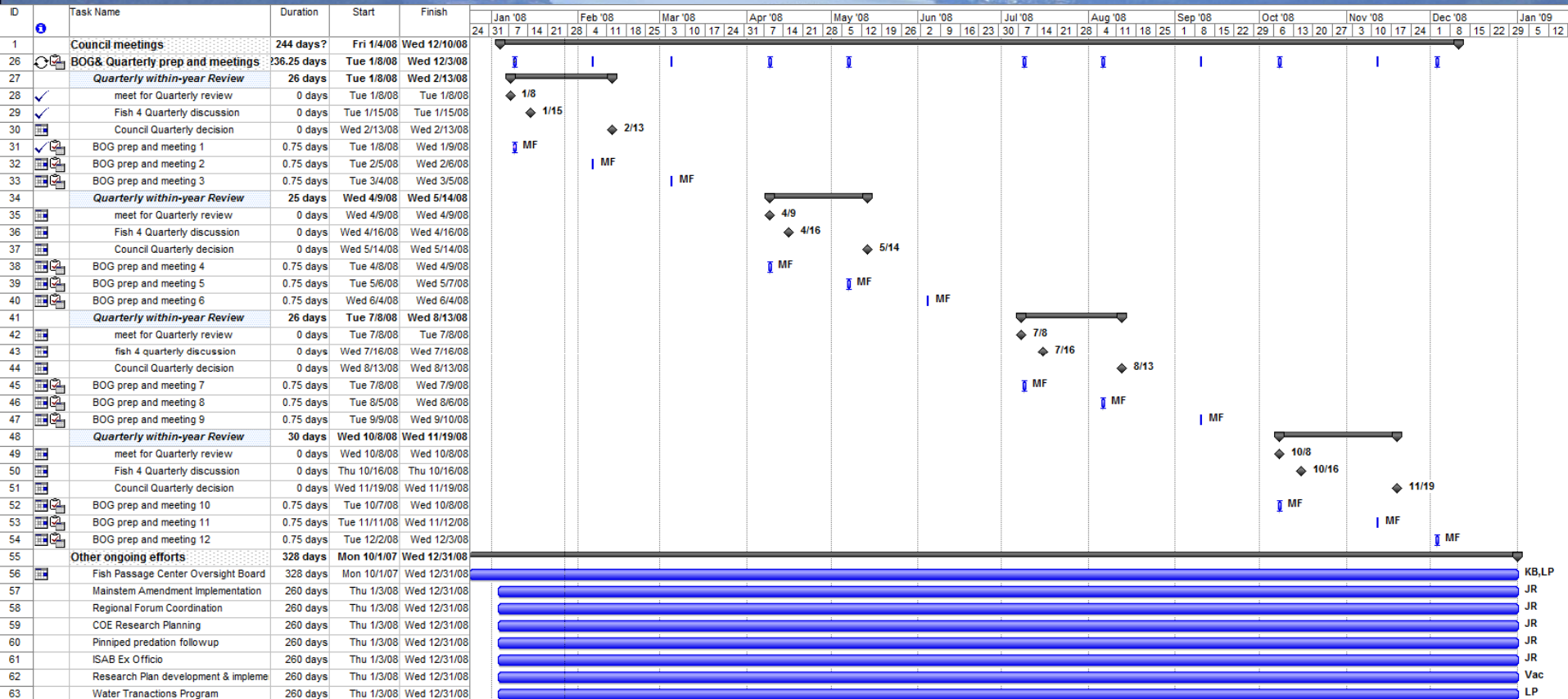
Fish and Wildlife Division Workplan Calendar Year 2008

29 January 2008

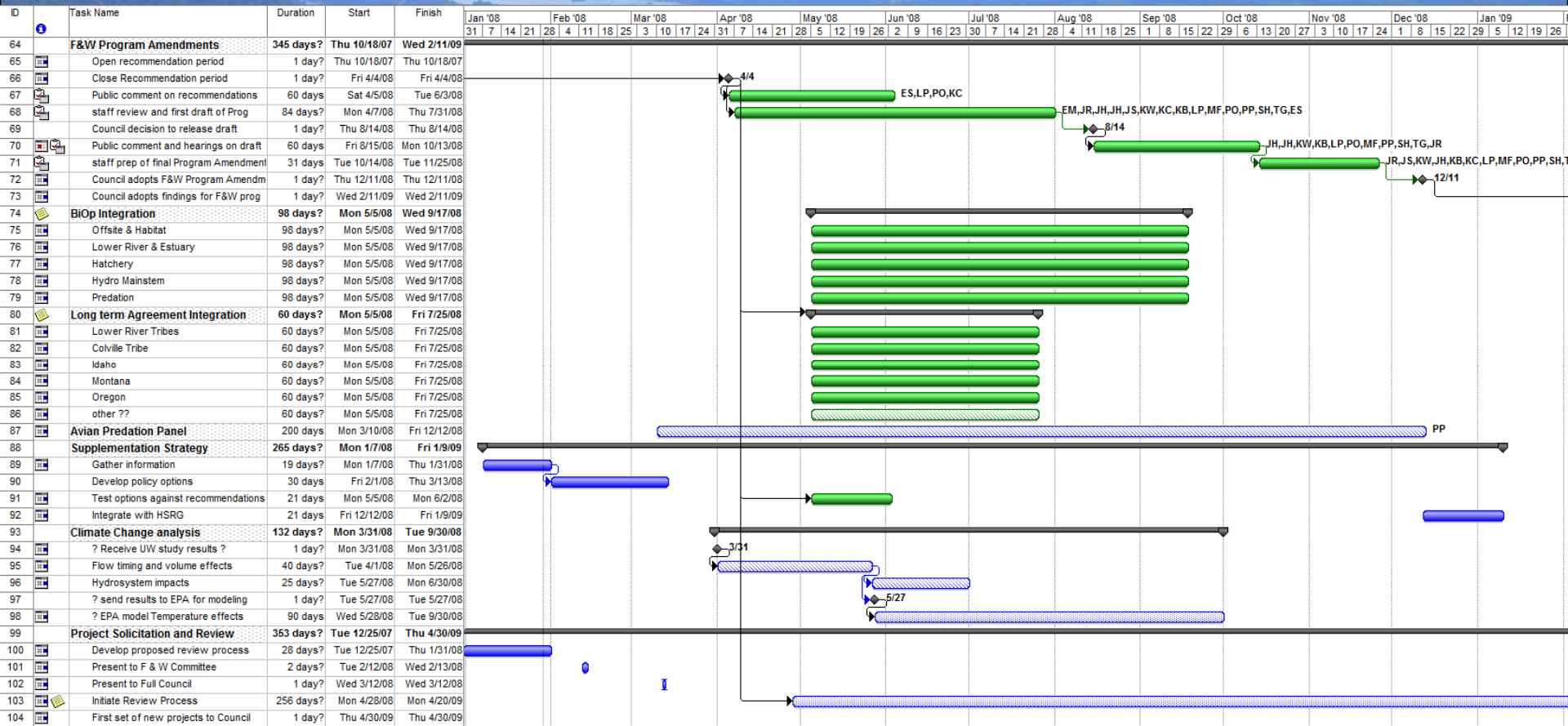
| ID | Task Name | Start | Finish | Duration | Q1 08 | | | Q2 08 | | | Q3 08 | | | Q4 08 | | | Q1 09 | | | Q2 09 | | | Q3 09 | | | Q4 09 | | | Q1 10 | | | Q2 10 | | | Q3 10 | |
|----|---------------------------------------|------------|------------|----------|-------|-----|-----|-------|-----|-----|-------|-----|-----|-------|-----|-----|-------|-----|-----|-------|-----|-----|-------|-----|-----|-------|-----|-----|-------|-----|-----|-------|-----|-----|-------|-----|
| | | | | | Jan | Feb | Mar | Apr | May | Jun | Jul | Aug | Sep | Oct | Nov | Dec | Jan | Feb | Mar | Apr | May | Jun | Jul | Aug | Sep | Oct | Nov | Dec | Jan | Feb | Mar | Apr | May | Jun | Jul | Aug |
| 1 | Council meetings | 1/4/2008 | 12/10/2008 | 244d | | | | | | | | | | | | | | | | | | | | | | | | | | | | | | | | |
| 2 | BOG& Quarterly prep and meetings | 1/8/2008 | 12/2/2008 | 236d | | | | | | | | | | | | | | | | | | | | | | | | | | | | | | | | |
| 3 | meet for Quarterly review | 1/8/2008 | 1/8/2008 | 0d | | | | | | | | | | | | | | | | | | | | | | | | | | | | | | | | |
| 4 | Fish 4 Quarterly discussion | 1/15/2008 | 1/15/2008 | 0d | | | | | | | | | | | | | | | | | | | | | | | | | | | | | | | | |
| 5 | Council Quarterly decision | 2/13/2008 | 2/13/2008 | 0d | | | | | | | | | | | | | | | | | | | | | | | | | | | | | | | | |
| 6 | meet for Quarterly review | 4/9/2008 | 4/9/2008 | 0d | | | | | | | | | | | | | | | | | | | | | | | | | | | | | | | | |
| 7 | Fish 4 Quarterly discussion | 4/16/2008 | 4/16/2008 | 0d | | | | | | | | | | | | | | | | | | | | | | | | | | | | | | | | |
| 8 | Council Quarterly decision | 5/14/2008 | 5/14/2008 | 0d | | | | | | | | | | | | | | | | | | | | | | | | | | | | | | | | |
| 9 | meet for Quarterly review | 7/8/2008 | 7/8/2008 | 0d | | | | | | | | | | | | | | | | | | | | | | | | | | | | | | | | |
| 10 | fish 4 quarterly discussion | 7/16/2008 | 7/16/2008 | 0d | | | | | | | | | | | | | | | | | | | | | | | | | | | | | | | | |
| 11 | Council Quarterly decision | 8/13/2008 | 8/13/2008 | 0d | | | | | | | | | | | | | | | | | | | | | | | | | | | | | | | | |
| 12 | meet for Quarterly review | 10/8/2008 | 10/8/2008 | 0d | | | | | | | | | | | | | | | | | | | | | | | | | | | | | | | | |
| 13 | Fish 4 Quarterly discussion | 10/16/2008 | 10/16/2008 | 0d | | | | | | | | | | | | | | | | | | | | | | | | | | | | | | | | |
| 14 | Council Quarterly decision | 11/19/2008 | 11/19/2008 | 0d | | | | | | | | | | | | | | | | | | | | | | | | | | | | | | | | |
| 15 | Other ongoing efforts | 10/1/2007 | 12/31/2008 | 328d | | | | | | | | | | | | | | | | | | | | | | | | | | | | | | | | |
| 16 | F&W Program Amendments | 10/18/2007 | 2/11/2009 | 345d | | | | | | | | | | | | | | | | | | | | | | | | | | | | | | | | |
| 17 | Open recommendation period | 10/18/2007 | 10/18/2007 | 0d | | | | | | | | | | | | | | | | | | | | | | | | | | | | | | | | |
| 18 | Close Recommendation period | 4/4/2008 | 4/4/2008 | 0d | | | | | | | | | | | | | | | | | | | | | | | | | | | | | | | | |
| 19 | Council decision to release draft | 8/14/2008 | 8/14/2008 | 0d | | | | | | | | | | | | | | | | | | | | | | | | | | | | | | | | |
| 20 | Council adopts F&W Program Amendments | 1/12/2009 | 1/12/2009 | 0d | | | | | | | | | | | | | | | | | | | | | | | | | | | | | | | | |
| 21 | Council adopts findings for F&W prog | 2/11/2009 | 2/11/2009 | 0d | | | | | | | | | | | | | | | | | | | | | | | | | | | | | | | | |
| 22 | BiOp Integration | 5/5/2008 | 9/17/2008 | 98d | | | | | | | | | | | | | | | | | | | | | | | | | | | | | | | | |
| 23 | Long term Agreement Integration | 5/5/2008 | 7/25/2008 | 60d | | | | | | | | | | | | | | | | | | | | | | | | | | | | | | | | |
| 24 | Avian Predation Panel | 3/10/2008 | 7/25/2008 | 100d | | | | | | | | | | | | | | | | | | | | | | | | | | | | | | | | |
| 25 | Supplementation Strategy | 1/7/2008 | 1/9/2009 | 265d | | | | | | | | | | | | | | | | | | | | | | | | | | | | | | | | |
| 26 | Climate Change analysis | 1/7/2008 | 7/25/2008 | 145d | | | | | | | | | | | | | | | | | | | | | | | | | | | | | | | | |
| 27 | Project Solicitation and Review | 1/3/2008 | 8/2/2010 | 673d | | | | | | | | | | | | | | | | | | | | | | | | | | | | | | | | |
| 28 | M&E Annual Report | 12/27/2007 | 10/2/2008 | 201d | | | | | | | | | | | | | | | | | | | | | | | | | | | | | | | | |
| 29 | Data Management | 1/15/2008 | 2/13/2008 | 22d | | | | | | | | | | | | | | | | | | | | | | | | | | | | | | | | |
| 30 | Coordination | 12/31/2007 | 3/5/2009 | 309d | | | | | | | | | | | | | | | | | | | | | | | | | | | | | | | | |
| 31 | HSRG tracking and Integration | 12/18/2007 | 12/11/2008 | 258d | | | | | | | | | | | | | | | | | | | | | | | | | | | | | | | | |
| 32 | Council adopts/Rec HSRG to Region | 12/11/2008 | 12/11/2008 | 0d | | | | | | | | | | | | | | | | | | | | | | | | | | | | | | | | |
| 33 | Science Review | 12/18/2007 | 8/27/2010 | 704d | | | | | | | | | | | | | | | | | | | | | | | | | | | | | | | | |

Routine and Ongoing Work Elements

Council meetings, BOG and other tasks

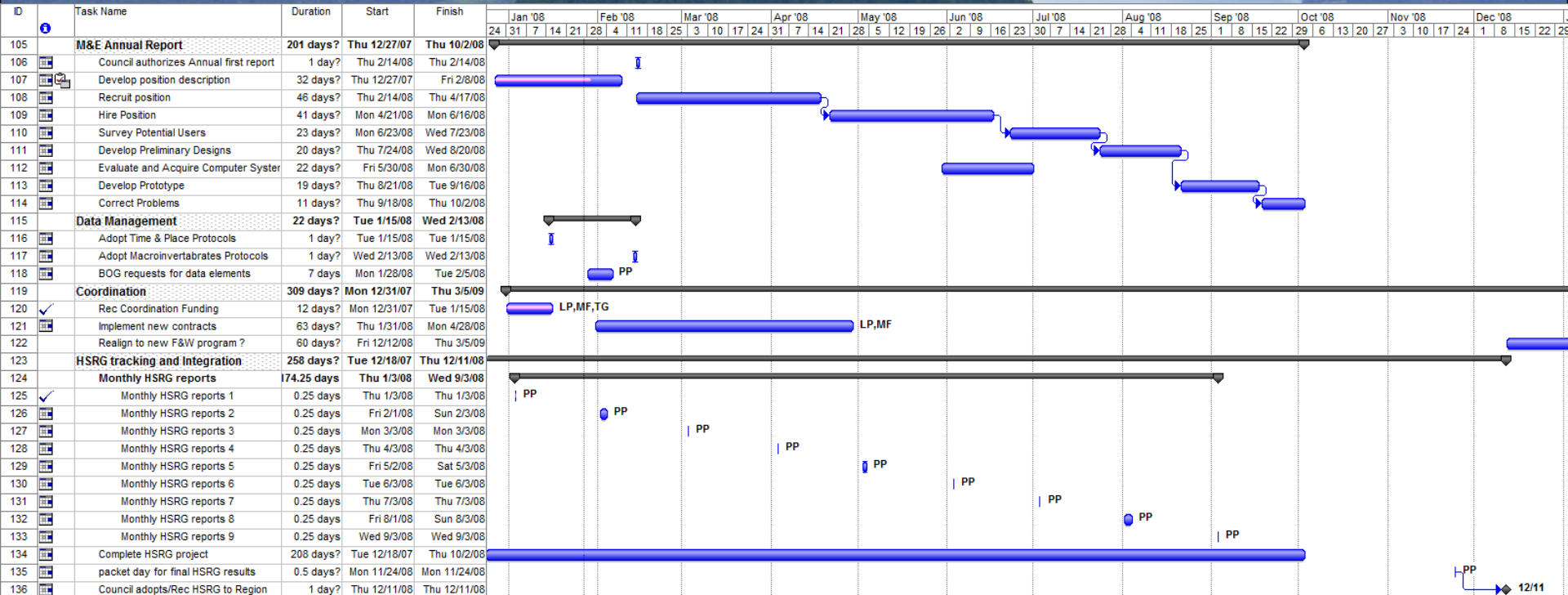


Significant Non-repeating Work Program Amendments, BiOp(s) and LTA Integration, Project Review and other



Significant Other Work

M&E Annual report, Data management, HSRG and Coordination



Science Review

ISAB, ISRP, Follow-up Actions, and Major Project reviews

